



Small Mesh Groundfish (Whiting) Amendment 17

Progress report
Documents 1 and 3



Issues

1. ACLs/AMs
2. Limited access
3. Catch allocation and ACL monitoring
4. Bycatch/Research priorities

Scoping hearings

- Already held in 2006
- Same issues –relevant scoping comments
- Renumbering amendment

Timeline

- PDT estimates catch and updates assessment – Oct 2009
- PDT recommends interim ACL and ACL specification framework – Oct/Nov 2009
- SSC reviews and approves interim ACL – December 2009
- Oversight Committee and Advisors develops management alternatives – Sept to Jan 2010
- Council approves draft alternatives for analysis in DEIS – Jan 2010
- DEIS approval – April 2010
- Public hearings – May 2010
- Council chooses final alternatives – June 2010
- Submit FEIS – July 2010

Meetings and issues

PDT

- Aug 20
- Sep 10
- Update assessment and status determination
- ABC recommendations
- Data management and analysis for DEIS
- Limited access diagnostics

Oversight Committee and Advisors

- Sept 14
- Prioritize issues to be addressed
- Delegate work and provide guidance to PDT and Advisors

ACLs/AMs

- Top priority
- Not overfished, overfishing not occurring, PRELIMINARY
- ACLs/AMs need to be in place by May 2011
- DPWS scheduled for Dec 2010
 - MSY based reference points
 - ABC/ACLs based on MSY
- Survey based assessment – uses fall survey
 - Catch time series problems (being addressed by PDT)
 - Albatross/Bigelow calibration (unknown outcome; probably addressed by DPWS)
- Catch
 - Stock area allocations (being addressed by PDT)
 - Red/white hake species uncertainty (being addressed by PDT)
 - No discard estimates (being addressed by PDT)

ACLs/AMs

- Interim limits based on some historic catch level, (e.g. monkfish), or exploitation rate (e.g. skates)
- Specification framework/control rule that sets ABCs and ACLs using MSY based reference points developed by DPWS
- Accounting for management uncertainty ($ACL < ABC$; or $ACT < ACL \sim ABC$)
- Use of indicators to adjust ACLs (informal assessment approaches)
- 2012 specification (year 1), followed by 3 year cycle

ABC – recommended to the SSC with supporting analysis and rationale

- Discards fraction of catch cannot be ignored
- Historic exploitation ratios
 - 1972-1983
 - Observed biomass change
 - Other?
- Historic catch
 - Recent?
 - Other?

Update assessment

- Index based assessment
- Status determination reference points 1972-1983
- Corrections to biomass delta mean indices
 - Affected by zero tows which were overestimated < 1992 when scales measured to 0.1 kg
 - Will affect reference point values

Update assessment

- Landings allocated to stock using GARM methods
- Discards estimated using SBRM methods (D/K_{all})
- Overfishing status determination with catch and landings only

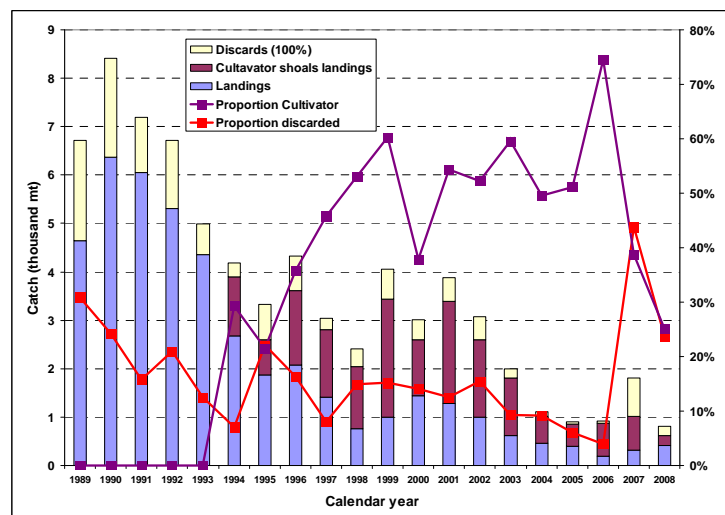
Special commercial data issues

- Species discrimination – red hake v. small white hake
- Offshore hake – proportion of commercial catch offshore of survey strata
- Unreported landings – transfers at sea for bait
- Commercial discard estimated via SBRM methods – hindcast before sea sampling occurred
- Recreational catch

Catch trends

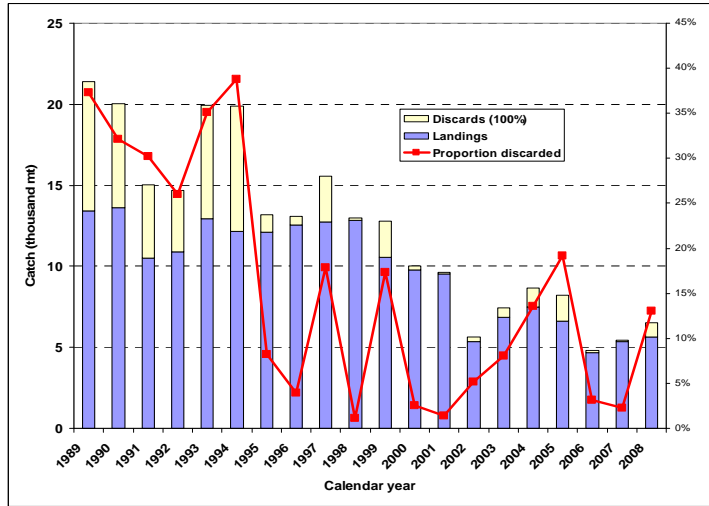
Preliminary estimates

Northern silver hake



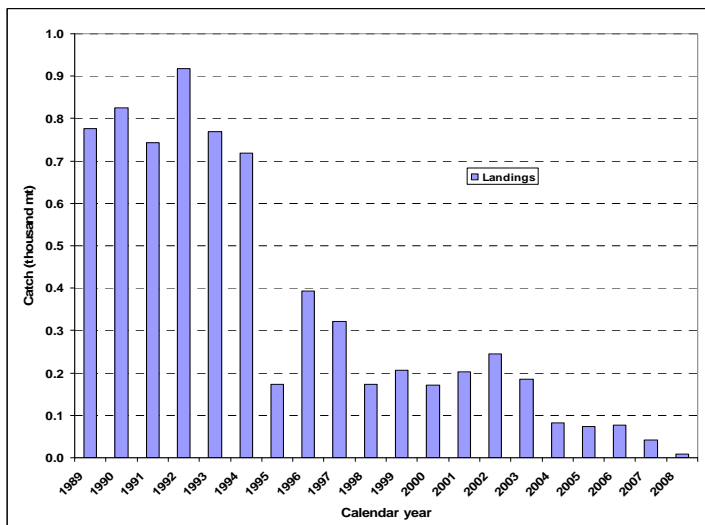
Catch trends

Preliminary estimates
Southern silver hake



Catch trends

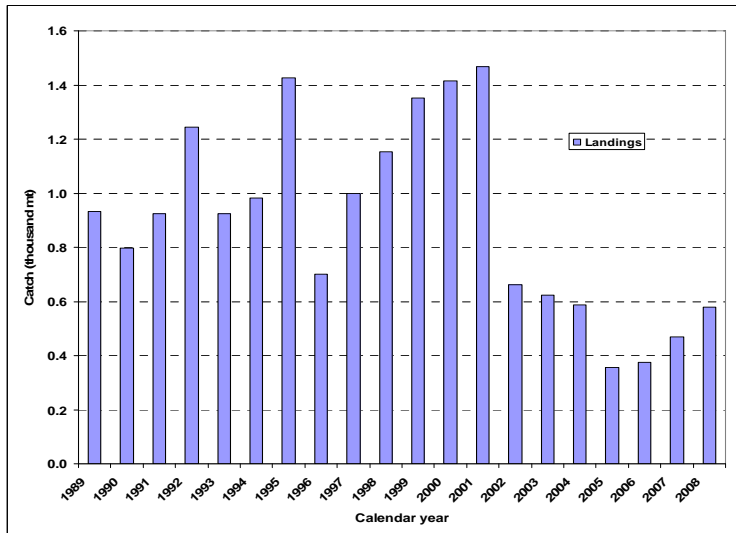
Preliminary estimates
Northern red hake



Catch trends

Preliminary estimates

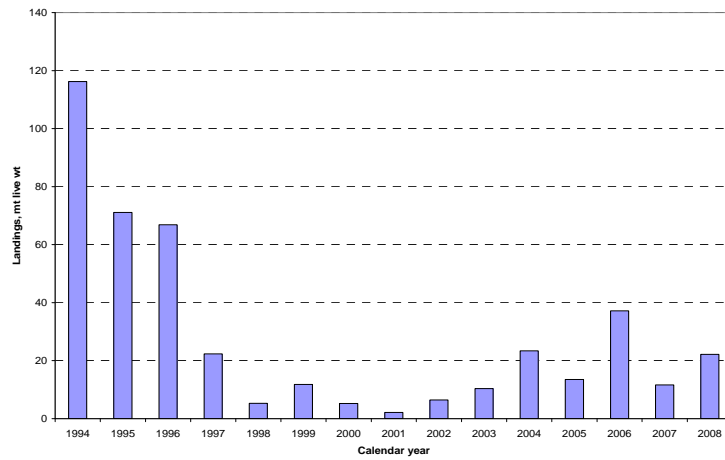
Southern red hake



Catch trends

Preliminary estimates

Offshore hake



Accountability measure alternatives

- In-season
 - Prevent catch from exceeding ACL

- Reactive
 - Reduce ACL in future years
 - Reduce quotas or allocations to reduce risk of exceeding future ACLs

Limited access baseline

- Control date March 2003
- Landings time series issues (catch sold as bait and reported on VTR)
- Some fishermen favor consideration of very old landings, pre 1994
- Many favor 1994-2003
- Recent history?
- Letter of Authorizations to fish in exempted areas

Limited access qualification

Oversight Committee to delegate issue to Advisors

- Qualifying landings criteria during base period (thresholds)
 - Before control date
 - After control date
 - Straddling control date
- Diagnostics
 - Currently active vessels
 - Current income derived from whiting landings
 - Directed and Whiting Letter of Authorization trips
- History
 - Open access but may be attached to a limited access permit
 - Transfer to new vessel if associated with a limited access permit
 - Remains with old vessel if there are no limited access permits, unless specified in a bill of sale

Limited access qualification

Baseline data

- Dealer data
 - Complete reported landings; no transferred at sea
 - Area fished often unknown
 - Annual revenue by vessels landing whiting
 - Net income from whiting landings
 - Number of dealers landing whiting and total revenue
- VTR
 - Qtykept includes transfers at sea (???)
 - Generally greater than dealer reported landings
 - Area fished reported by fishermen, but may disagree with lat/long reported by fishermen
- Area allocation tables
 - Area fished estimated by allocation algorithm
 - Allows qualification criteria by management area to respond to regional differences and stock productivity

Catch allocation and monitoring

- Limited access and seasonal quotas
 - Landings limit for non-qualifiers?
 - Landings limit for seasonal closures (AMs)?

Catch share alternatives

- Council sector policy (plug in)
 - Common pool rules?
- ITQs (aka LAPPs) (existing template)
 - No common pool needed
 - No incidental possession limits needed

Bycatch

- Minimize whiting bycatch in fisheries targeting other species (identification of 'hotspots')
- Minimize bycatch of other species in whiting fisheries (are exemptions working?)
- May guide future research priorities

Outline of potential alternatives

- ACL
 - Interim ABCs
 - ACL framework
 - Specification process
- AMs
 - In-season
 - Reactive
- Catch monitoring, allocation, and control
 - Seasonal fleet quotas
 - Sectors
 - ITQ
 - Electronic monitoring/reporting
 - Sea sampling frequency
- Limited access qualification
 - 3 alternatives
- Bycatch
 - Review
 - Research priorities