



## Brief Overview

- SDCs, Rebuilding, Annual Catch Limits
  - Changes to reference points
  - Changes to sub-ACLs
  - New ABCs/ACLs
- Commercial and Recreational Measures
  - Changes to accountability measures
  - Monitoring system changes
  - GB yellowtail flounder measures
  - Sector access to year-round closed areas

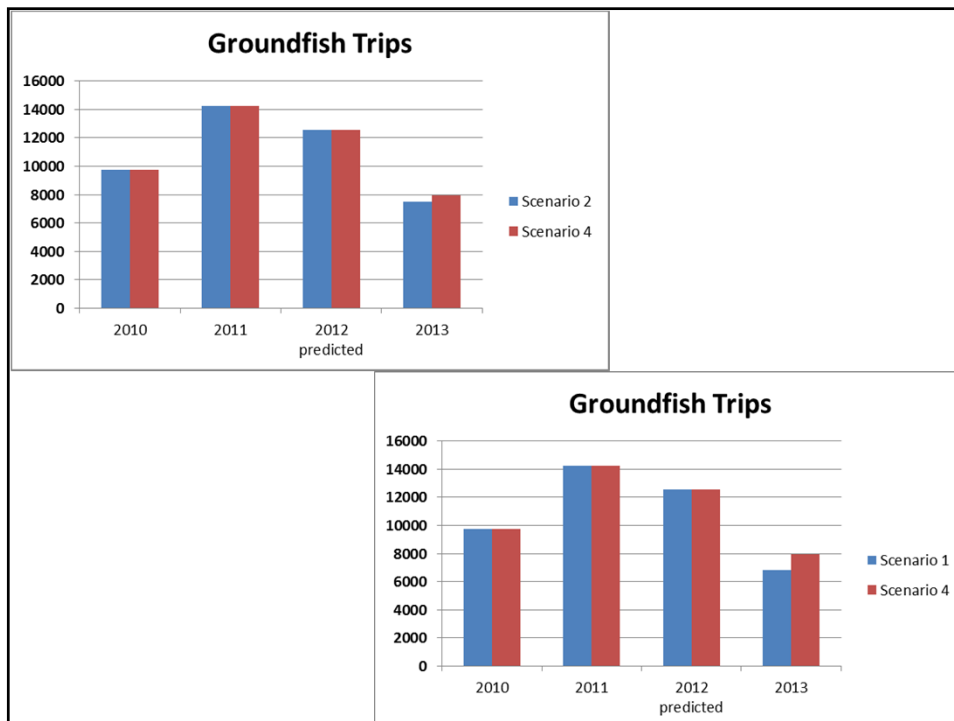
## Overview of Impacts

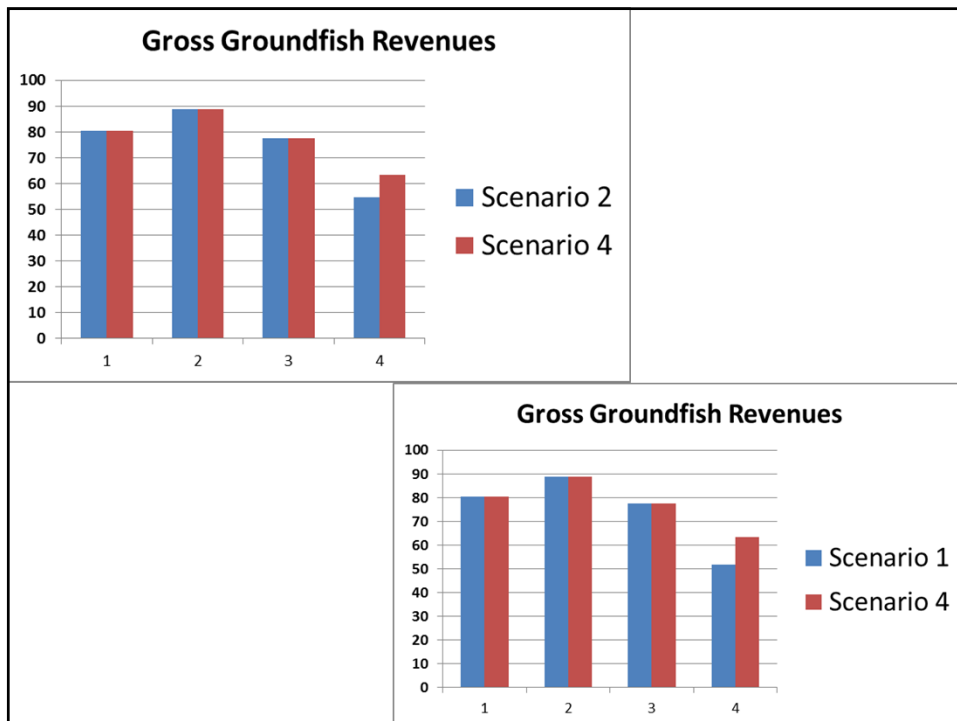
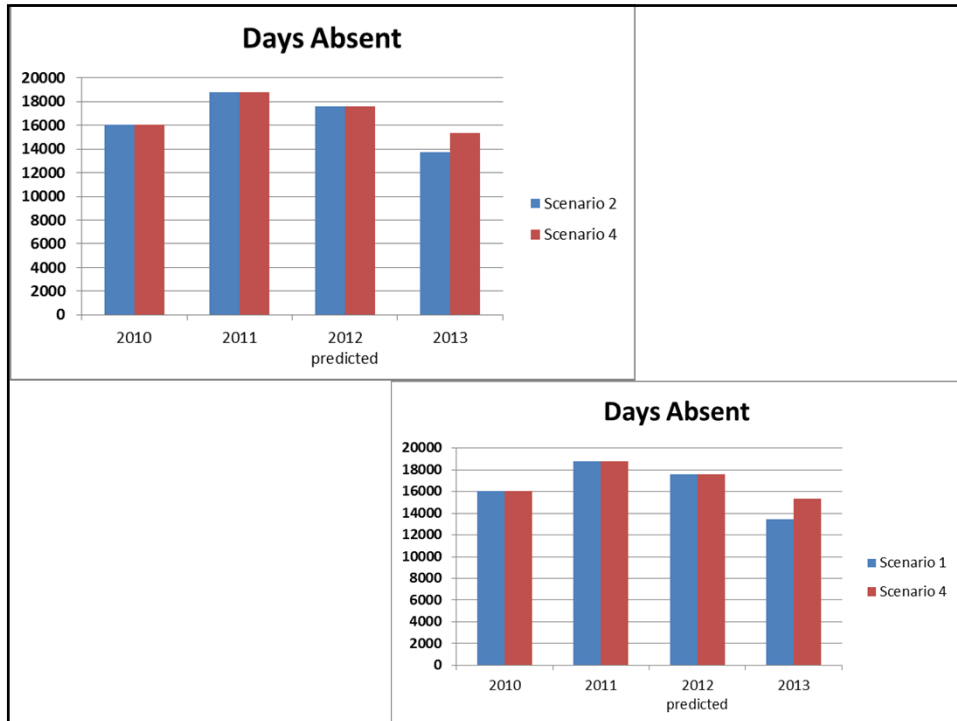
- Most impact analyses completed
- Most impacts on groundfish fishery are due to two measures:
  - Revised ABCs/ACLs
  - Possible closed area access

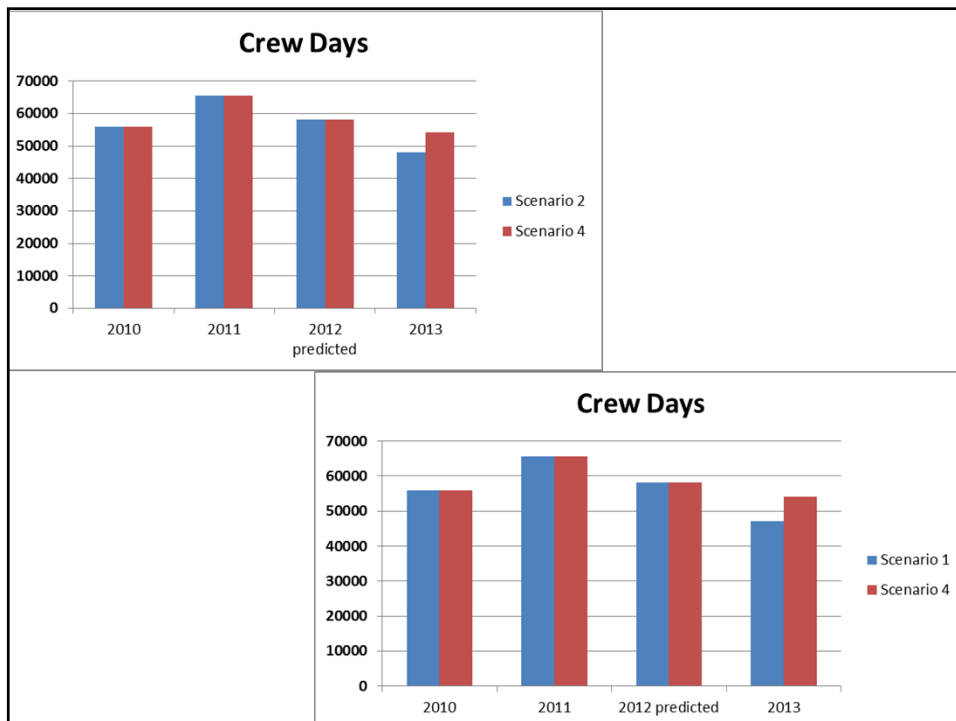
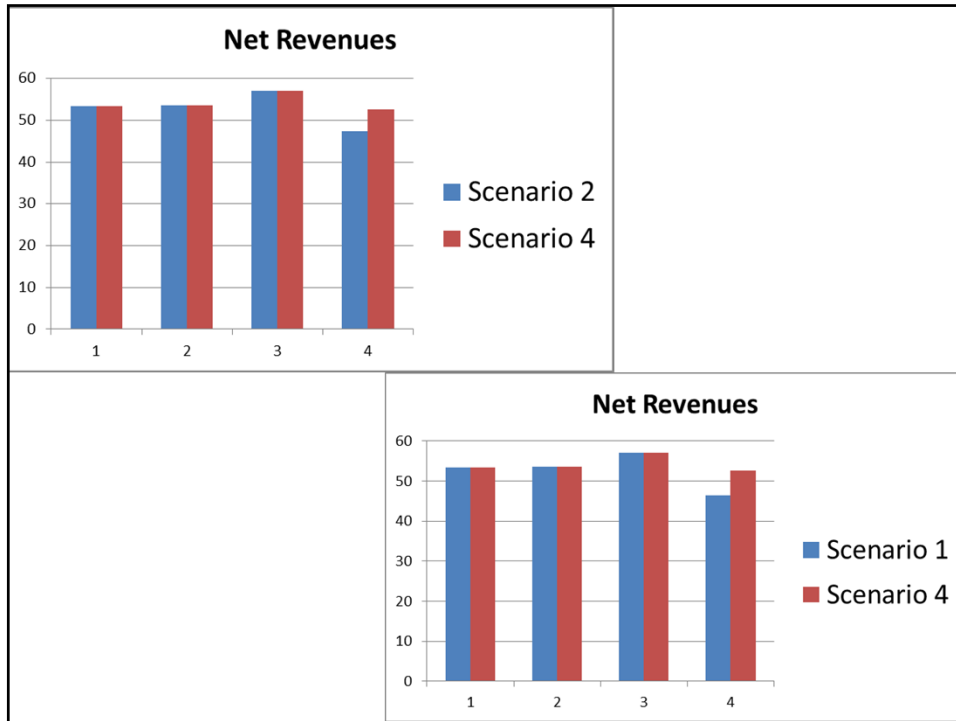
Stock	Cod-Low Change from 2011 Catch	Cod-High Change from 2011 catch	Stock	Cod-Low Change from 2011 Catch	Cod-High Change from 2011 catch
GB Cod	-68%	9%	GB Haddock	582%	582%
GOM Cod	-79%	-70%	SNE Yellowtail Flounder	25%	25%
GOM Haddock	-46%	-46%	GB Winter Flounder	82%	82%
GB Yellowtail Flounder	-74%	-74%	GOM Winter Flounder	336%	336%
CC/GOM Yellowtail Flounder	-30%	-30%	Redfish	273%	273%
American Plaice	4%	4%	White Hake	10%	10%
Witch Flounder	-27%	-27%	Pollock	70%	70%
SNE Winter Flounder					

## Revised ABCs/ACLs

- Biological: designed to meet mortality targets
- Economic: Quota change model (QCM) developed to predict future net revenues
  - Probably under-estimates future revenue
  - Anything is better than No Action
  - *Impacts largely driven by GOM and GB cod quotas, which are not yet known*
- Social: tied to economic impacts







Questions?

