

Science, Service, Stewardship



Marine Recreational Information Program (MRIP) Impacts on New England Council Managed Species

George Darcy
Assistant Regional Administrator for Sustainable Fisheries
Northeast Regional Office

February 1, 2012

**NOAA
FISHERIES
SERVICE**



New England Council Managed Recreational Stocks

Stocks with MRIP-estimated catch and effort data:

- Gulf of Maine (GOM) and Georges Bank (GB) cod
- GOM haddock
- Southern New England (SNE) and GOM winter flounder
- Pollock

Stocks with Recreational Annual Catch Limits (ACLs)

- GOM Atlantic cod
- GOM haddock



MRFSS/MRIP Overlap and Transition—NE Impacts

- The current angler intercept survey design will continue through December 2012
- MRIP estimation methods began January 2012; both MRFSS and MRIP estimates will be available through calendar year 2012
- Fishing year 2011 (May 1, 2011- April 30, 2012) will be last full year of MRFSS estimates for groundfish
- Fishing year 2012 will have MRFSS-generated estimates for May 1, 2012-December 31, 2012, only



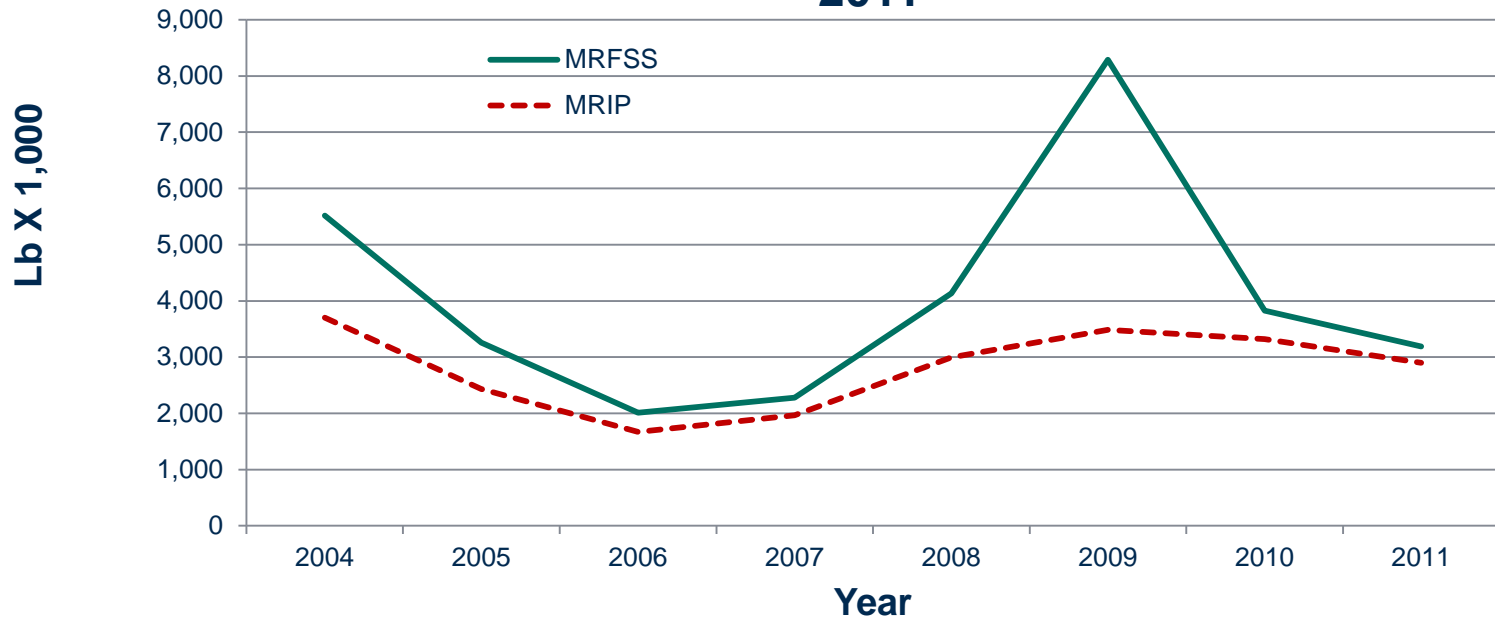
MRIP GOM Cod Information

- MRIP catch estimates (landings + discards) are lower in all years except 2006
- MRIP substantially revised the calendar year 2010/fishing year 2009 catch estimate
- Range of percent change in landings: -58% (FY 2009); -9% (preliminary FY 2011)
- Range of percent change in discards: +9% (FY2006); -56% (FY2009)



GOM Cod—MRFSS/MRIP Comparison

GOM Cod Landings Comparison by Fishing Year 2004-2011

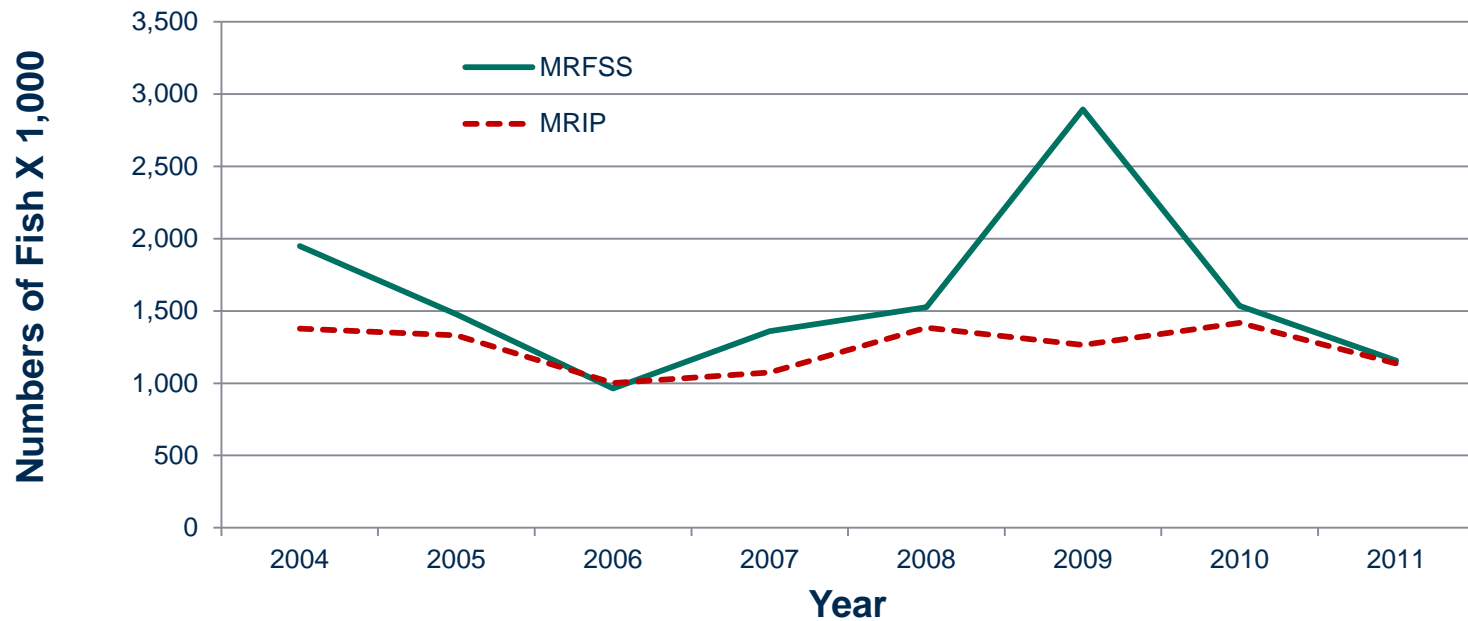


Note: FY 2011 data are preliminary through October 2011.



GOM Cod—MRFSS/MRIP Comparison

GOM Cod Total Catch Comparison in Numbers of Fish by Fishing Year 2004-2011



Note: FY 2011 data are preliminary through October 2011.



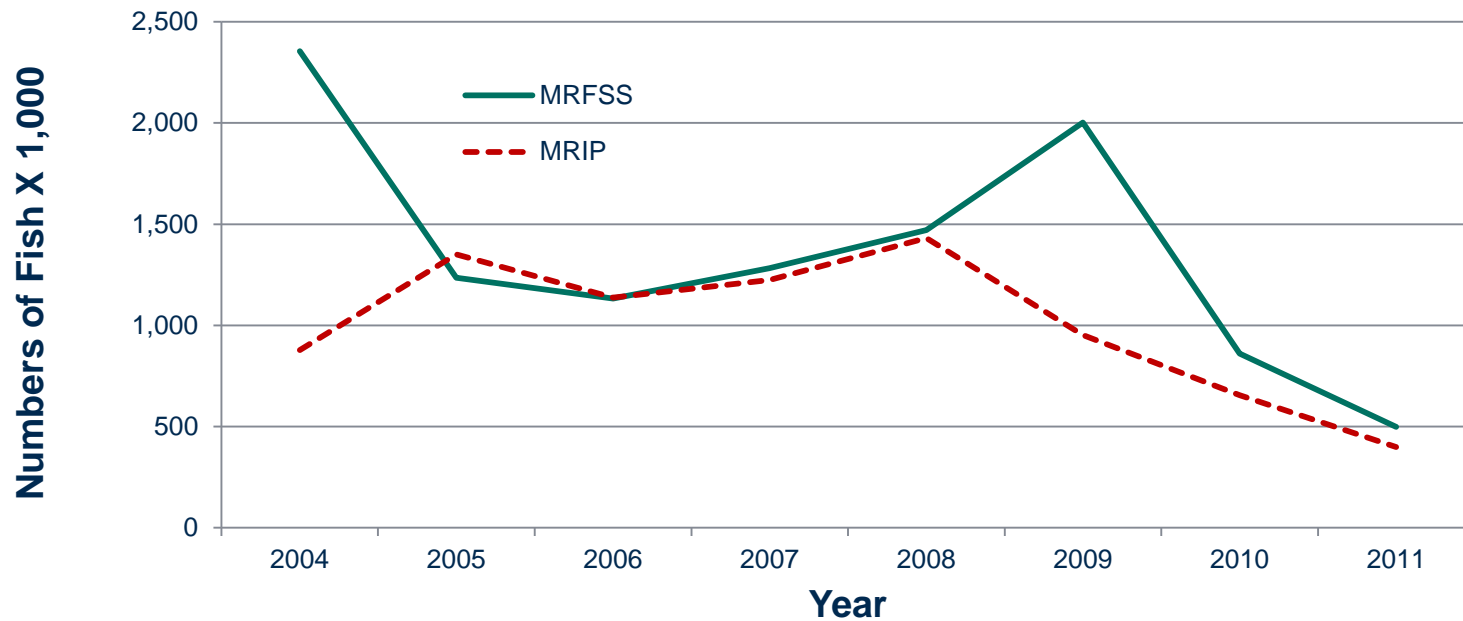
MRIP GOM Haddock Information

- MRIP catch estimates (landings + discards) are lower in most years
- MRIP substantially revised the calendar year 2010/fishing year 2009 catch estimate
- Range of percent change in landings: -63% (FY 2004); +9% (FY 2005)
- Range of percent change in discards: +41% (FY2008); -51% (FY2004)



Stock Information—MRFSS/MRIP Comparison

GOM Haddock Landings Comparison in Pounds by Fishing Years 2004-2011

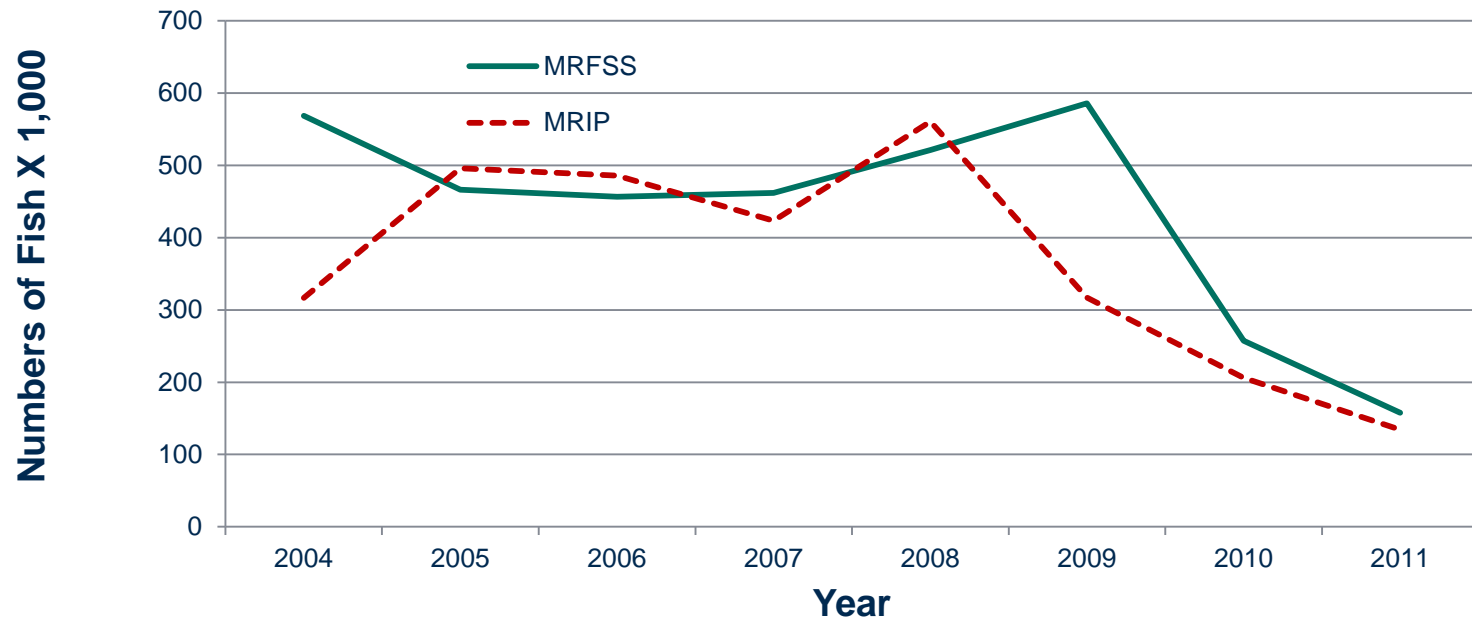


Note: FY 2011 data are preliminary through October 2011.



Stock Information—MRFSS/MRIP Comparison

GOM Haddock Total Catch Comparison in Numbers of Fish by Fishing Years 2004-2011



Note: FY 2011 data are preliminary through October 2011.



Additional Species/Stocks Percent Change from MRFSS to MRIP for Aggregate 2004 - Preliminary 2011

- GOM Winter Flounder: 5-percent increase
- SNE Winter Flounder: 11-percent decrease
- Pollock: 3-percent increase
- GB cod: 30-percent increase



Additional Species/Stocks

- Year-to-year variability in re-estimated MRIP data direction and magnitude are different for different species/stocks
- Large percent changes in both directions (increases and decreases)
- Relative scale of landings example: GB cod, 157% increase in 2008



ACL Monitoring

- To date, ACLs have been monitored using MRFSS data (all that was available)
- Beginning in FY 2012, this will cease to be an option
- Application of MRIP estimates for ACL monitoring while MRFSS remains available requires additional discussion



Impacts to Stock Assessments

- Incorporation of recreational data is major undertaking; could potentially influence many assessment components
- Effects of incorporating MRIP are not entirely predictable
- Incorporation of MRIP data may require a vetting process for assessment use
- Use of MRIP data may require benchmark-type peer-review to incorporate into assessments



Impacts to Stock Assessments

- Additional work is required to address pre-2004 recreational data series
 - Ongoing MRIP project to re-estimate 1998-2003
 - Planned calibration workshop, spring 2012