

Overview

Georges Bank Yellowtail Flounder Working Group

Tom Nies
New England Fishery Management
Council
June 18, 2012

US/CA Resource Sharing Understanding

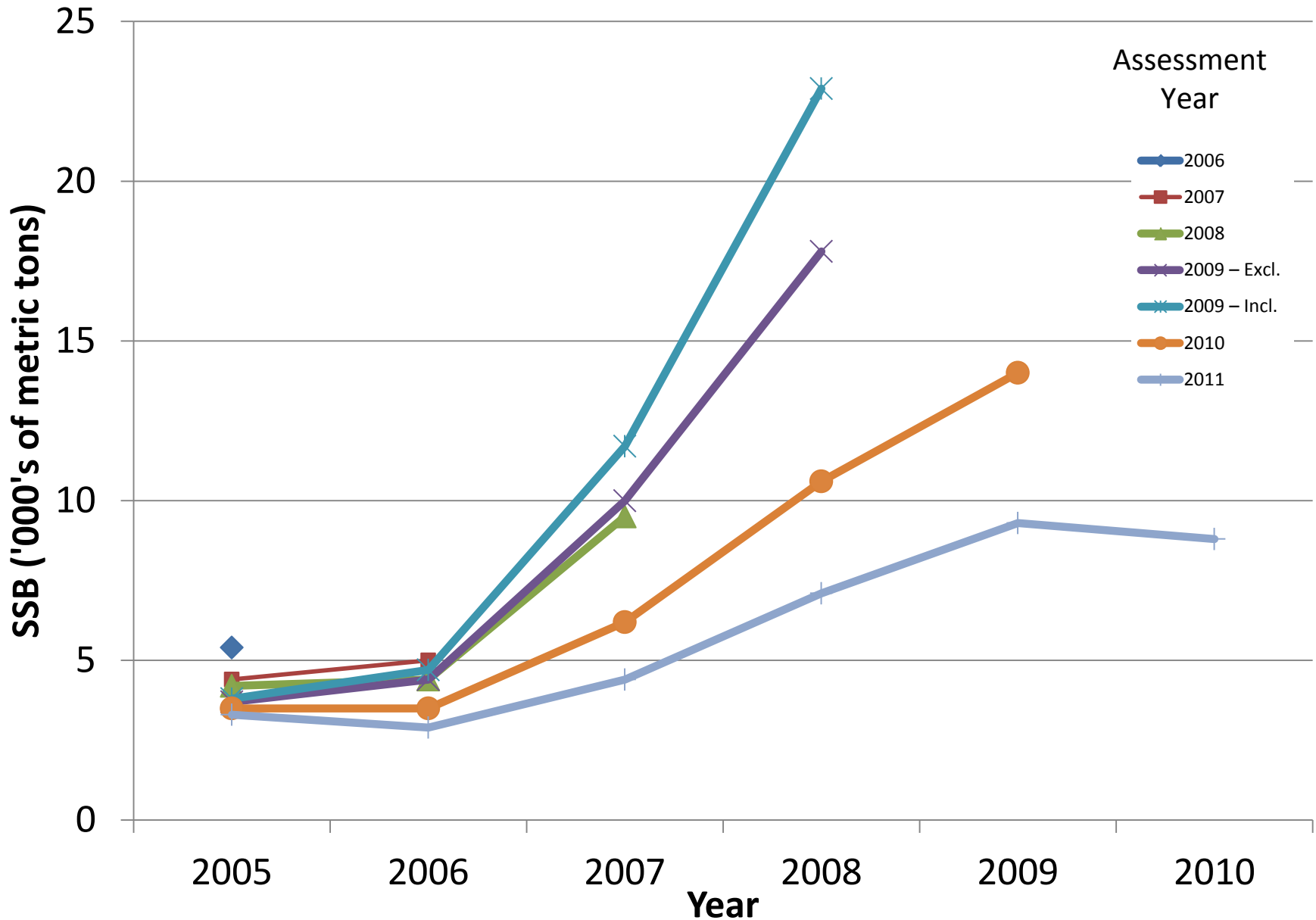
- EGB cod, EGB haddock, **GB yellowtail flounder**
- Management strategy:
 - “...maintain a low to neutral risk of exceeding the fishing mortality limit reference. When stock conditions are poor, fishing mortality rates should be further reduced to promote rebuilding.”*
- Transboundary Management Guidance Committee (TMGC)
 - 1 government, 1 scientist, 4 industry

TRAC Catch Advice

Probability of exceeding F_{ref}	25%	50%	75%
Split Series	1,400	1,700	1,900
Split Series rho adjusted	600	750	900
Single Series rho adjusted	1,400	1,700	1,900

2012 Catch (mt)	Split Series	Split Series rho adjusted	Single Series rho adjusted
600	+22%	+25%	0%
750	+20%	+20%	-2%
900	+18%	+16%	-3%
1,400	+12%	+1%	-9%
1,700	+8%	-8%	-13%
1,900	+5%	-14%	-15%

GB Yellowtail Flounder SSB Estimates



FY 2012 Catch(1)

- Recent declines in weights at age
- Truncated age structure
- Poor recruitment, including the lowest on record for the 2009 year class
- Slow stock rebuilding
- Failure to achieve Fref target (through 2009)

FY 2012 Catch (2)

- SSC recommends 1,150 mt ABC

“This ABC ...is consistent with the TMGC negotiated catch quota (which should be less than or equal to the ABC recommended by the SSC) of 950 (sic) mt.”

- Council rejects TMGC recommendation
- TMGC reconvenes and agrees on 1,150 mt
- US share : 49 pct = 564 mt

Groundfish and Scallop Sub-ACLs

- A16 created scallop fishery sub-ACL for GB and SNE/MA yellowtail flounder

“The specific value for a scallop fishery ACL is not specified because this will be determined as part of the biennial adjustment process.”

Framework 44 – FY 2010

- Allocation based on estimate of scallop fishery catch of YTF if scallop yield harvested:
 - Past catch:kept ratio
 - Adjusted for projected changes in scallop and yellowtail biomass
 - Multiplied by expected scallop harvest
- For 2011 and 2012, allocation was 90 percent of amount expected to be caught

FW 44 Estimate

Year	Expected to be Caught	Scallop Fishery ABC	Scallop Sub- ACL	Actual Catch
2010	<i>110</i>	<i>110</i>	<i>110</i>	<i>17.6</i>
2011	226	203	197	98
2012	353	318	307	

October 2011 Estimate

Year	Expected to be Caught	Potential Scallop ABC	Potential Sub- ACL	Actual Catch
2010	<i>27.6</i>	<i>110</i>	<i>110</i>	<i>17.6</i>
2011	48.6	43.7	42.4	98
2012	68	61.2	42.4	

Old (FW44) vs. New (FW47) Projections

- New model should better reflect spatial distribution of scallop fishing effort.
 - Original estimate used older version of SAMS model - highest biomass vs. highest CPUE.
- – New estimate uses 2010 and part of 2011 for CA1 and CA2 (i.e. 2010 YT bycatch rate 4X lower than 2009).
 - Original estimate used bycatch rates from 2009 and earlier

2011 expected vs. actual

- 2011 actual catch twice the expected value
- Estimated bycatch rate realized, but scallop effort in GB open areas double expected level

Table to be added prior to meeting.

FY 2012 Allocations

- Commercial Groundfish sub-ACL: 217.7
 - FY 2011 catch: 982.6 mt (ACL 1,142 mt)
- Scallop fishery sub-ACL: 307.5
 - FY 2011 catch: 97.8 mt (ACL 197 mt)
 - *Note: FY 2012 allocates more scallop trips to GB access areas than in FY 2011*

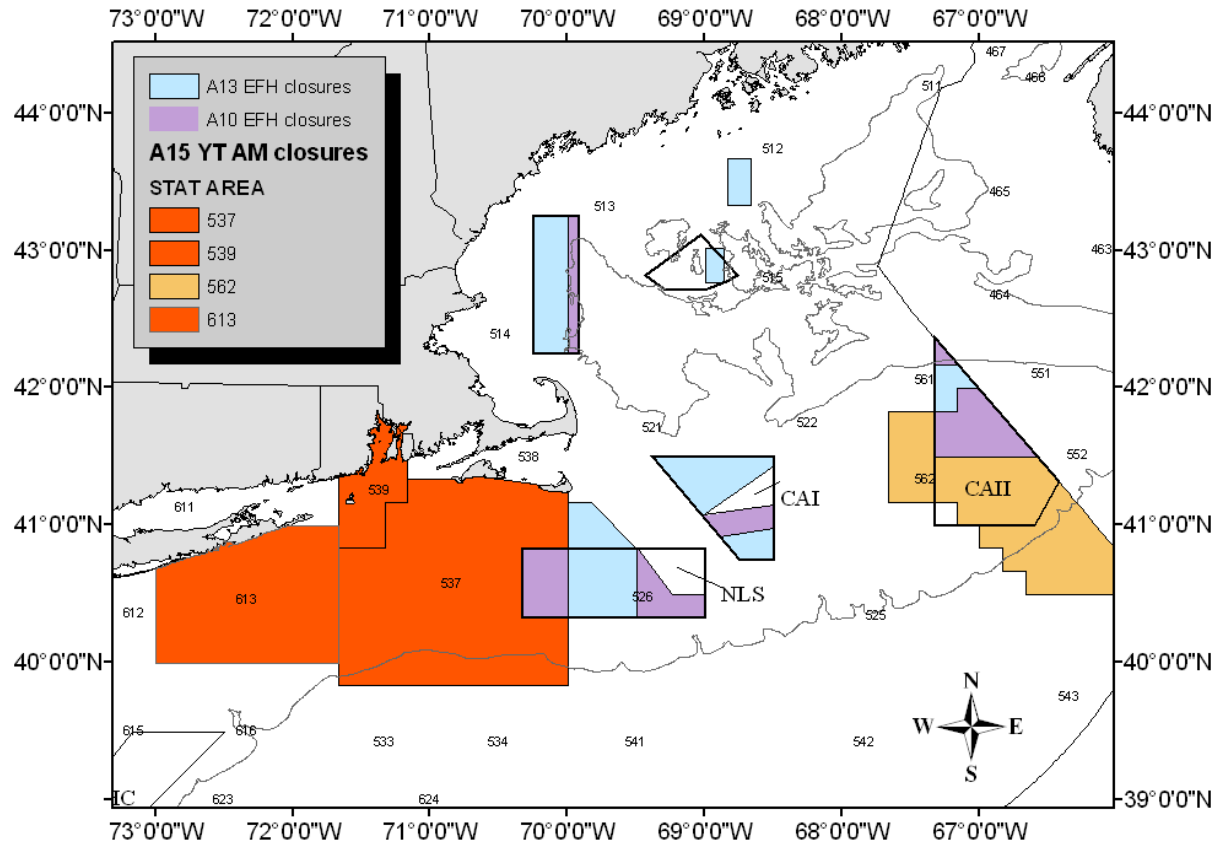
Key Management Components (1)

- Groundfish: Sectors cannot fish in GB yellowtail flounder stock area without GB YTF ACE
 - Gear specific
 - Option to explain how YTF will not be caught
- Scallops: Exceeding sub-ACL may reduce access in following year
- Exceeding US quota results in a payback next year that immediately reduces sector allocations

Key Management Components(2)

- No cap on YTF caught in access areas
- If scallop fishery is not expected to catch sub-ACL, by January 15 NMFS can re-estimate expected catch and modify sub-ACLs
- Scallop AM is only triggered if either:
 - Scallop sub-ACL exceeded and overall ACL exceeded
 - Scallop catch is 150 pct or more of sub-ACL

GB YT AM Area



Scallop YT AM Schedule

New Framework 23 Georges Bank AM closure schedule for years when CA2 is OPEN

Overage	LA Closure
3% or less	Oct-Nov
3.1-14%	Sept-Nov
14.1-16%	Sept-Jan
16.1-39%	Aug-Jan
39.1-56%	Jul-Jan
Greater than 56%	Mar-Feb

New Framework 23 Georges Bank AM closure schedule for years when CA2 is CLOSED

Overage	LA Closure
1.9% or less	Sept-Nov
2.0 -2.9%	Aug-Jan
3.0 -3.9%	Mar, and Aug-Feb
4.0 - 4.9%	Mar, and Jul-Feb
5.0 -5.9%	Mar-May, and Jul-Feb
6.0% or greater	Mar-Feb

GB YT Working Group Meeting

- April Council meeting – request for NMFS to create GB YT working group to: 1) expedite transfer from scallop fishery; and 2) consider modification of US/CA sharing agreement
- May 23 – meeting in New Bedford
- Overview of YT science and management
- Identified several potential short and long term solutions

Short term – YT Transfer

2. In-season re-estimate and transfer of GB YT from Scallop to GF fishery

- A. FW47 – No Action - By January 2013 re-estimate and potential transfer
- B. Lump sum earlier than January based on new projection of YT catch for the scallop fishery – Aug?
- C. Transfer based on preliminary 2012 catch data after majority of scallops trips fished in GB access trips (Oct/Nov)
- D. Rolling transfer - some now, some in the Fall, and some in Jan

** Some discussion of eliminating the scallop AMs for 2012 to facilitate transfer YT catch now. Instead the overall AM for the fishery would be the automatic reduction of US portion of 2013 GB YT catch if overage in 2012.*

Short term – Reduce GF catch

- Trip limits for sector vessels in US/CA area
- Zero possession limit for GF vessels in US/CA area
- Partial area closure when YT ACE harvested
A sector vessel could still fish in portions of US/CA area but only in areas with very minimal YT catch
- Bycatch set-aside quota
If additional YT available set up a “bycatch only” pool all vessels draw from rather than reallocating to sectors directly
- Require selective trawl gear
Required to use haddock separator or Ruhle trawl now or if majority of ACE harvested

Longer Term (2013/2014 Priorities)

- Extend short term ideas longer than 2012 – initiate Council action
- Additional gear modifications to reduce YT catch (i.e. low profile dredge in scallop fishery)
- Further develop hotspot avoidance systems:
 - Expand voluntary bycatch reporting system to GF fishery
 - Consider requiring participation for both fleets
 - Electronic bycatch reporting
- Identify ways to increase scallop fishery access in areas that are currently closed to reduce effort in higher YT catch areas (access in northern edge vs. GB open areas)

Questions?