

**NOAA
FISHERIES
SERVICE**

#1



Revised Approach to Provide Fishery Stock Assessment Advice, NE Region, USA

**James Weinberg (with contributions from:
Richard Merrick, Fredric Serchuk, Paul Rago,
George Darcy, Rich McBride, Eric Robillard)**

Fall 2011

Outline

Talk will describe:

- 1. transition from SAW/SARC stock assessment process to new process.**
- 2. why change is needed.**
- 3. concerns about tradeoffs that accompany transitioning to the new assessment process.**

Current SAW/SARC process:

- Participants are familiar w/ process; started 1985**
- Assessment ToRs: extensive (external input, review of data and model, some food web considerations, projections, status, etc)**
- Full Independent Peer Review; public**
- Complete documentation (reports)**
- 5-8 detailed benchmarks/yr (+ updates, etc)**

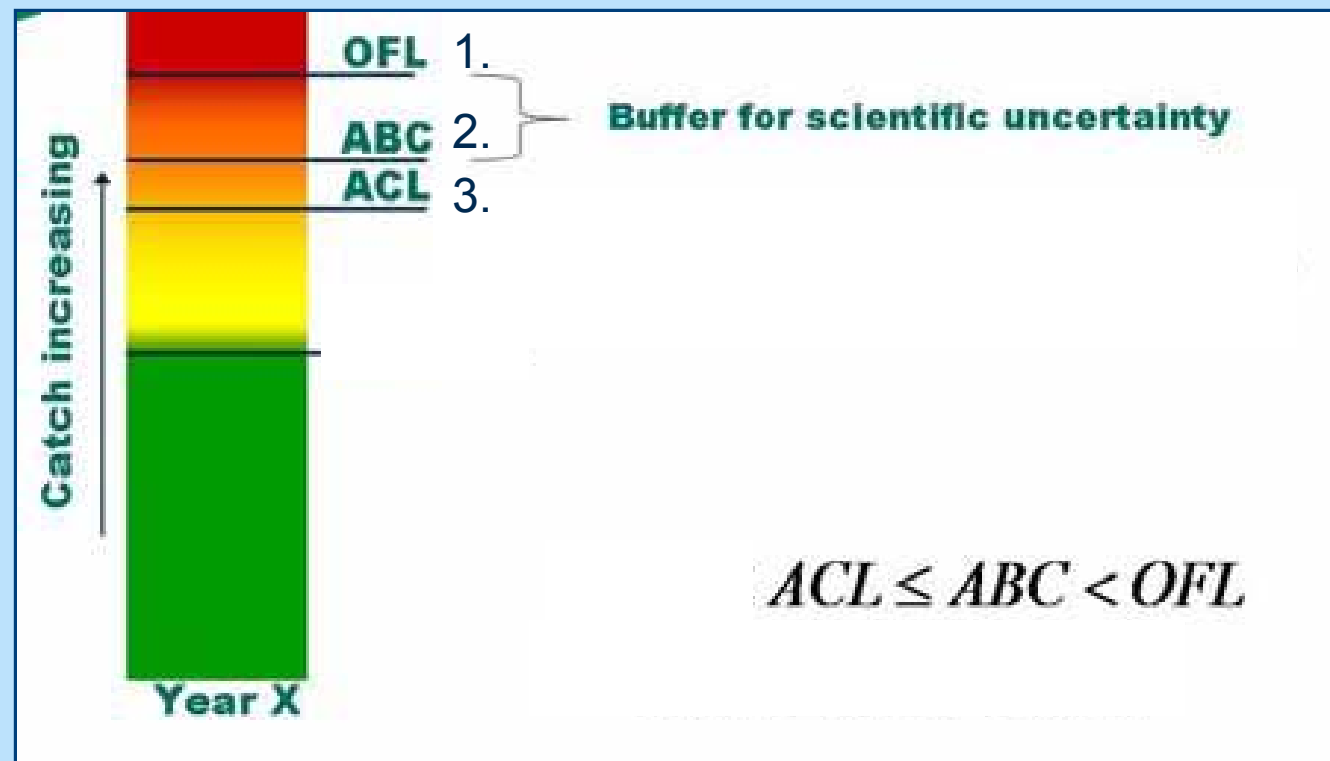
Why change the process?

- Current process can't keep up with new legal demands
- New fed management rules call for hard catch limits, on every stock, by year
- Need to ↑ # of assessments/yr (~50 stocks to assess)
- Current process requires too much time per assessment, given current resources
- Want “up to date” assessments for decision making. Long time gaps increase assessment uncertainty and management buffers

New US fishery law:

Reauthorized Magnuson-Stevens Fishery Conservation and Management Act (RMSA)

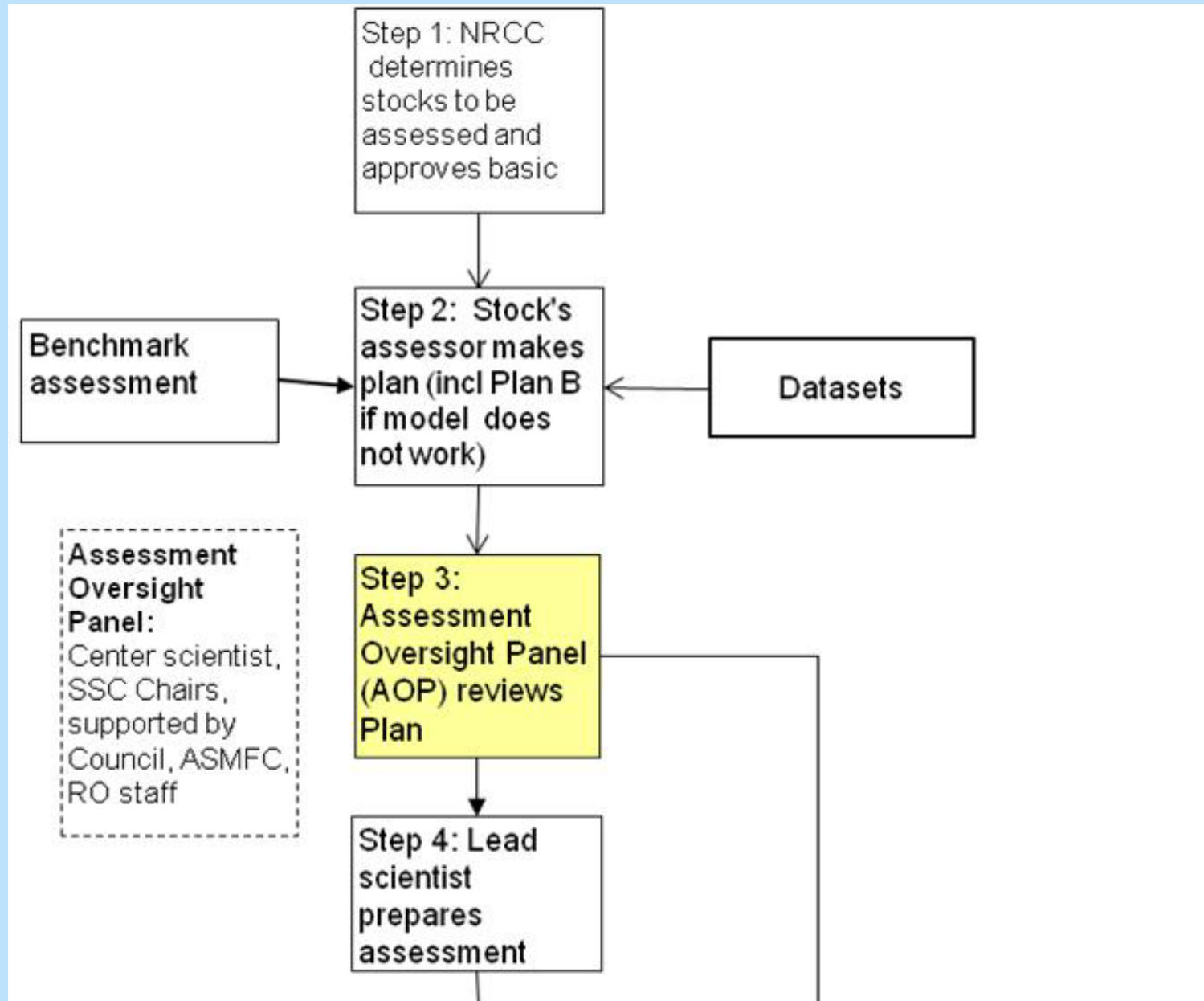
US Dept. of Commerce, May 2007



The New Planned process:

- **10-25 “Operational Track” Assessments/yr**
- **Quicker**
- **Shorter list of ToRs**
- **Less Peer Review, with more SSC participation**
- **“Research Track” to develop new methodologies**
- **Transition in 2011-2013**

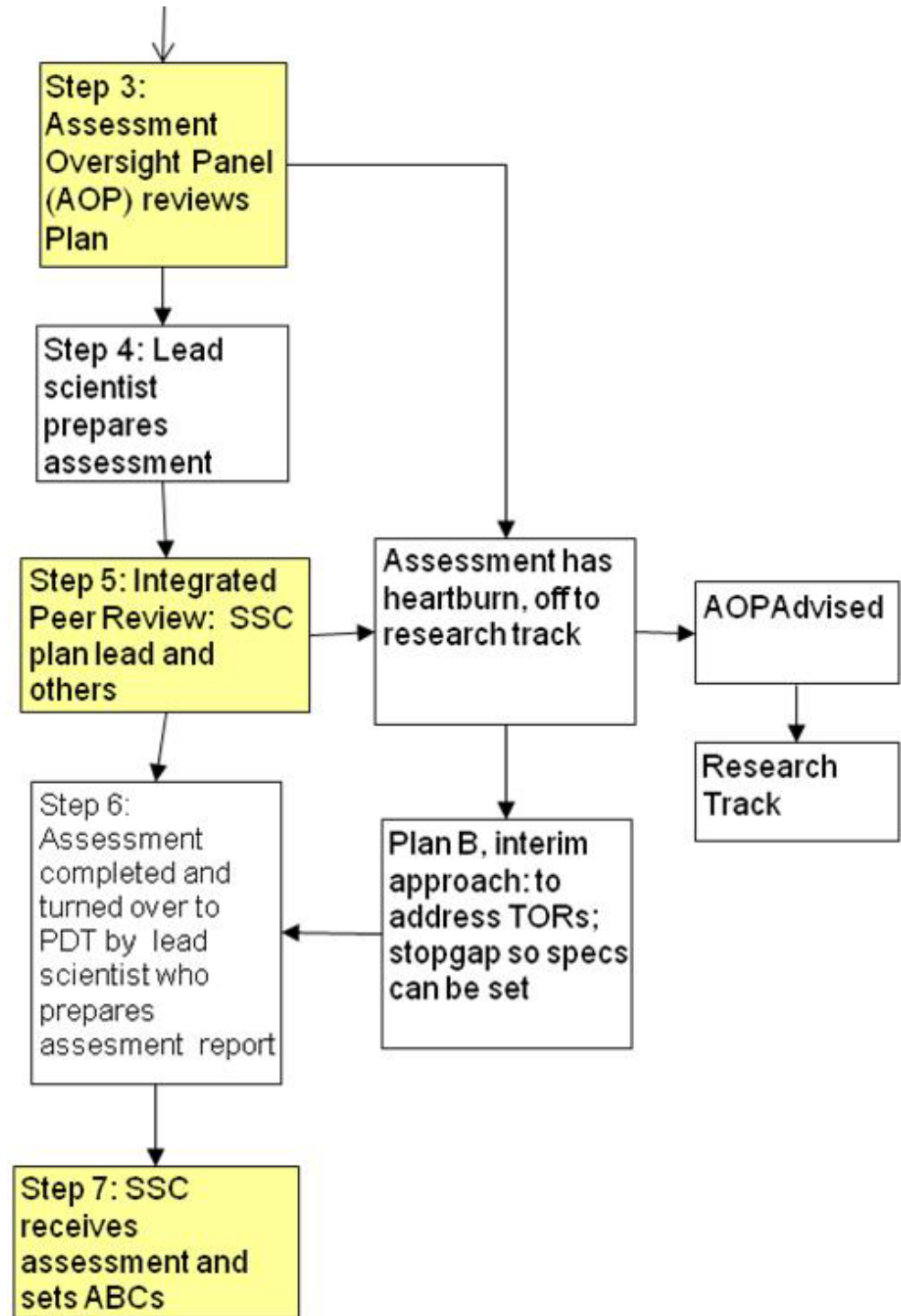
New process: flowchart (part 1)



Flowchart (part 2.)

Assessment Oversight Panel:
Center scientist, SSC Chairs, supported by Council, ASMFC, RO staff

Integrated Peer Review: SSC Plan Lead, Lead scientist, Council/RO Staff, State scientists



Transition Schedule

2011

- SARC 52 and 53
- Operational Track Test Run (NE Grndfsh)

2012

- SARC 54 and 55
- Operational Track Test Run (NE Grndfsh & Mid-Atl Updates)

2013

- SARC 56 and 57
- Operational Track Test Run (NE Grndfsh & Mid-Atl Updates)

2014

- Operational Track
- Research Track

Possible Tradeoffs and Constraints:

- Increase the throughput -vs- Impact on assessment information/content/quality
 - More Operational Assessments (each with fewer TORs and less peer review)
 - Less investigation of research topics
- Adjustment of Managers & Regulators to having more stock assessment results, more frequently
- NEFSC services (e.g., staff support of some Council activities)

Summary

- 1. Current assessment process in NE USA does not produce enough assessments to meet demands of revised MSA.**
- 2. Response: developing new process to provide “operational track” assessments at a faster rate (with separate “research track”).**
- 3. Concerned about tradeoffs as we transition from the old to the new process.**

More Acknowledgements

Individuals from the following groups contributed ideas to develop the new process:

NEFMC and SSC

MAFMC and SSC

NERO

ASMFC

NRCC

NEFSC