

Regional Ocean Planning Update

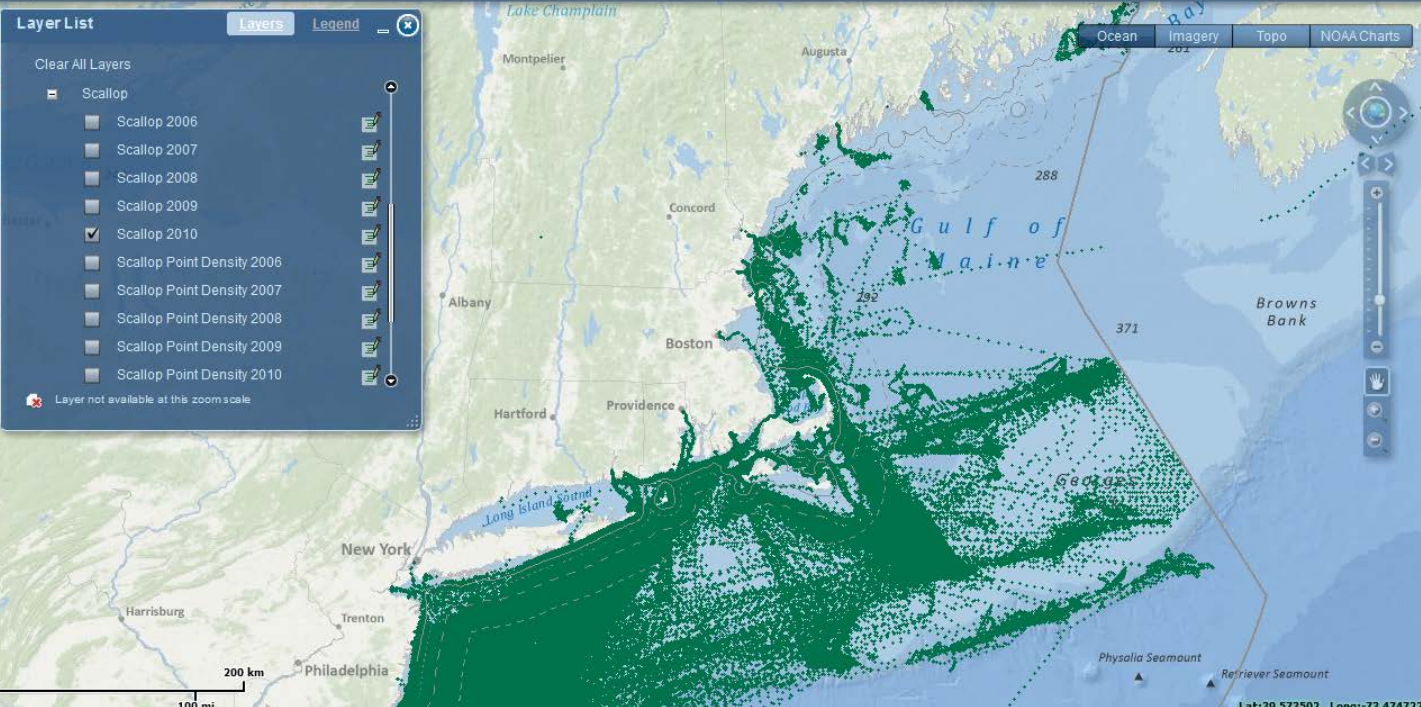
- Formal meeting in November, 2012
- Next meeting April 11-12 in RI
- Continuing focus on fisheries mapping
 - Meetings at various venues
 - What's missing, what's needed, caveats, next steps
 - Through next couple of months for this stage

Layer List Layers Legend

Clear All Layers

- Scallop
 - Scallop 2006
 - Scallop 2007
 - Scallop 2008
 - Scallop 2009
 - Scallop 2010
 - Scallop Point Density 2006
 - Scallop Point Density 2007
 - Scallop Point Density 2008
 - Scallop Point Density 2009
 - Scallop Point Density 2010

Layer not available at this zoom scale

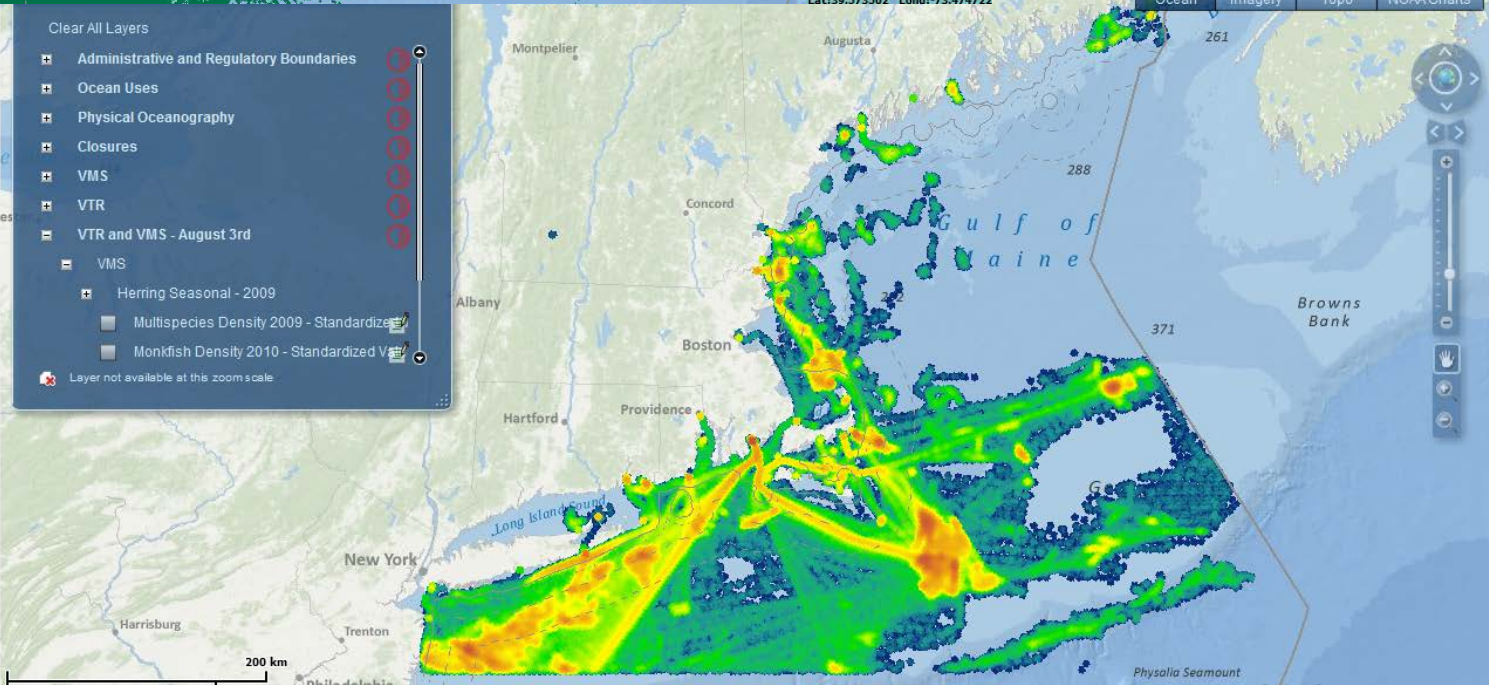


Lat:39.573502 Lon:-73.474722

Clear All Layers

- Administrative and Regulatory Boundaries
- Ocean Uses
- Physical Oceanography
- Closures
- VMS
- VTR
- VTR and VMS - August 3rd
- VMS
 - Herring Seasonal - 2009
 - Multispecies Density 2009 - Standardized
 - Monkfish Density 2010 - Standardized

Layer not available at this zoom scale



Lat:39.573502 Lon:-73.474722

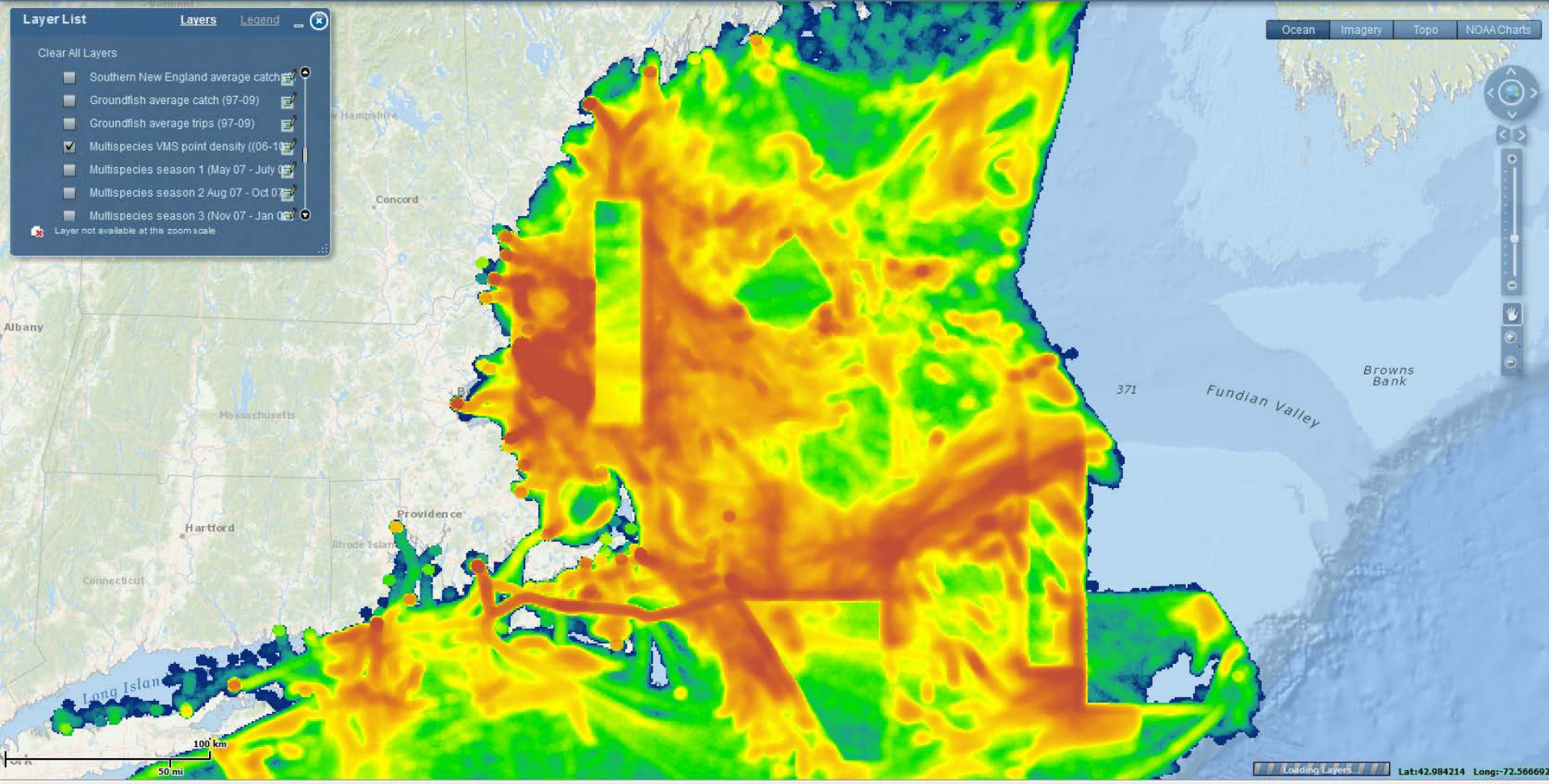
Layer List Layers Legend

Clear All Layers

- Southern New England average catch
- Groundfish average catch (97-09)
- Groundfish average trips (97-09)
- Multispecies VMS point density ((06-10))
- Multispecies season 1 (May 07 - July 07)
- Multispecies season 2 Aug 07 - Oct 07
- Multispecies season 3 (Nov 07 - Jan 08)

Layer not available at this zoom scale

Ocean Imagery Topo NOAA Charts



Dogfish – break down by years

