

APPENDIX I TO FRAMEWORK 23

1.1 ECONOMIC AND SOCIAL TRENDS IN THE SEA SCALLOP FISHERY

1.1.1 Introduction

This section of the document describes the economic and social trends of the scallop fishery, including trends in landings, revenues, prices and foreign trade for the sea scallop fishery since 1994. In addition, it provides background information about the scallop fishery in various ports and coastal communities in the Northeast.

1.1.2 Trends in Landings, prices and revenues

In the fishing years 2002-2010, the landings from the northeast sea scallop fishery stayed above 50 million pounds, surpassing the levels observed historically (Figure 1). The recovery of the scallop resource and consequent increase in landings and revenues was striking given that average scallop landings per year were below 16 million pounds during the 1994-1998 fishing years, less than one-third of the present level of landings. The increase in the abundance of scallops coupled with higher scallop prices increased the profitability of fishing for scallops by the general category vessels. As a result, general category landings increased from less than 0.4 million pounds during the 1994-1998 fishing years to more than 4 million pounds during the fishing years 2005-2009, peaking at 7 million pounds in 2005 or 13.5% of the total scallop landings. The landings by the general category vessels declined in 2010 as a result of the Amendment 11 implementation that restricts TAC for the limited access general category fishery to 5.5% of the total ACL.

Figure 2 shows that total fleet revenues tripled from about \$120 million in 1994 to over \$450 million in 2010 (in inflation-adjusted 2010 dollars). Scallop ex-vessel prices increased after 2001 as the composition of landings changed to larger scallops that in general command a higher price than smaller scallops. However, the rise in prices was not the main factor that led to the increase in revenue in the recent years compared to 1994-1998. In fact, inflation adjusted ex-vessel prices in 2008-2009 were lower than prices in 1994 (Figure 3). The increase in total fleet revenue was mainly due to the increase in scallop landings and the increase in the number of active limited access vessels during the same period.

Figure 1. Scallop landings by permit category and fishing year (dealer data)

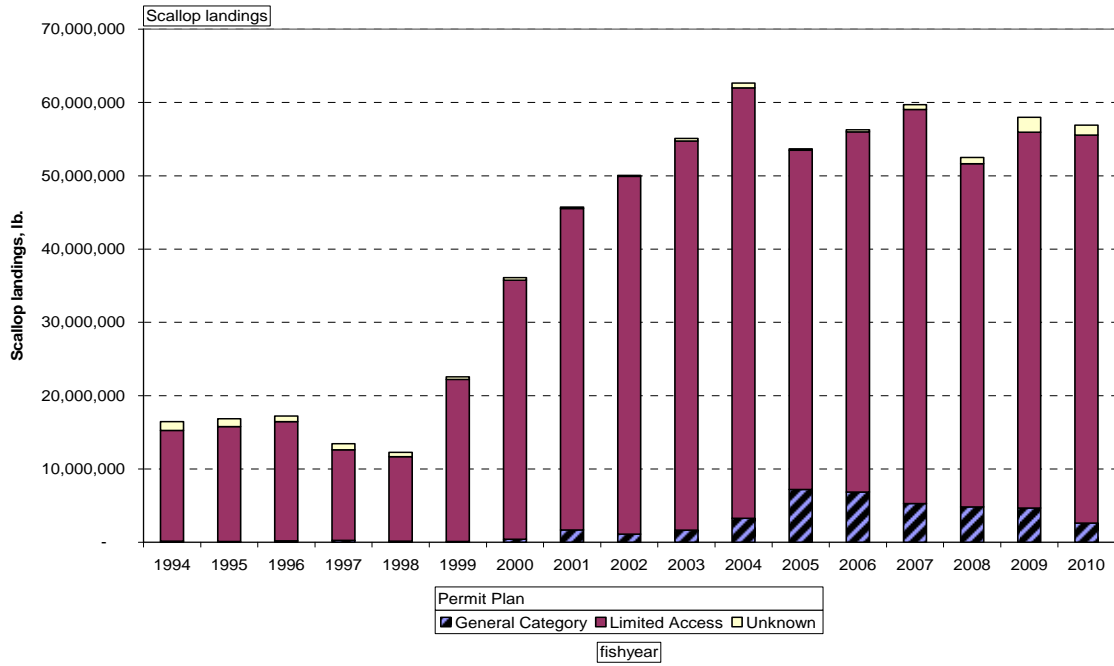


Figure 2. Scallop revenue by permit category and fishing year in 2010 inflation adjusted prices (dealer data)

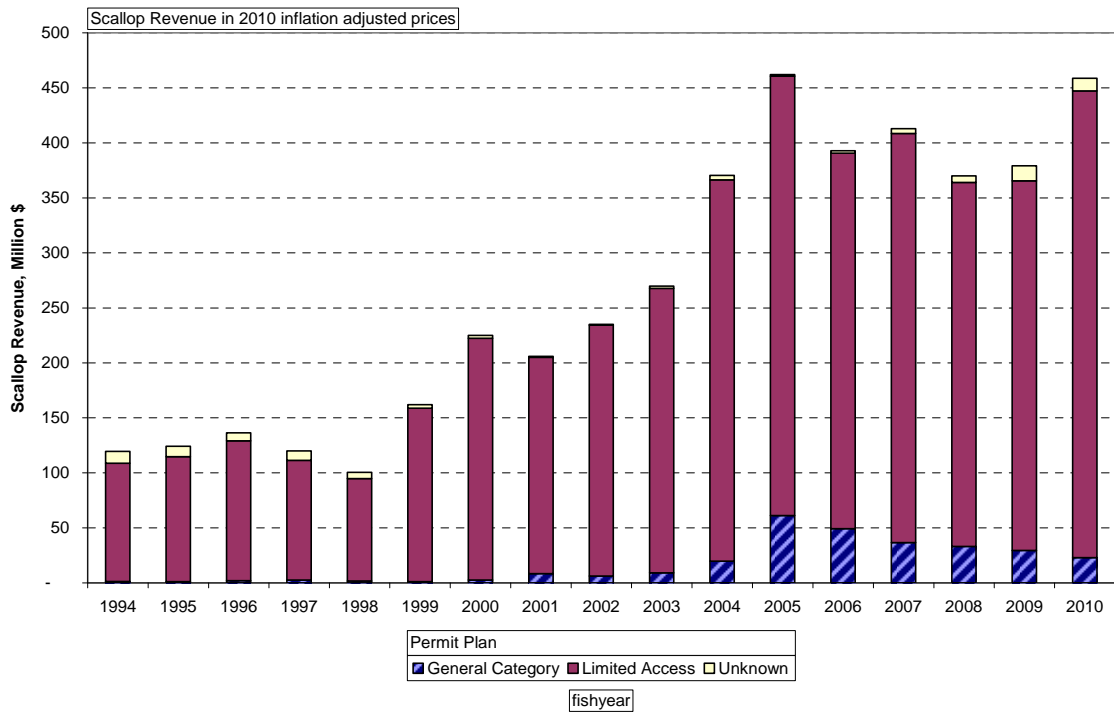
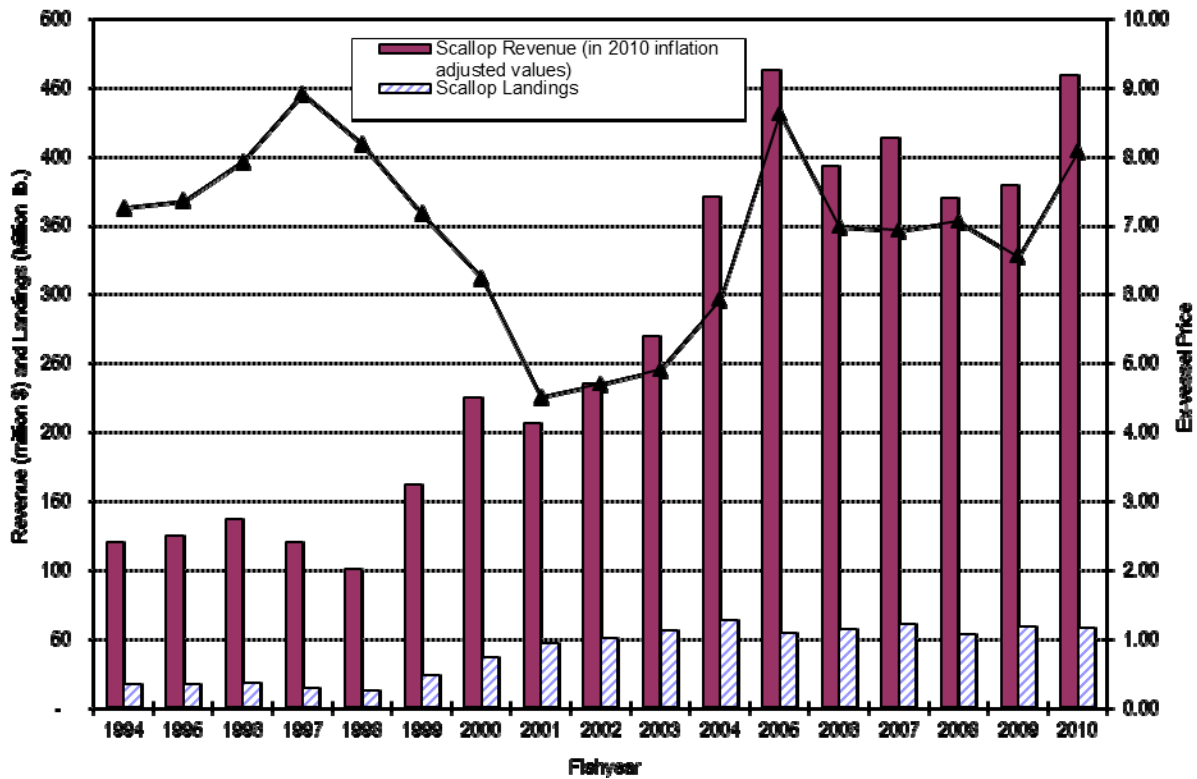


Figure 3. Trends in total scallop landings, revenue and ex-vessel price by fishing year (including limited access and general category fisheries, revenues and prices are expressed in 2010 constant prices)



The trends in revenue per full-time vessel were similar to the trends for the fleet as a whole. Figure 4 shows that average scallop revenue per limited access vessel tripled from about \$400,000 in 1994 to over \$1,200,000 in 2010 as a result of higher landings combined with an increase in ex-vessel price to about \$8.00 per pound of scallops.

Figure 4. Trends in average revenue per full time vessel by category

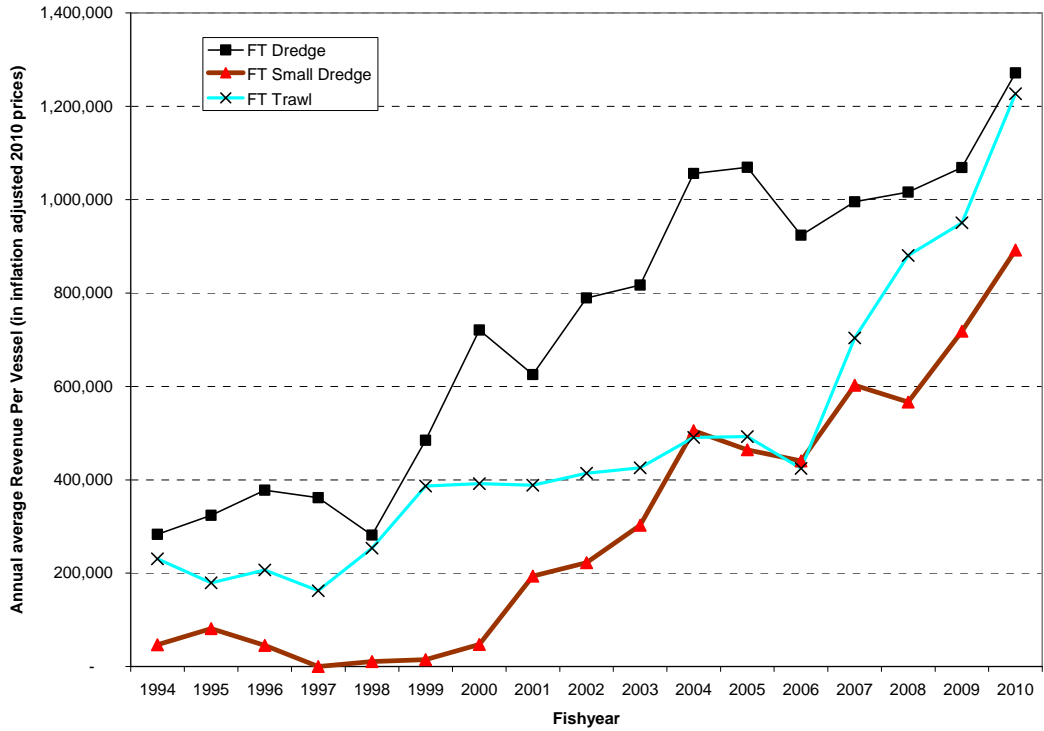


Figure 5. Trends in average scallop landings per full time vessel by category (VTR data)

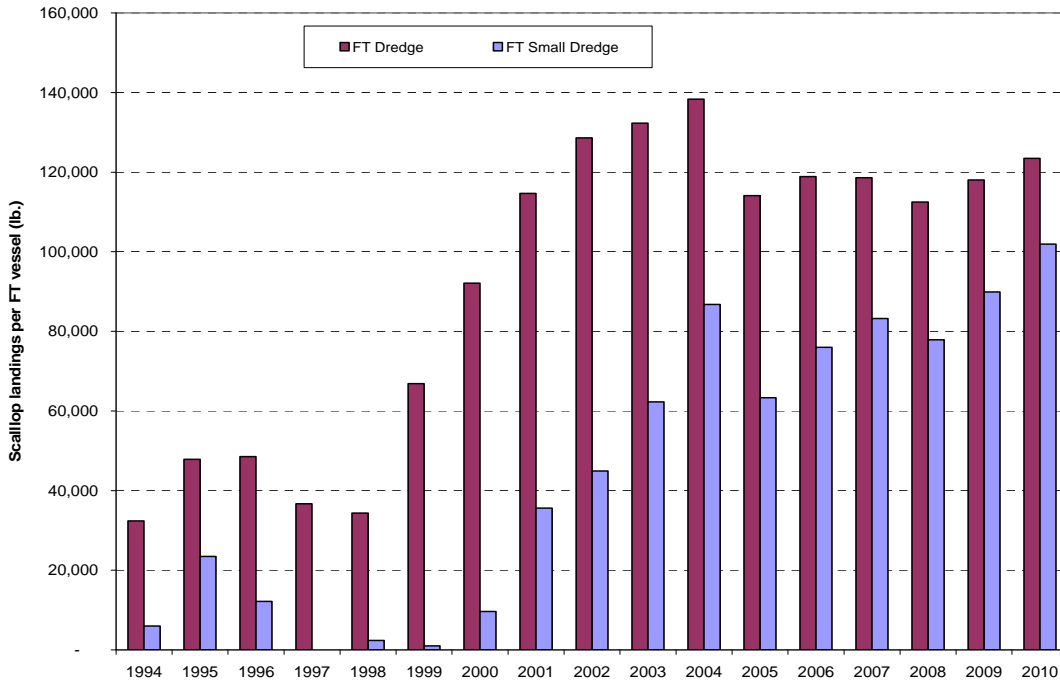


Table 1. Average annual revenue per general category vessel by permit category

FISHYEAR	IFQ	INCI	NGOM	SCG	VMS	GENERAL CATEGORY and IFQ
1994				3,322		3,322
1995				2,838		2,838
1996				4,367		4,367
1997				5,117		5,117
1998				3,713		3,713
1999				3,354		3,354
2000				6,626		6,626
2001				14,316		14,316
2002				10,966		10,966
2003				14,330		14,330
2004		606		25,814	1,748	25,596
2005		5,182		52,897	17,263	40,451
2006		4,880			47,499	44,301
2007	7,959	3,732	3,676		43,910	40,604
2008	38,861	4,387	17,785		38,042	34,113
2009	68,068	12,085	5,140			54,323
2010	75,326	14,362	5,008			56,965

Table 2 describes the fraction of total landings by area for all limited access vessels from 2004-2009. In general, more and more of the total catch for the fishery is coming from access areas, open area catch has declined from 60% to 71% of total catch in 2004-2004 to just under 40% in 2007 and 2008 and to under 53% in 2009.

Table 2 – Percent of total limited access scallop catch by area and calendar year (Dealer and DAS data)

Access Area	2004	2005	2006	2007	2008	2009
Closed Area 1	0.00%	14.51%	0.00%	9.83%	0.00%	0.00%
Closed Area 2	7.19%	13.87%	27.26%	0.00%	0.00%	6.31%
Delmarva	0.00%	0.00%	0.00%	0.00%	0.00%	10.32%
Elephant Trunk	0.00%	0.00%	0.00%	31.04%	49.91%	30.77%
Hudson Canyon	29.24%	0.00%	0.00%	10.02%	0.00%	0.00%
Nantucket Lightship	3.69%	0.00%	16.49%	10.39%	9.84%	0.00%
OPEN	59.87%	71.62%	56.25%	38.71%	40.24%	52.60%

1.1.3 Trends in effort and LPUE

There has been a steady decline in the total DAS used by the limited access scallop vessels from 1994 to 2010 fishing years as a result of the effort-reduction measures of Amendment 4 (1994). DAS allocations during this period were reduced almost by half from 204 DAS in 1994 to 120 DAS for the full-time vessels and in the same proportions for the part-time and occasional vessels from their base levels in 1994 (Table 3). As a result, DAS used reached the lowest levels of about 23,000 days in the 1999 and 2000 fishing years from about 35,000 days in 1994 (Figure 6).

Table 3. DAS and trip allocations per full-time vessel

Year	Allocations based on the Management Action	Total DAS Allocation (1)	Estimated Open area DAS allocations (2)	Access area trip allocations (3)	DAS charge or equivalent per access area trip (4)	Equivalent (estimated) DAS allocation for access areas (5)
1994	Amendment 4	204	None	None		None
1995	Amendment 4	182	None	None		None
1996	Amendment 4	182	None	None		None
1997	Amendment 4	164	None	None		None
1998	Amendment 4	142	None	None		None
1999	Amendment 7 Framework 11	120	90 to 120	3	10	0 to 30
2000	Framework 13	120	60 to 120	6	10	0 to 60
2001	Framework 14	120	90 to 120	3	10	0 to 30
2002	Framework 14	120	90 to 120	3	10	0 to 30
2003	Framework 15	120	90 to 120	3	10	0 to 30
2004	Framework 16	126	42 (MAX.62)	7	12	84
2005	Framework 16	100	40 (MAX.117)	5	12	60
2006	Framework 18	112	52	5	12	60
2007	Framework 18	111	51	5	12	60
2008	Framework 19	95	35	5	12	60
2009	Framework 19	97	37	5	12	60
2010	Framework 21	86	38	4	12	48
2011	Framework 22	80	32	4	12	48

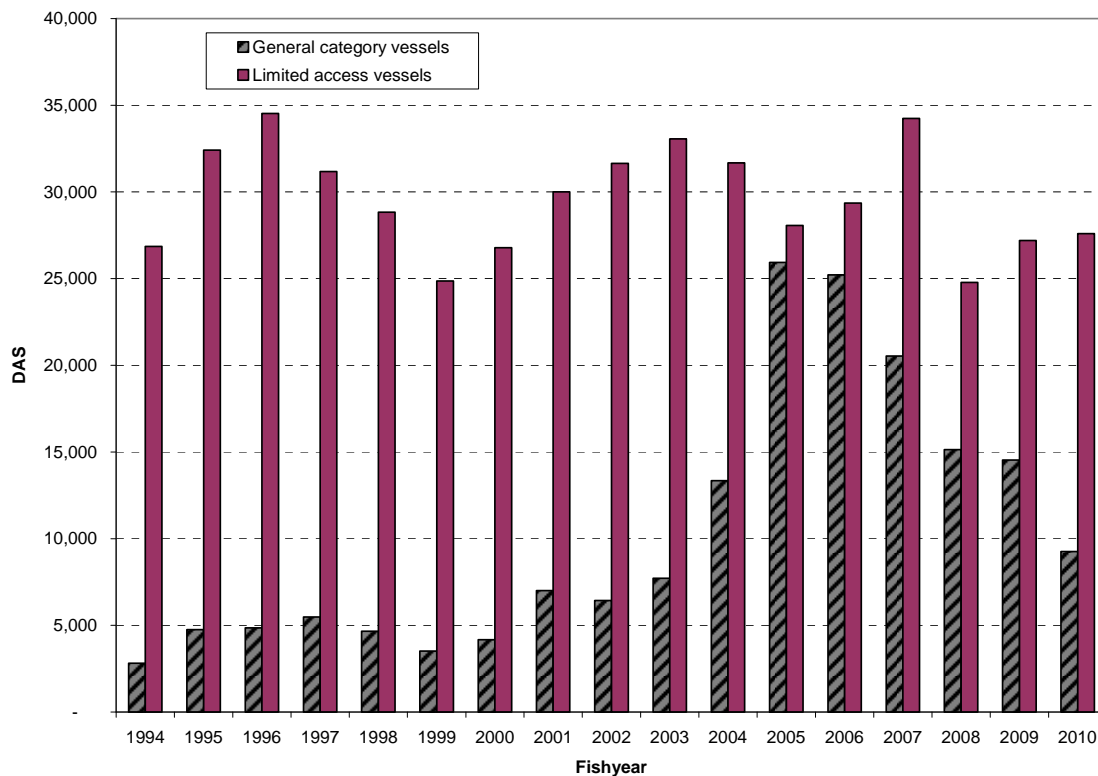
Total DAS allocation per full-time vessel represents a rough estimate for years 2004-11 since DAS is allocated for open areas only. DAS allocation for access areas is estimated by assuming an equivalent 12 days-at-sea allocation for each access area trip with a possession limit of 18,000 pounds.

After fishing year 2000, fishing effort started to increase as more limited access vessels participated in the sea scallop fishery. The increase in total effort was mostly due to the increase in the number of vessels because total DAS allocations (mostly less than 120 days) were lower than the DAS allocations in the mid-1990s (over 142 days, Table 3). The recovery of the scallop resource and the dramatic increase in fishable abundance after 1999 increased the profits in the scallop fishery, thus leading to an increase in participation by limited access vessels that had been inactive during the previous years. Georges Bank closed areas were opened to scallop fishing starting in 1999 by Framework 11 (CAII) and later by Framework 13 (CAII, CAI, NLS), encouraging many vessel owners to take the opportunity to fish in those lucrative areas. Frameworks 14 and 15 provided controlled access to Hudson Canyon and VA/NC areas. As a result, 45 new limited access vessels became active in the sea scallop fishery after 2000 during the next four fishing years. The total number of full-time equivalent vessels reached 310 in 2003 and total fishing effort by the fleet increased to 31,864 days in 2003 from about 22,627 in 2000 (Table 7).

Total fishing effort (DAS used) declined after 2003 even though the number of active vessels increased to 343 vessels in 2006 from 310 vessels in 2003. With the implementation of Amendment 10 (2004) the limited access vessels were allocated DAS for open areas and a number of trips for the specific access areas with no open area trade-offs. The open area allocations were reduced to 42 DAS in 2004 whereas full-time vessels were allocated 7 access area trips in the same year (NEFSC, Framework 16). Even though total DAS

equivalent allocations remained around the same levels during 2005-2007 (at about 110 equivalent days, Table 3), the fishing effort, i.e., fleet DAS used increased in the 2007 fishing year as many vessels took their unused 2005 HCA trips in that year. If not for those HCA trips, the total effort in the scallop fishery would probably have stayed constant during 2005-2007 with almost all qualified limited access vessels participating in the fishery. Total DAS-used declined further in 2008 to 24,121 days as the open area DAS allocations are reduced by 30% from 51 days to 35 days per full-time vessel, but increased to 26,300 in 2009 as the limited access vessels received access area trips (5 trips per vessel). Total DAS-used by the limited access vessels were slightly higher in 2010 fishing year despite lower number of access area trips (4 trips per vessel). Open area DAS allocations were slightly higher in 2010 (38 DAS versus 37 DAS in 2009).

Figure 6. Total DAS-used by plan (VTR data: Date landed – Date sailed)



The impact of the decline in effort below 30,000 days-at-sea since 2005 (with the exception of 2007) on scallop revenue per vessel was small, however, due to the increase in LPUE from about 1600 pounds per day-at-sea in 2007 to over 2000 pounds per day-at-sea in 2010 (Figure 7) As a result of the constant increase in LPUE after 1998 from about 450 pounds per DAS in 1994 to over 1500 pounds per DAS after 2000, scallop revenue per vessel quadrupled in recent years compared to the levels in mid 1990s.

Figure 7. LPUE by plan (VTR data: Scallop landings/DAS)

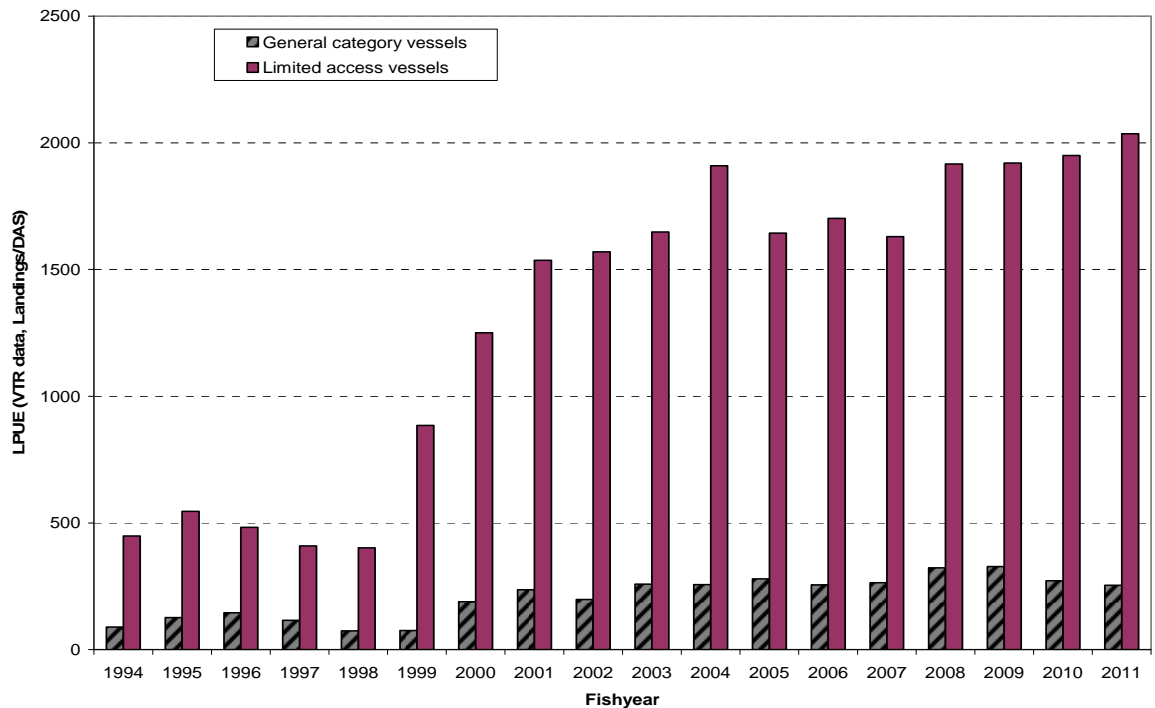


Figure 8. LPUE for the full-time vessels by category (VTR data: Scallop landings/DAS)

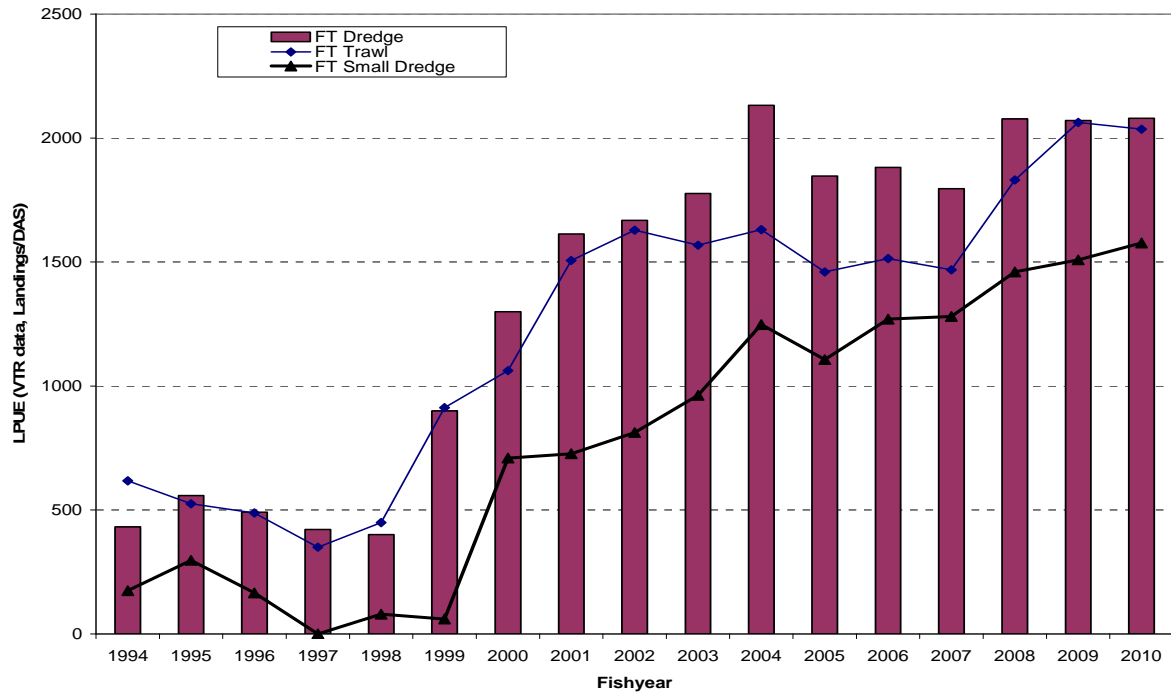
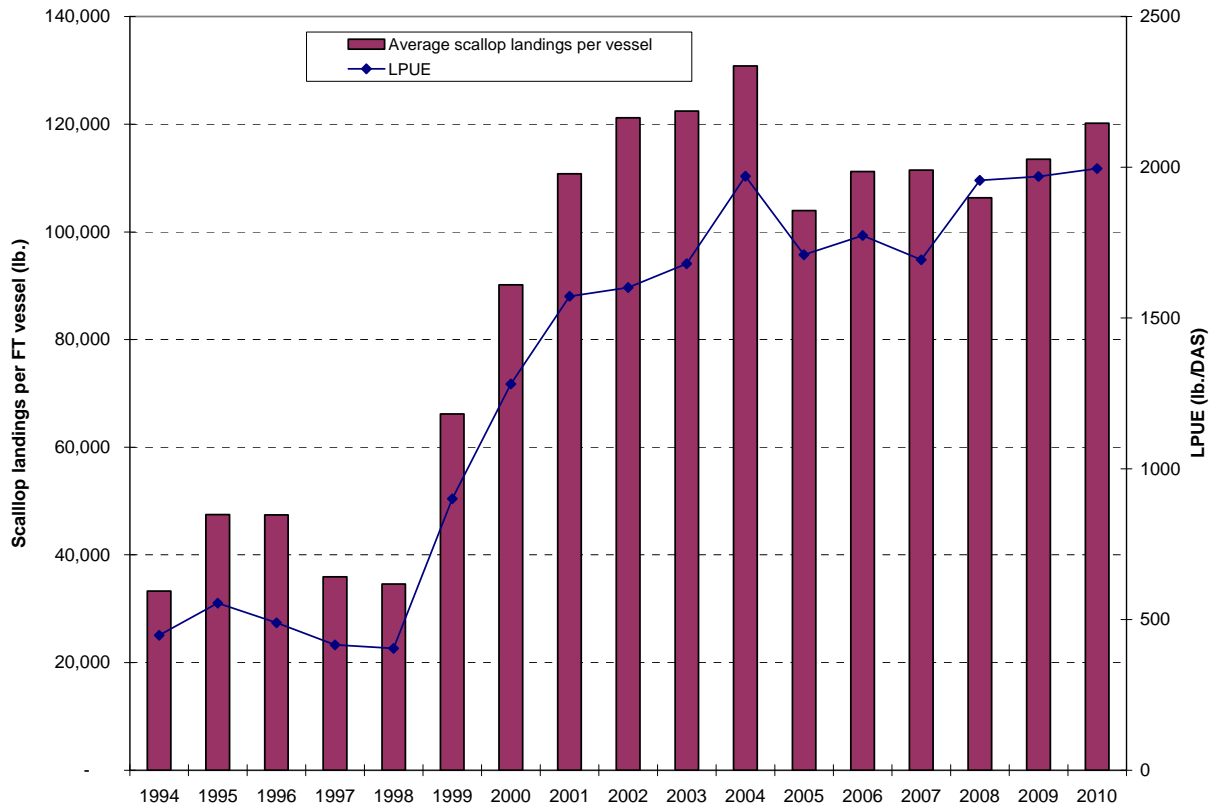


Figure 9. LPUE and average scallop landings per FT vessel (VTR data)



1.1.4 Trends in the meat count and size composition of scallops

Average scallop meat count has declined continuously since 1999 as a result of effort-reduction measures, area closures, and an increase in ring sizes implemented by the Sea Scallop FMP. The share of larger scallops increased with the share of U10 scallops rising to over 20% during 2006-2008, and to 15% in 2009 and 2010 compared to less than 10% in 2000-2004. The share of 11-20 count scallops increased from 12% in 1999 to 63% in 2008. On the other hand, the share of 30 or more count scallops declined from 30% in 1999 to 1% in 2008 on (Table 4). Larger scallops priced higher than the smaller scallops contributed to the increase in average scallop prices in recent years despite larger landings (Table 5 and Figure 3).

Table 4. Size composition of scallops

FISHYEAR	U10	11 to 20	21 to 30	>30	UNK	Grand Total
1999	16%	12%	28%	33%	12%	100%
2000	7%	20%	42%	21%	10%	100%
2001	3%	23%	52%	10%	13%	100%
2002	5%	14%	66%	4%	11%	100%
2003	6%	21%	56%	3%	13%	100%
2004	8%	45%	39%	1%	8%	100%
2005	13%	58%	21%	2%	7%	100%
2006	23%	50%	19%	1%	7%	100%

2007	24%	52%	12%	4%	7%	100%
2008	23%	52%	19%	1%	4%	100%
2009	15%	62%	21%	0%	3%	100%
2010	15%	63%	19%	0%	2%	100%
2011	9%	84%	5%	1%	1%	100%

*2011 is for months 3 to 5

Table 5. Price of scallop by market category (in 2010 inflation adjusted prices)

FISHYEAR	U10	11 to 20	21 to 30	>30	UNK	All counts
1999	7.76	7.92	7.32	6.41	7.41	7.17
2000	8.64	6.53	5.82	5.91	6.46	6.24
2001	7.25	4.63	4.37	4.53	4.63	4.58
2002	6.61	4.81	4.55	5.30	4.71	4.74
2003	5.76	4.82	4.84	5.42	4.77	4.90
2004	6.94	6.03	5.61	5.86	5.96	5.93
2005	8.77	8.66	8.51	8.39	8.40	8.62
2006	6.44	7.12	7.46	7.40	6.94	7.02
2007	7.20	6.91	6.67	6.16	6.61	6.90
2008	7.32	7.01	6.87	6.70	7.01	7.05
2009	8.12	6.27	6.23	5.94	6.44	6.53
2010	10.46	7.47	8.20	8.49	8.44	8.09

Table 6. Price of scallop by market category and month in 2011 (in current prices)

MONTH	Market category	Scallop landings	Scallop Revenue	Price
1	UNDER 10 COUNT	83851	945209	11.27
	11-20 COUNT	655345	6399586	9.77
	21-30 COUNT	698,883	6,736,834	9.64
	31-40 COUNT	5,346	50,690	9.48
	41-50 COUNT	587	3,851	6.56
	51-60 COUNT	1	8	8.00
	All categories (total)	1,444,013	14,136,178	9.79
2	UNDER 10 COUNT	59332	659060	11.11
	11-20 COUNT	1568534	14781372	9.42
	21-30 COUNT	403,947	3,786,897	9.37
	31-40 COUNT	2,145	18,573	8.66
	All categories (total)	2,033,958	19,245,902	9.46
3	UNDER 10 COUNT	315358	3254175	10.32
	11-20 COUNT	4464618	41156147	9.22
	21-30 COUNT	388,971	3,591,605	9.23
	31-40 COUNT	26,834	229,867	8.57
	41-50 COUNT	701	5,608	8.00
	All categories (total)	5,196,482	48,237,402	9.28
4	UNDER 10 COUNT	655524	6732977	10.27
	11-20 COUNT	4994297	47838350	9.58
	21-30 COUNT	179,743	1,759,917	9.79
	31-40 COUNT	138,761	1,287,911	9.28
	All categories (total)	5,968,325	57,619,155	9.65

5	UNDER 10 COUNT	79272	783710	9.89
	11-20 COUNT	673394	6754642	10.03
	21-30 COUNT	14,196	146,590	10.33
	31-40 COUNT	4,566	44,674	9.78
	All categories (total)	771,428	7,729,616	10.02
Grand Total		15,414,206	146,968,253	9.53

1.1.5 The trends in participation by permit, vessel characteristics and gear type

Table 7 shows the number of limited access vessels by permit category from 1999 to 2010. The fishery is primarily full-time, with a small number of part-time permits. There no occasional permits left in the fishery since 2009 because these were converted to part-time small dredge. The number of full-time vessels has been on the rise since 1999. Of these permits, the majority are dredge vessels, with a small amount of full-time small dredge and full-time trawl vessels. The permit numbers shown in Table 7 include duplicate entries because replacement vessels receive new permit numbers and when a vessel is sold, the new owner would get a new permit number. The unique vessels with right-id numbers are shown in Table 8 for 2008-2010. For example, only 347 out of 362 permits in 2008 belonged to unique vessels. If the number of permits in 1999 fishing year included only the number of unique vessels, this would mean an increase in the number of limited access vessels by 56 vessels (347-291), or by about 20% since 1999.

Table 7. Number of limited access vessels by permit category and gear

Permit category	1999	2000	2001	2002	2003	2004	2005	2006	2007	2008	2009	2010
Full-time	213	220	224	234	238	242	248	255	256	254	259	252
Full-time small dredge	1	3	13	25	39	48	57	59	63	56	55	54
Full-time net boat	16	17	16	16	16	15	19	14	12	11	12	11
Total full-time	230	240	253	275	293	305	324	328	331	321	326	317
Part-time	12	16	14	14	10	4	3	3	2	2	2	2
Part-time small dredge	3	4	6	8	19	26	30	34	35	32	34	34
Part-time trawl	22	20	18	10	8	3	-	-	-	-	-	-
Total part-time	37	40	38	32	37	33	33	37	37	34	37	38
Occasional	4	4	5	4	3	3	1	2	1	1	-	-
Occasional trawl	20	16	19	15	8	5	5	-	-	-	-	-
Total occasional	24	20	24	19	11	8	6	2	1	1	0	0
Total Limited access	291	300	315	326	342	346	363	367	369	356	362	353

Note: The permit numbers above include duplicate entries because replacement vessels receive new permit numbers and when a vessel is sold, the new owner would get a new permit number.

Table 8. Scallop Permits by unique right-id and category by application year

Permit category	2008	2009	2010
Full-time	250	250	250
Full-time small dredge	52	52	52

Full-time net boat	11	11	11
Total full-time	313	313	313
Part-time	2	2	2
Part-time small dredge	31	32	32
Part-time trawl	0	0	0
Total part-time	33	34	34
Occasional	1	0	0
Total Limited access	347	347	347

Since 2001, there has been considerable growth in fishing effort and landings by vessels with general category permits, primarily as a result of resource recovery and higher scallop prices (Table 9 to Table 11). This additional effort was likely a contributing factor to why the FMP has been exceeding the fishing mortality targets.

Table 9. Landings by permit before and after Amendment 11 implementation

FISHYEAR	General Category	Limited Access	Unknown	Grand Total
1994	155,753	15,107,654	1,193,884	16,457,291
1995	126,048	15,676,908	1,077,109	16,880,065
1996	205,298	16,254,229	759,125	17,218,652
1997	288,166	12,339,685	821,314	13,449,165
1998	202,479	12,723,539	677,119	13,603,137
1999	226,887	42,740,919	649,699	43,617,505
2000	428,381	35,318,473	353,840	36,100,694
2001	1,672,371	43,860,659	189,982	45,723,012
2002	1,127,517	48,784,134	130,284	50,041,935
2003	1,662,583	53,085,545	346,720	55,094,848
2004	3,300,533	58,688,370	652,172	62,641,075
2005	7,223,454	46,254,403	186,591	53,664,448
2006	6,866,906	49,129,873	286,369	56,283,148
2007	5,290,005	53,764,919	627,346	59,682,270
2008	4,814,206	46,827,732	848,239	52,490,177
2009	4,665,389	51,276,749	2,036,357	57,978,495
2010	2,633,885	52,913,504	1,364,278	56,911,667

Table 10. Landings by permit before and after Amendment 11 implementation

FISHYEAR	General Category	Limited Access	Unknown	Grand Total
1994	0.95%	91.80%	7.25%	100.00%
1995	0.75%	92.87%	6.38%	100.00%
1996	1.19%	94.40%	4.41%	100.00%
1997	2.14%	91.75%	6.11%	100.00%
1998	1.49%	93.53%	4.98%	100.00%
1999	0.52%	97.99%	1.49%	100.00%
2000	1.19%	97.83%	0.98%	100.00%
2001	3.66%	95.93%	0.42%	100.00%
2002	2.25%	97.49%	0.26%	100.00%
2003	3.02%	96.35%	0.63%	100.00%
2004	5.27%	93.69%	1.04%	100.00%

2005	13.46%	86.19%	0.35%	100.00%
2006	12.20%	87.29%	0.51%	100.00%
2007	8.86%	90.09%	1.05%	100.00%
2008	9.17%	89.21%	1.62%	100.00%
2009	8.05%	88.44%	3.51%	100.00%
2010	4.63%	92.97%	2.40%	100.00%

Amendment 11 implemented a limited entry program for the general category fishery allocating 5% of the total projected scallop catch to the general category vessels qualified for limited access. The main objective of the action was to control capacity and mortality in the general category scallop fishery. There is also a separate limited entry program for general category fishing in the Northern Gulf of Maine. In addition, a separate limited entry incidental catch permit was adopted that will permit vessels to land and sell up to 40 pounds of scallop meat per trip while fishing for other species. During the transition period to the full-implementation of Amendment 11, the general category vessels were allocated 10% of the scallop TAC. Since the full implementation of Amendment 11 provisions did not occur until March 2010, it is too early to assess the impacts this amendment on the ownership patterns in the general category vessels. Table 11 shows, however, that the number of general category permits declined considerably after 2007 as a result of the Amendment 11 provisions. Although not all vessels with general category permits were active in the years preceding 2008, there is no question that the number of vessels (and owners) that hold a limited access general category permit under the Amendment 11 regulations are less than the number of general category vessels that were active prior to 2008 (Table 11).

Table 11. General category permit before and after Amendment 11 implementation

AP_YEAR	General category permit (up to 2008)	Number of permits qualify under Amendment 11 program			Grand Total
		Limited access general category (A)	Limited access NGOM permit (B)	Incidental catch permit (C)	
2000	2263				2263
2001	2378				2378
2002	2512				2512
2003	2574				2574
2004	2827				2827
2005	2950				2950
2006	2712				2712
2007	2493				2493
2008		342	99	277	718
2009		344	127	301	772
2010		333	122	285	740

Table 122. Number of active general category vessels by permit category

FISHYEAR	IFQ	INCI	NGOM	SCG	VMS	Total
2009	228	44	18			290
2010*	179	83	17			279

*Preliminary numbers. Source: Dealer and permit data

1.1.6 Landings by gear type

Table 13 through Table 15 describe scallop landings by limited access vessels by gear type and permit category. These tables are obtained from the dealer and permit data. Most limited access category effort is from vessels using scallop dredges, including small dredges. The number of vessels using scallop trawl gear has decreased continuously and has been at 11 full-time trawl vessels since 2006. In comparison, there has been an increase in the numbers of full-time and part-time small dredge vessels after 2002.

In terms of landings, most scallop landings by the limited access vessels are with dredge gear including the small dredges, with significant amounts also landed by full-time and part-time trawls. Table 15 shows the percent of limited access landings by primary gear and year. About 80% of the scallop pounds are landed by full-time dredge and about 13% landed by full-time small dredge vessels since the 2007 fishing year.

Table 13. Number of active vessels by permit category and gear

FISHYEAR	FT Dredge	PT Dredge	FT SD	PT SD	FT TRW	PT TRW	OC TRW
1994	327	15	7	10	45	31	21
1995	311	15	4	3	55	23	14
1996	298	16	5	9	45	31	7
1997	272	12		7	44	27	7
1998	289	8	NA	NA	34	32	NA
1999	293	14	NA	9	25	30	8
2000	278	21	NA	7	27	30	10
2001	279	24	16	14	28	32	11
2002	253	18	38	10	30	18	9
2003	274	18	49	26	28	8	4
2004	277	6	66	37	27	5	7
2005	308	7	92	49	25		6
2006	310	5	83	58	22		NA
2007	302	5	79	61	16		
2008	263	4	75	54	12		
2009	255	NA	60	38	12		
2010	271	NA	58	38	11		

Note: The numbers include replacement vessels in the same year

Table 14. Scallop landings (lbs.) by limited access vessels by permit category and gear

FISHYEAR	FT Dredge	PT Dredge	FT SD	PT SD	FT TRW	PT TRW	OC TRW
1994	12,729,405	130,920	43,337	7,403	1,591,902	413,968	75,741
1995	13,782,818	212,920	42,944	10,017	1,441,128	139,847	45,545
1996	14,211,552	270,264	28,644	13,336	1,268,170	366,585	93,375
1997	11,079,661	148,742		15,832	850,573	237,763	7,114
1998	9,896,080	84,929	NA	NA	1,194,558	351,722	3,817
1999	19,648,888	303,397	NA	14,680	1,533,002	581,569	16,133
2000	31,969,183	658,551	NA	80,741	1,871,048	710,032	15,226
2001	38,698,661	875,343	732,863	208,142	2,579,856	747,960	17,140
2002	42,254,657	918,534	1,807,975	186,713	2,980,542	601,455	32,026

2003	45,599,018	932,815	3,145,092	521,523	2,612,065	272,668	834
2004	49,117,614	323,389	5,765,756	847,271	2,490,766	125,949	17,387
2005	38,177,586	236,757	4,873,378	1,461,786	1,480,018		14,833
2006	40,836,448	129,339	5,466,942	1,311,340	1,377,394		NA
2007	43,278,114	187,931	7,001,975	1,618,641	1,678,258		
2008	37,675,723	176,223	6,105,504	1,344,668	1,525,614		
2009	41,102,196	NA	6,900,112	1,337,335	1,821,156		
2010	42,473,103	NA	6,707,658	1,774,340	1,786,420		

Table 15. Percentage of scallop landings (lbs.) by limited access vessels by permit category and gear

FISHYEAR	FT Dredge	PT Dredge	FT SD	PT SD	FT TRW	PT TRW	OC TRW
1994	85%	1%	0%	0%	11%	3%	1%
1995	88%	1%	0%	0%	9%	1%	0%
1996	87%	2%	0%	0%	8%	2%	1%
1997	90%	1%	0%	0%	7%	2%	0%
1998	86%	1%	0%	0%	10%	3%	0%
1999	89%	1%	0%	0%	7%	3%	0%
2000	91%	2%	0%	0%	5%	2%	0%
2001	88%	2%	2%	0%	6%	2%	0%
2002	87%	2%	4%	0%	6%	1%	0%
2003	86%	2%	6%	1%	5%	1%	0%
2004	84%	1%	10%	1%	4%	0%	0%
2005	83%	1%	11%	3%	3%	0%	0%
2006	83%	0%	11%	3%	3%	0%	0%
2007	80%	0%	13%	3%	3%	0%	0%
2008	80%	0%	13%	3%	3%	0%	0%
2009	80%	0%	13%	3%	4%	0%	0%
2010	80%	0%	13%	3%	3%	0%	0%

Table 16 through Table 18 describe general category landings by gear type. These tables are generated by VTR data and since not all VTR records include gear information, the number of vessels in these tables will differ from other tables that summarize general category vessels and landings from dealer data. Primary gear is defined as the gear used to land more than 50% of scallop pounds. Most general category effort is and has been from vessels using scallop dredge and other trawl gear. The number of vessels using scallop trawl gear increased through 2006 but has declined in recent years. In terms of landings, most scallop landings under general category are with dredge gear, with significant amounts also landed by scallop trawls and other trawls. Table 17 shows the percent of general category landings by primary gear and year. The percentages of scallop landings with other trawl gear in 2008 and 2009 were the highest they have been since 2001, but still significantly less than dredge.

Table 16. Number of general category vessels by primary gear and fishing year

Year	DREDGE, OTHER	DREDGE, SCALLOP	MISC.	TRAWL, OTHER	TRAWL, SCALLOP
1994	*	33	4	42	*
1995	4	91	5	48	4
1996	7	101	13	49	*

1997	6	118	9	55	
1998	10	100	8	52	*
1999	10	87	*	61	5
2000	7	78	9	91	*
2001	4	122	7	118	6
2002	*	147	*	104	9
2003	6	155	*	116	17
2004	8	218	10	173	34
2005	24	280	*	175	56
2006	28	369	5	151	58
2007	26	280	4	124	30
2008	9	130	5	62	21
2009	8	135	*	57	28
2010	11	102		40	16

* indicates 3 or less vessels
 UNK - value unknown

Table 17. General category scallop landings by primary gear (pounds)

Year	DREDGE, OTHER	DREDGE, SCALLOP	MISC.	TRAWL, OTHER	TRAWL, SCALLOP
1994	*	144,139	260	9,564	*
1995	4,812	501,910	1,146	43,585	11,797
1996	1,352	578,884	3,314	19,460	*
1997	3,253	682,270	3,465	30,227	
1998	6,049	334,930	2,443	19,677	3,750
1999	18,322	236,482	*	17,537	3,970
2000	6,446	303,168	1,411	173,827	8,179
2001	91,939	1,254,153	6,518	404,709	28,276
2002	*	1,266,144	*	74,686	41,977
2003	22,614	1,590,575	484	171,511	196,376
2004	36,260	2,499,393	2,359	422,426	340,921
2005	187,571	4,808,194	*	721,039	885,559
2006	189,786	5,583,477	5,431	399,909	549,745
2007	142,044	4,519,800	724	222,931	398,883
2008	88,761	2,596,790	1,502	525,675	290,179
2009	72,766	2,690,335	*	840,019	376,905
2010	62,650	1,594,659		250,839	172,630

* indicates 3 or less vessels

Table 18. Percentage of general category scallop landings by primary gear

Year	DREDGE, OTHER	DREDGE, SCALLOP	MISC.	TRAWL, OTHER	TRAWL, SCALLOP
1994	0.07%	92.00%	0.17%	6.10%	1.66%

1995	0.85%	89.11%	0.20%	7.74%	2.09%
1996	0.22%	95.74%	0.55%	3.22%	0.27%
1997	0.45%	94.86%	0.48%	4.20%	UKN
1998	1.65%	91.30%	0.67%	5.36%	1.02%
1999	6.62%	85.40%	0.22%	6.33%	1.43%
2000	1.31%	61.49%	0.29%	35.26%	1.66%
2001	5.15%	70.24%	0.37%	22.67%	1.58%
2002	1.56%	90.08%	0.07%	5.31%	2.99%
2003	1.14%	80.27%	0.02%	8.66%	9.91%
2004	1.10%	75.71%	0.07%	12.80%	10.33%
2005	2.84%	72.82%	0.01%	10.92%	13.41%
2006	2.82%	82.98%	0.08%	5.94%	8.17%
2007	2.69%	85.53%	0.01%	4.22%	7.55%
2008	2.53%	74.13%	0.04%	15.01%	8.28%
2009	1.83%	67.58%	0.02%	21.10%	9.47%
2010	3.01%	76.64%	UKN	12.06%	8.30%

1.1.7 Trends in ownership patterns in the scallop fishery

1.1.7.1 Limited access vessels

According to the ownership data for 2008, only 75 out of 346 vessels were owned by one person and/or cooperation (Table 20). The ownership structure 2011 was similar with 71 out of 343 vessels belonged to single boat owners (Table 21). The rest were owned by several individuals and/or different corporations with ownership interest in more than one vessel. This factor makes it difficult assigning each vessel to a specific group of owners. The following tables were generated by selecting a primary owner for each group of vessels that are owned by multiple individuals/entities based on the maximum number of vessels owned by one person/entity. For example, if Mr. A and Mrs. B were listed as the joint owners of the same 5 vessels, but Mrs. B was also listed as an owner of additional two vessels, Mrs. B has been assigned as the primary owner of these 7 vessels. Therefore, each owner group in Table 20 includes more than one person (usually several family members), who collectively own the corresponding number of vessels. For example, in the 16 to 17 category, 4 different sets of owners owned 56 boats in 2008 with each of the 4 sets containing multiple individuals/entities.

Because there were overlaps with owners for multiple vessels, such that two people has ownership interest in 5 boats, primary ownership was assigned to one person in 3 out of 5 boats, and the other person was assigned the 2 remaining boats. Another example includes common ownership of a vessel, with each individual also owning another vessel: Vessel A was owned by Mr. A, but Mr. A also owned another boat, Vessel B together with Mr. B, who owned 5 boats. As a result, vessel B was assigned to Mr. B because he is a 5 boat owner. As a result, Mr. A was classified as a multi-boat owner even though only one vessel's ownership (Vessel A) was assigned to him.

Table 20 shows that only 22% of the limited access vessels were owned by one person, whereas 16% of the vessels are owned by 4 separate entities (group of individuals). The concentration of ownership could be even more than shown in Table 20 because not all family relationships could be taken into account according to the method applied above. The owners of 16 to 17 vessels (4 entities) landed about 16% of scallops in 2008 fishing year, and owners of 6 to 9 vessels (11 separate entities) landed over 21% of scallops in the same fishing year, amounting to over 37% of the scallops landings by these two groups (Table 26). The landings by single boat owners amounted to about 20% of the total fleet landings in 2008.

Table 19. Number of unique owners by plan and category (2011)

Plan	Category	Number of owners	Average number of vessels owned per owner	Number of vessels
SC	FT	100	2.5	248
	OT	2	1.0	2
	FTSD	37	1.4	50
	PTSD	24	1.3	32
	FTTRW	8	1.4	11
SC Total		171	2.0	343
LGC	A	191	1.4	259
	B	74	1.3	93
	C	151	1.8	269
LGC Total		416	1.5	621
Grand Total		587	1.6	964

Table 20. Limited Access vessels -Owner groups according to the number of vessels with ownership interest (2008)

Owner group according to number of vessels owned	Number of owners	Number of vessels	Number of vessels owned as a % of all vessels
1	75	75	22%
2	26	52	15%
3	10	29	8%
4	10	37	11%
5	5	23	7%
6 to 9	11	74	21%
16 to 17	4	56	16%
Grand Total	141	346	100%

Table 21. Limited Access vessels (all categories) - Owner groups according to the number of vessels with ownership interest (2011)

Owner group according to number of vessels owned	Number of owners	Number of vessels	Number of vessels owned as a % of all vessels
1	71	71	21%
2	27	54	16%
3	13	39	11%
4	7	28	8%

5	4	20	6%
6 to 9	11	77	22%
11 to 17	4	54	16%
Grand Total	137	343	100%

Table 22. Limited Access vessels (FT dredge) - Owner groups according to the number of vessels with ownership interest (2011)

Owner group according to number of vessels owned	Number of owners	Number of vessels	Number of vessels owned as a % of all vessels
1	54	54	22%
2	18	36	15%
3	8	24	10%
4	4	16	6%
5	7	35	14%
6 to 9	5	37	15%
11 to 15	4	46	19%
Grand Total	100	248	100%

Table 23. Limited Access vessels (FT Small dredge) - Owner groups according to the number of vessels with ownership interest (2011)

Owner group according to number of vessels owned	Number of owners	Number of vessels	Number of vessels owned as a % of all vessels
1	24	24	48%
2	13	26	52%
Grand Total	37	50	100%

Table 24. Limited Access vessels (FT trawl) - Owner groups according to the number of vessels with ownership interest (2011)

Owner group according to number of vessels owned	Number of owners	Number of vessels	Number of vessels owned as a % of all vessels
1	5	5	45%
2	3	6	55%
Grand Total	8	11	100%

Table 25. Limited Access vessels (PT small dredge) - Owner groups according to the number of vessels with ownership interest (2011)

Owner group according to number of vessels owned	Number of owners	Number of vessels	Number of vessels owned as a % of all vessels
1	17	17	53%
2-3	7	15	47%
Grand Total	24	32	100%

Table 26. Percentage of Scallop landings by limited access vessels according to the number of vessels owned and FISHYEAR

Number of vessels owned in 2008	2005	2006	2007	2008	2009
1	18.34%	20.15%	19.88%	20.09%	19.25%
2	9.81%	10.39%	10.15%	11.70%	11.53%
3	9.13%	9.91%	10.86%	10.67%	10.97%
4	10.75%	9.71%	10.90%	11.39%	11.00%
5	4.35%	5.16%	5.31%	5.53%	6.29%
6-9	21.15%	21.87%	22.18%	21.56%	20.43%
16-17	16.48%	16.02%	16.08%	16.16%	15.60%
Unknown	9.99%	6.78%	4.64%	2.90%	4.93%
Grand Total	100.00%	100.00%	100.00%	100.00%	100.00%

1.1.7.2 Ownership by Limited Access General Category Vessels

Table 27. General category vessels (all-not just ITQ) - Owner groups according to the number of vessels with ownership interest (2011)

Owner group according to number of vessels owned	Number of owners	Number of vessels	Number of vessels owned as a % of all vessels
1	281	75	281
2	54	52	108
3	18	29	54
4	8	37	32
5	2	23	10
6 to 9	5	74	33
10 to 15	8	56	103
Grand Total	376	346	621

Table 28. General category vessels (ITQ – cat A) - Owner groups according to the number of vessels with ownership interest (2011)

Owner group according to number of vessels owned	Number of owners	Number of vessels	Number of vessels owned as a % of all vessels
1	155	155	60%
2	26	52	20%
3	4	12	5%
4	3	12	5%
6 to 9	2	13	5%
10 to 15	1	15	6%
Grand Total	191	259	100%

Table 29. General category vessels (INCI– cat C) - Owner groups according to the number of vessels with ownership interest (2011)

Owner group according to number of vessels owned	Number of owners	Number of vessels	Number of vessels owned as a % of all vessels
1	107	107	40%
2	25	50	19%
3	6	18	7%
4	3	12	4%
5	3	15	6%
6 to 9	3	24	9%
10 to 15	4	43	16%
Grand Total	151	269	100%

Table 30. General category vessels (NGOM– cat B) - Owner groups according to the number of vessels with ownership interest (2011)

Owner group according to number of vessels owned	Number of owners	Number of vessels	Number of vessels owned as a % of all vessels
1	59	59	63%
2	11	22	24%
3	4	12	13%
Grand Total	74	93	100%

1.1.8 Trends in Foreign Trade

One of most significant change in the trend for foreign trade for scallops after 1999 was the striking increase in scallop exports. The increase in landings especially of larger scallops led to a tripling of U.S. exports of scallops from about 5 million pounds in 1999 to about 25 million pounds per year since 2005 (Figure 10).

Figure 1 shows exports from New England and Mid-Atlantic ports combined including fresh, frozen and processed scallops. Although exports include exports of bay, calico or weathervane scallops, it mainly consists of sea scallops. France and other European countries were the main importers of US scallops. The exports from all other states and areas totaled only about \$1 million in 2006 and 2007, and thus were not considered significant. Imports of scallops fluctuated between 45 million pounds and 60 million pounds during the period from 1999 to 2009.

Because of the increase in the value of scallop exports to over \$130 million after 2004, the difference in the value of exported and imported scallops, that is scallop trade deficit, declined considerably (Figure 11). Therefore, rebuilding of scallops as a result of the management of the scallop fishery benefited the nation by reducing the scallop trade deficit from over \$230 million

in 1994 to less than \$80 million in 2009. In 2010, exports were about 25 million lb. and imports were 51.9 million lb. From January to May 2011, exports were 10.9 million lb. and imports were 35 million lb.

Figure 10 - Scallop imports and exports in lb. (by calendar year)

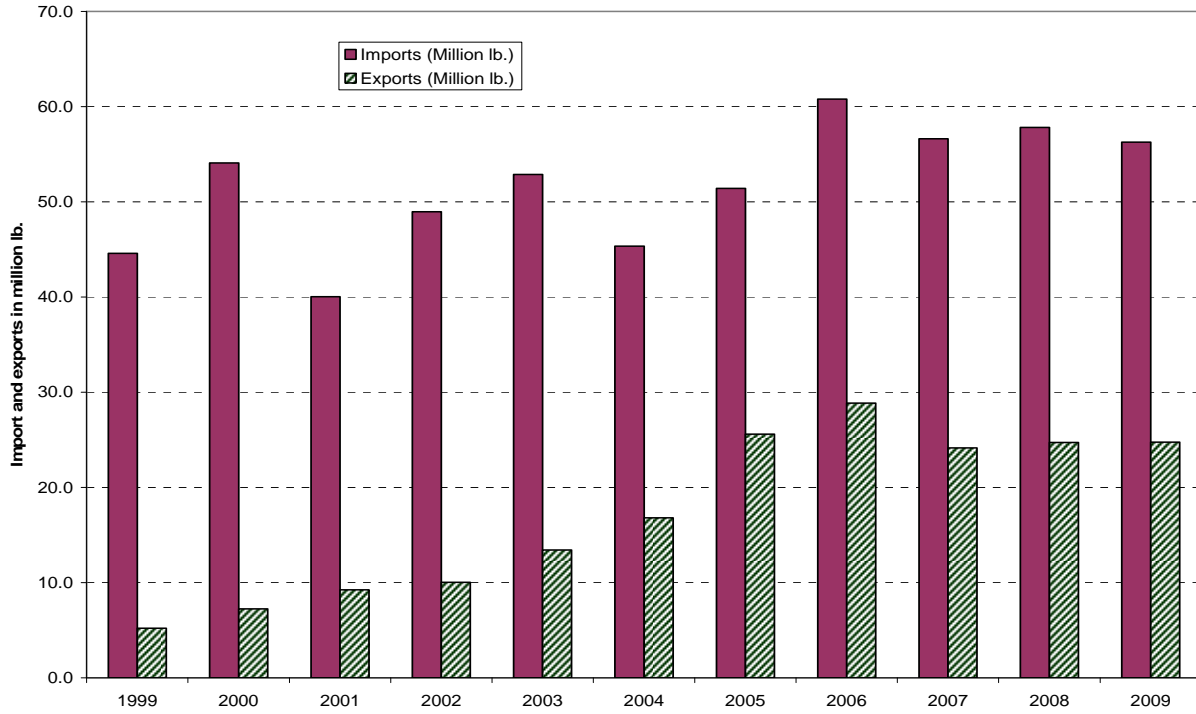
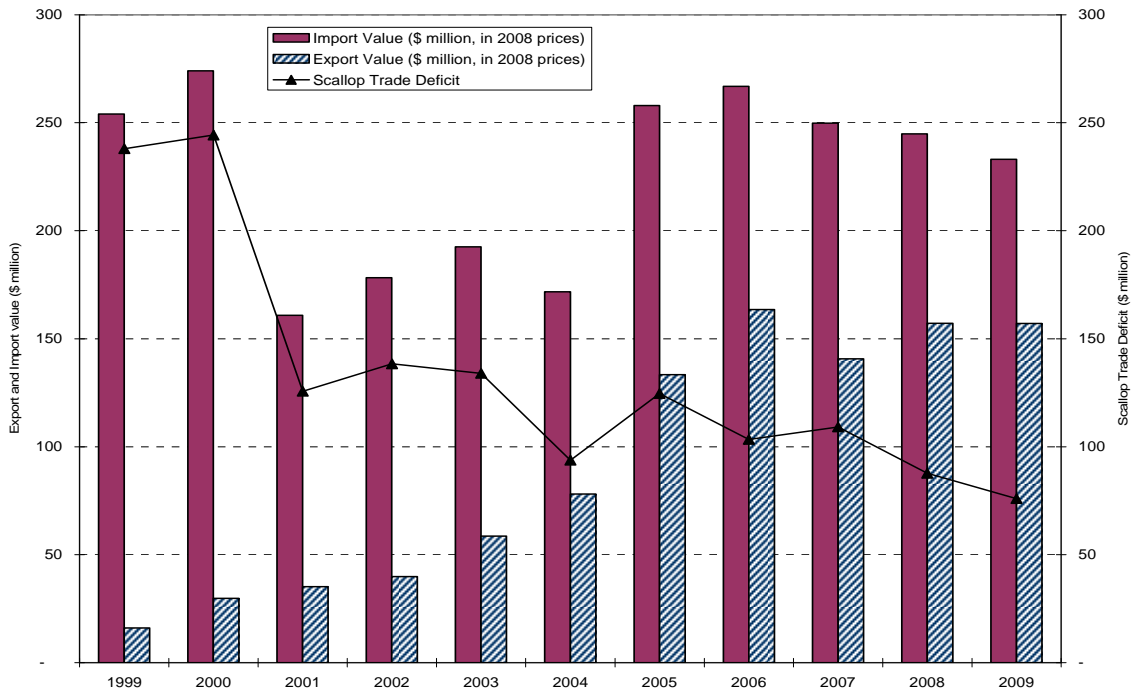


Figure 11. Value of Scallop imports and exports (by calendar year)



1.1.9 Dependence on the Scallop Fishery

Both full-time and part-time limited access vessels had a high dependence on scallops as a source of their income. Full-time limited access vessels had a high dependence on scallops as a source of their income and the majority of the full-time vessels (94%) derived more than 90% of their revenue from the scallop fishery in 2010 (Table 31). Comparatively, part-time limited access vessels were less dependent on the scallop fishery in 2010, with only 46% of part-time vessels earning more than 90% of their revenue from scallops (Table 31).

Table 32 shows that general category permit holders (IFQ and NGOM) are less dependent on scallops compared to vessels with limited access permits. In 2010, only about half (49%) of IFQ permitted vessels earned greater than 50% of their revenue from scallops. Among NGOM permitted vessels, only 31% earned more than 50% of their revenue from scallops in 2010. Scallops still comprise the largest proportion of the revenue for these general category vessels, accounting for 59% - 66% of the revenue for IFQ and NGOM vessels respectively (Table 32). The composition of revenue for the general category vessels are shown in Table 33.

The relative ease with which a vessel is able to switch between fisheries is an indicator of the dependence on any one fishery or species. Table 34 and Table 35, show the number and percentage of scallop vessels with permits from other fishery management plans, while Table 34 to Table 39 show the number scallop vessels that have actual landings of other species. Together, Table 34 through Table 37 describe a limited access fishery where a large percentage of vessels have permits in other fisheries but relatively few vessels actually landing species other than scallops. Alternatively, Table 38 and Table 39 show a general category fishery where a

large percentage of vessels have permits in other fisheries and landings of corresponding species.

Table 31. Dependence of scallop revenue by limited access vessels

Permit Category	Scallop Revenue as % of total	2008		2009		2010	
		number of vessels	%	number of vessels	%	number of vessels	%
FT Vessels	<75%	9	3%	5	2%	7	2%
	75% - 89%	13	4%	19	6%	13	4%
	>=90%	289	93%	286	92%	294	94%
Total		311	100%	310	100%	314	100%
PT vessels	<75%	8	24%	13	38%	10	29%
	75% - 89%	9	27%	5	15%	9	26%
	>=90%	16	48%	16	47%	16	46%
Total		33	100%	34	100%	35	100%

Table 32. Dependence of scallop revenue by limited access general category vessels

	Scallop revenue as % of total	2008		2009		2010	
		number of vessels	%	number of vessels	%	number of vessels	%
IFQ	<10%	93	34%	83	28%	104	40%
	10%-49%	29	11%	35	12%	28	11%
	50%-74%	30	11%	37	13%	21	8%
	75%-89%	20	7%	20	7%	17	7%
	>=90%	101	37%	117	40%	87	34%
	total		273	100%	292	100%	257
NGOM	<10%	62	75%	81	73%	69	69%
	10%-49%	1	1%	3	3%	0	0%
	50%-74%	1	1%	2	2%	2	2%
	75%-89%	0	0%	2	2%	3	3%
	>=90%	19	23%	23	21%	26	26%
	total		83	100%	111	100%	100

Source: Dealer data

Table 33. Composition of Revenue for the Limited Access general category vessels

		2008	2009	2010
LAGC-IFQ	SCALLOP, SEA	\$54,611,430	\$61,830,208	\$63,876,082
		56.6%	60.0%	58.9%
	ANGLER (Monkfish)	\$3,734,651	\$2,361,064	\$2,493,993
		3.9%	2.3%	2.3%

	COD	\$4,898,074	\$4,019,511	\$3,876,726
		5.1%	3.9%	3.6%
	FLOUNDER, SUMMER	\$3,698,632	\$4,785,894	\$5,868,179
		3.8%	4.6%	5.4%
	FLOUNDER, WINTER	\$4,166,803	\$3,824,637	\$3,066,536
		4.3%	3.7%	2.8%
	FLOUNDER, YELLOWTAIL	\$1,690,604	\$1,602,142	\$1,410,653
		1.8%	1.6%	1.3%
	HADDOCK	\$4,651,154	\$5,174,473	\$7,029,055
		4.8%	5.0%	6.5%
	LOBSTER	\$2,786,921	\$2,186,324	\$2,221,060
		2.9%	2.1%	2.0%
	QUAHOG, OCEAN	\$3,791,416	\$3,353,203	\$4,599,680
		3.9%	3.3%	4.2%
	Total Landings	\$96,518,981	\$103,000,207	\$108,390,818
		100.0%	100.0%	100.0%
LAGC-NGO	SCALLOP, SEA	\$22,566,591	\$28,053,031	\$38,543,812
		65.7%	59.8%	66.4%
	ANGLER(Monkfish)	\$1,716,043	\$1,763,163	\$2,038,291
		5.0%	3.8%	3.5%
	COD	\$3,124,253	\$3,738,593	\$4,022,694
		9.1%	8.0%	6.9%
	FLOUNDER, YELLOWTAIL	\$349,864	\$398,184	\$322,207
		1.0%	0.8%	0.6%
	HADDOCK	\$447,007	\$553,169	\$483,412
		1.3%	1.2%	0.8%
	HERRING, ATLANTIC	\$4,014	\$2,550,621	\$2,104,231
		0.0%	5.4%	3.6%
	LOBSTER	\$1,898,778	\$1,709,428	\$1,636,627
		5.5%	3.6%	2.8%
	POLLOCK	\$1,175,606	\$1,673,292	\$1,261,349
		3.4%	3.6%	2.2%
	Total Landings	\$34,368,969	\$46,921,191	\$58,059,974
		100.0%	100.0%	100.0%

Table 34. Other Fishery Management Plan permits held FY 2010, by scallop limited access boats.

Plan	Desc.	Count of PERMIT	
BLU	Bluefish	321	92%
BSB	Black Sea Bass	143	41%
DOG	Dogfish	336	96%
FLS	Summer Flounder	298	85%
HRG	Herring	287	82%
LO	Lobster	227	65%
MNK	Monkfish	344	98%
MUL	Multispecies	334	95%
OQ	Ocean Quahog	288	82%
RCB	Red Crab	273	78%
SC	Scallop LA	350	100%
LGC	Scallop LAGC	182	52%
SCP	Scup	135	39%
SF	Surf Clam	285	81%
SKT	Skate	314	90%
SMB	Squid/Mackerel/Butterfish	329	94%
TLF	Tilefish	304	87%

Table 35. Other Fishery Management Plan permits held FYI 2009, by scallop LAGC boats, separated by permit category.

Plan	Desc.	A	%	B	%	C	%
BLU	Bluefish	285	86%	111	91%	253	88%
BSB	Black Sea Bass	112	34%	33	27%	143	50%
DOG	Dogfish	287	86%	115	94%	270	94%
FLS	Summer Flounder	175	53%	51	42%	214	75%
HRG	Herring	254	76%	113	93%	243	85%
LGC	Scallop LAGC	333	100%	122	100%	286	100%
LO	Lobster	183	55%	98	80%	205	72%
MNK	Monkfish	300	90%	115	94%	273	95%
MUL	Multispecies	270	81%	115	94%	263	92%
OQ	Ocean Quahog	202	61%	65	53%	219	77%
RCB	Red Crab	223	67%	87	71%	226	79%
SC	Scallop LA	40	12%	28	23%	114	40%
SCP	Scup	118	35%	39	32%	151	53%
SF	Surf Clam	196	59%	67	55%	222	78%
SKT	Skate	286	86%	108	89%	257	90%
SMB	Squid/Mackerel/Butterfish	274	82%	109	89%	260	91%
TLF	Tilefish	249	75%	94	77%	254	89%

Table 36. Number of Full-time vessels with landings of corresponding species (includes fisheries with 5 or more vessels participating)

Species	2005	2006	2007	2008	2009	2010
ANGLER (Monkfish)	251	257	274	271	248	236
BLUEFISH	28	25	23	19	24	24
BUTTERFISH	6	8	9	17	13	12
COD	15	12	7	8	7	9
CROAKER, ATLANTIC	6	6	7	11	11	9
FLOUNDER, AM. PLAICE	15	10	5	6	8	7
FLOUNDER, SUMMER	80	83	76	74	68	82
FLOUNDER, WINTER	28	28	37	26	15	14
FLOUNDER, WITCH	19	18	12	10	15	9
FLOUNDER, YELLOWTAIL	24	15	15	11	18	52
HADDOCK	14	10	6	7	6	7
LOBSTER	24	12	12	11	10	15
SCALLOP, SEA	305	308	310	307	308	314
SCUP	25	19	15	16	20	31
SEA BASS, BLACK	30	26	21	22	24	27
SKATES(RACK)	12	8	5	7	5	10
SQUID (LOLIGO)	33	29	26	22	30	24
WEAKFISH, SQUETEAGUE	10	14	12	15	12	13

Table 37. Number of Part-time and occasional vessels with landings of corresponding species (includes fisheries with 5 or more vessels participating)

Row Labels	2005	2006	2007	2008	2009	2010
ANGLER	29	39	30	31	24	30
BLUEFISH	12	16	14	11	16	15
BUTTERFISH	7	7	7	8	5	5
CROAKER, ATLANTIC	6	6	10	4	6	5
EEL, CONGER	3	3	4	5	4	6
FLOUNDER, SUMMER	25	28	24	23	22	24
FLOUNDER, YELLOWTAIL	3	3	1	2	3	6
HAKE, SILVER	5	5	6	6	5	5
MACKEREL, ATLANTIC	6	7	6	4	6	8
MENHADEN	1	3	3	2	1	5
SCALLOP, SEA	32	40	33	35	32	35
SCUP	16	12	12	11	10	17
SEA BASS, BLACK	20	16	18	17	16	19
SHRIMP,BROWN	1	3	3		6	6
SQUID (ILLEX)	10	3	1	1	6	8
SQUID (LOLIGO)	19	17	19	11	16	11

TILEFISH, GOLDEN	3	2	2	3	3	8
WEAKFISH, SQUETEAGUE	5	10	10	8	8	6
WHITING, KING	3	6	10	3	6	9

Table 38. Number of LAGC-IFQ vessels with landings of corresponding species (includes fisheries with 10 or more vessels participating in 2010)

Species	2008	2009	2010
ANGLER	212	225	196
SCALLOP, SEA	231	245	192
FLOUNDER, SUMMER	122	128	126
BLUEFISH	60	85	78
LOBSTER	88	81	77
COD	83	79	73
FLOUNDER, YELLOWTAIL	80	80	72
SKATES(RACK)	78	78	70
SQUID (LOLIGO)	53	72	66
FLOUNDER, WITCH	78	70	65
SEA BASS, BLACK	58	66	65
SCUP	47	50	61
FLOUNDER, WINTER	93	79	60
HADDOCK	69	64	55
FLOUNDER, AM. PLAICE	68	69	54
POLLOCK	62	58	53
HAKE, SILVER	51	55	51
BUTTERFISH	44	59	49
HAKE, WHITE	57	51	46
SKATE, WINTER(BIG)	32	44	46
DOGFISH SPINY	31	61	45
REDFISH	40	42	38
DOGFISH SMOOTH	23	39	35
WEAKFISH, SQUETEAGUE	40	46	33
HAKE, RED	27	29	32
WHITING, KING	9	30	30
CUSK	30	36	28
HALIBUT, ATLANTIC	39	38	27
MACKEREL, ATLANTIC	23	33	27
CROAKER, ATLANTIC	17	41	25
SHRIMP,BROWN	1	15	23
TILEFISH, GOLDEN	15	12	22
BASS, STRIPED	3	15	21
WOLFFISHES	48	41	20
EEL, CONGER	17	16	18
WHELK, CHANNELED	12	14	17

FLOUNDER, SOUTHERN	2	11	17
HERRING, ATLANTIC	11	13	16
SEA ROBINS	12	18	15
JOHN DORY	12	12	14
SHRIMP (PANDALID)	9	9	12
OTHER SHELLFISH	1	11	12
WHELK, KNOBBED	8	8	11
TILEFISH, BLUELINE	5	5	11
TUNA, BLUEFIN	5	7	11
HARVEST FISH	1	11	11
SQUIDS (NS)			11
TAUTOG	14	10	10
SHARK, THRESHER	5	11	10
SPOT	5	12	10
TRIGGERFISH	5	13	10
SQUID (ILLEX)	4	2	10

Table 39. Number of LAGC-NGOM vessels with landings of corresponding species (includes fisheries with 10 or more vessels participating in 2010)

	2008	2009	2010
ANGLER	69	83	72
COD	52	62	57
FLOUNDER, AM. PLAICE	45	58	51
FLOUNDER, YELLOWTAIL	38	49	50
POLLOCK	48	55	50
FLOUNDER, WITCH	48	58	46
HADDOCK	49	56	46
FLOUNDER, WINTER	40	49	44
HAKE, WHITE	45	51	43
REDFISH	41	48	42
LOBSTER	48	47	38
SCALLOP, SEA	23	37	36
SKATES(RACK)	26	31	32
HAKE, SILVER	24	37	30
CUSK	34	38	28
DOGFISH SPINY	24	35	26
BLUEFISH	14	28	25
SHRIMP (PANDALID)	16	18	25
WOLFFISHES	45	48	23
HALIBUT, ATLANTIC	19	27	21
FLOUNDER, SUMMER	6	21	18
SEA BASS, BLACK	6	16	17
SCUP	6	16	15
SQUID (LOLIGO)	9	18	15
MACKEREL, ATLANTIC	12	20	14
BUTTERFISH	5	11	10

1.1.10 Trends in scallop landings by port

The landed value of scallops by port landing fluctuated from 1994 through 2010 for many ports. During the past five years, five ports have consistently brought in the most landed value: New Bedford, MA; Cape May, NJ; Newport News, VA; Barnegat Light/Long Beach, NJ, and Seaford, VA (Table 40). In addition to bringing in the most landed value, in 1994 scallop landings represented more than 37% of the total landed value for New Bedford, MA and Cape May, NJ, and more than 65% of the total landed value for Newport News and Barnegat Light/Long Beach, NJ . This increased in 2010 to 84% and 87% for New Bedford, MA and Cape May, NJ, respectively, and 97% and 90% for Newport News and Barnegat Light/Long Beach, NJ, respectively. Collectively, 2010 has the highest landed value of scallops since 2005.

75% of ports saw an increase in the percentage of landed scallop value to total landed value in 2010 compared to 2009 (Table 41).

The largest numbers of permitted limited access scallop vessels are currently in the ports of New Bedford, MA and Cape May, NJ, which represent 38% and 19% of the total, respectively (Table 42). Of the 349 permitted limited access vessels in 2010, 199 originate from New Bedford, MA and Cape May, NJ (Table 43). In addition to having the greatest number of permitted limited access scallop vessels, New Bedford, MA also has the greatest number of general category scallop vessels. Gloucester, MA, Boston, MA, and Point Judith, RI, also have high numbers of general category scallop vessels (Table 44). These major ports can also be described by the characteristics of the vessels that hail from each port.

Table 45 shows that on average limited access vessels are larger, by length and weight, than their general category counterparts.

Table 40. Landed value of scallops (in thousands of dollars) by port of landing, FY 1994-2010

State	City/town	1994	1995	1996	1997	1998	1999	2000	2001	2002	2003	2004	2005	2006	2007	2008	2009	2010
MA	NEW BEDFORD	30928	36541	48436	45399	34685	70554	88403	80356	95759	228247	326456	412855	210481	210428	171652	180550	236379
NJ	CAPE MAY	9120	8853	8639	6945	5536	9721	14041	18609	20237	69998	92042	71045	21608	45485	54689	50557	63936
VA	NEWPORT NEWS	9134	11825	13457	11148	11274	15171	22958	25535	30493	80852	87736	62832	22708	33362	36307	33418	42565
NJ	BARNEGAT LIGHT/LONG BEACH	2653	2727	2942	2777	2341	3941	6719	6751	8071	22685	32402	36969	16467	16662	17275	16122	20113
VA	SEAFORD	0	0	0	5553	4543	6513	11168	10465	11841	29283	33547	27900	10865	14382	13783	13087	15915
MA	FAIRHAVEN	0	0	0	0	0	0	0	0	0	0	5084	15161	10089	8892	9166	10943	11492
NJ	POINT PLEASANT	314	528	1324	2194	1577	1854	3784	3197	3529	7180	9914	14215	7512	8725	8106	9424	10598
VA	HAMPTON	12357	7579	6346	3258	4557	5084	8289	9195	13802	37456	33758	23945	9178	15513	13386	12880	10354
CT	NEW LONDON	0	0	0	0	0	0	0	0	0	0	0	0	0	10	3456	4918	7699
CT	STONINGTON	27	19	262	227	153	10	11	40	78	824	1159	0	0	1199	5130	4121	6487
NJ	AVALON	0	0	0	0	0	0	0	0	0	0	1063	2520	1563	3468	2808	3529	5230
NJ	WILDWOOD	7	14	1	0	3	0	119	1246	2056	5183	7317	6144	2113	3690	3836	3284	5001
NJ	OTHER CAPE MAY	0	0	0	0	0	0	0	0	14	2	15	810	825	104	276	1391	4135
NY	MONTAUK	0	0	1	0	0	6	6	7	0	431	1750	3117	1846	2165	1307	1389	2541
MA	CHATHAM	0	0	0	0	0	0	64	508	104	2068	4696	5855	3123	2036	1711	782	1992
RI	POINT JUDITH	1	57	2	7	1	242	734	596	81	845	5142	11917	7348	2834	1371	765	1828
MD	OCEAN CITY	6	16	38	1	0	6	88	55	67	467	3865	9581	5637	2791	3516	2767	1229
VA	CHINCOTEAGUE	2	0	0	0	1	7	210	803	1107	5596	13924	18332	7129	1153	489	791	1177
NJ	ATLANTIC CITY	14	1	0	0	1	0	0	9	0	82	1650	3502	2037	2699	1518	1205	939
NY	HAMPTON BAYS	3	5	5	22	6	53	417	452	94	407	1638	2529	844	421	574	799	732
MA	PROVINCETOWN	39	23	91	97	114	55	119	967	501	985	2124	2624	1018	584	313	382	646
MA	BARNSTABLE	0	0	0	0	0	0	0	0	0	29	144	677	606	326	31	99	360
NJ	OTHER ATLANTIC	387	0	0	0	0	0	0	0	0	0	132	960	871	1017	539	453	347
MA	NANTUCKET	5	0	8	1	1	0	113	0	0	31	292	456	172	190	129	78	340
MA	GLOUCESTER	1	7	232	351	102	154	1008	1510	694	1017	1417	1823	778	482	330	201	338
RI	NORTH KINGSTOWN	0	0	0	0	0	0	0	0	1	0	0	0	0	0	0	0	308
NJ	BRIELLE	0	0	0	0	0	0	0	0	0	0	109	109	23	37	69	29	299
NY	POINT LOOKOUT	0	0	0	0	0	0	0	0	0	17	39	27	1	1075	2940	2375	198
NC	LOWLAND	0	0	0	0	0	0	0	37	12	16	20	8	3	191	0	3	118

MA	TRURO	0	0	0	0	0	0	0	0	0	0	1	1	0	0	1	0	104
NC	ENGELHARD	0	0	0	0	0	0	2	56	0	146	134	449	311	709	0	809	102
MA	SANDWICH	21	34	282	120	229	195	155	201	248	340	347	502	375	655	294	63	100
Total Scallop landings		74102	80226	92907	82059	67918	116586	162229	165216	193522	500736	683599	765591	361316	389722	358307	360463	454355

Table 41. Percentage of landed value of scallops to total landed value by port of landing, FY 1994-2010

State	City/town	1994	1995	1996	1997	1998	1999	2000	2001	2002	2003	2004	2005	2006	2007	2008	2009	2010
MA	NEW BEDFORD	43.64%	46.13%	50.79%	48.81%	40.40%	57.56%	61.74%	56.78%	61.48%	66.39%	73.76%	78.76%	79.67%	78.27%	75.20%	80.70%	83.76%
NJ	CAPE MAY	37.02%	38.41%	40.64%	33.67%	24.96%	45.84%	61.85%	71.75%	72.61%	79.55%	81.95%	80.95%	73.60%	81.54%	80.87%	84.93%	87.06%
VA	NEWPORT NEWS	81.89%	83.92%	89.06%	87.43%	85.63%	88.92%	94.86%	96.02%	95.71%	96.14%	97.31%	96.55%	93.73%	94.12%	95.63%	96.72%	97.02%
NJ	BARNEGAT LIGHT/LONG BEACH	67.68%	58.52%	61.16%	53.92%	42.00%	36.32%	51.96%	48.43%	58.10%	66.60%	75.59%	77.35%	73.17%	70.12%	75.52%	91.25%	89.74%
VA	SEAFORD				94.92%	94.40%	98.09%	99.28%	99.70%	99.56%	99.72%	99.79%	99.69%	99.43%	99.40%	99.57%	99.75%	99.85%
MA	FAIRHAVEN									5.06%	0.00%	69.11%	89.94%	97.45%	98.71%	94.68%	97.50%	96.02%
NJ	POINT PLEASANT	2.58%	7.59%	15.80%	20.82%	13.56%	14.91%	32.01%	24.30%	19.37%	20.73%	29.60%	39.52%	35.29%	38.95%	39.53%	55.79%	54.26%
VA	HAMPTON	81.08%	76.90%	76.97%	67.85%	68.23%	74.80%	86.62%	85.07%	89.41%	88.32%	87.70%	86.40%	82.80%	90.44%	89.91%	87.04%	84.79%
CT	NEW LONDON								0.00%	0.00%	0.00%				3.03%	79.44%	98.92%	98.79%
CT	STONINGTON	8.60%	15.87%	42.46%	64.58%	47.90%	5.91%	1.97%	4.25%	13.07%	33.82%	47.38%	0.00%	0.00%	45.23%	49.55%	81.32%	84.67%
NJ	AVALON										0.00%	99.16%	99.13%	98.76%	98.52%	98.79%	99.50%	99.81%
NJ	WILDWOOD	0.17%	0.28%	0.01%	0.00%	0.09%	0.00%	2.64%	20.91%	32.31%	42.02%	60.74%	78.34%	75.44%	90.59%	96.33%	99.00%	99.28%
NJ	OTHER CAPE MAY			0.00%						100.00%	%	50.03%	14.57%	83.86%	91.89%	35.11%	85.85%	99.96%
NY	MONTAUK	0.00%	0.00%	0.02%	0.00%	0.00%	0.06%	0.07%	0.06%	0.00%	2.52%	8.08%	12.62%	14.59%	16.72%	11.13%	33.84%	48.61%
MA	CHATHAM	0.00%	0.00%	0.00%	0.00%	0.00%	0.00%	0.95%	7.55%	1.76%	13.89%	25.11%	26.69%	28.13%	19.90%	18.35%	51.58%	74.48%
RI	POINT JUDITH	0.01%	0.21%	0.01%	0.02%	0.00%	0.75%	2.97%	2.71%	0.38%	2.10%	10.06%	18.79%	19.95%	9.92%	4.88%	4.89%	11.06%
MD	OCEAN CITY	0.18%	0.45%	0.94%	0.02%	0.00%	0.19%	2.20%	1.32%	1.14%	4.78%	25.45%	45.86%	48.34%	27.46%	34.54%	35.33%	18.83%
VA	CHINCOTEAGUE	0.35%	0.00%	0.03%	0.00%	0.08%	0.42%	12.79%	40.85%	40.20%	56.28%	74.54%	80.30%	78.39%	31.77%	22.98%	52.41%	53.91%
NJ	ATLANTIC CITY	0.18%	0.01%	0.00%	0.00%	0.02%	0.00%	0.00%	0.04%	0.00%	0.23%	5.05%	8.90%	8.39%	9.55%	6.44%	7.76%	8.54%
NY	HAMPTON BAYS	0.23%	0.09%	0.10%	0.34%	0.09%	0.71%	4.78%	5.95%	1.30%	3.96%	15.77%	22.84%	15.28%	8.93%	14.56%	31.89%	32.23%
MA	PROVINCETOWN	2.05%	1.49%	5.10%	5.00%	4.80%	1.92%	5.33%	31.06%	20.95%	29.10%	40.18%	48.35%	48.72%	36.56%	21.98%	33.55%	44.49%
MA	BARNSTABLE							0.00%			69.62%	67.22%	80.86%	86.46%	83.21%	13.49%	98.50%	99.76%
NJ	OTHER ATLANTIC	97.80%				0.00%	0.00%			0.00%	0.00%	35.31%	70.29%	94.62%	91.23%	91.96%	98.02%	98.27%
MA	NANTUCKET	11.62%	0.87%	3.42%	0.55%	1.43%	0.00%	47.83%	0.06%	0.03%	5.26%	26.62%	29.33%	19.26%	32.04%	30.36%	49.18%	69.17%
MA	GLOUCESTER	0.00%	0.04%	1.42%	2.07%	0.45%	0.68%	4.15%	5.46%	2.61%	2.03%	2.29%	2.62%	2.06%	1.21%	0.79%	1.52%	2.36%
RI	NORTH KINGSTOWN	0.00%	0.00%	0.00%	0.00%	0.00%	0.00%	0.00%	0.00%	0.07%	0.00%	0.00%	0.00%	0.00%	0.00%	0.00%	0.00%	12.98%
NJ	BRIELLE										0.00%	99.77%	100.00%	99.73%	65.00%	66.14%	%	99.70%
NY	POINT LOOKOUT							0.00%	0.00%	4.20%	3.74%	1.80%	0.15%	61.67%	82.49%	85.68%	14.90%	
NC	LOWLAND				0.00%	0.00%	0.00%	0.02%	29.59%	17.07%	30.65%	9.16%	3.48%	7.54%	%	0.00%	2.49%	33.26%

MA	TRURO											66.53%	66.53%			100.00%	100.00%	
NC	ENGELHARD			0.00%	0.00%	0.00%	0.00%	0.07%	4.83%	0.02%	6.00%	4.57%	12.04%	11.09%	18.53%	0.00%	37.34%	5.42%
MA	SANDWICH	2.74%	5.47%	32.95%	8.94%	21.02%	11.59%	9.94%	13.55%	16.13%	12.48%	10.69%	9.26%	14.38%	37.43%	24.10%	20.57%	52.19%

Table 42. Landed Value of scallops, linked to Vessel Homeport, ranked by fishing year 2010. (in \$1000s)

State	Home Port	1994	1995	1996	1997	1998	1999	2000	2001	2002	2003	2004	2005	2006	2007	2008	2009	2010
MA	NEW BEDFORD	2213	2542	3083	2622	2172	3893	5529	6165	7338	18015	25006	28997	14135	15213	14194	14797	18943
		3	9	8	5	1	9	7	6	1	3	7	0	9	6	2	0	8
NJ	CAPE MAY	5293	5888	6023	6863	4802	9442	1499	1577	2111			11319					
								2	5	0	65505	92674	1	56039	69181	59509	57419	75466
								1243	1408	1632								
VA	NEWPORT NEWS	1840	2250	2547	3263	3495	9017	8	9	7	36645	46127	47935	20803	21909	18929	17291	23028
NJ	BARNEGAT LIGHT	2016	2363	2607	2108	2024	3704	6055	6390	7175	18616	26409	32653	15498	16276	16044	16335	19685
NC	NEW BERN	408	186	606	249	837	2322	2650	3292	4235	13082	14250	15563	8319	12113	10785	11657	13246
		1480	1581	1623	1409	1097	1476	1801	1428	1656								
VA	NORFOLK	3	8	4	3	0	5	5	7	3	37624	40418	25484	11111	12474	11390	11567	12908
NJ	POINT PLEASANT	13	151	235	298	183	338	1308	1399	1499	3586	5378	9067	4928	4137	5043	5947	8885
CT	NEW LONDON	0	0	0	0	0	0	45	0	0	796	9	3907	4389	3142	5799	6426	8686
				1016														
MA	BOSTON	7663	8675	1	6781	4877	6903	6878	6095	8123	18404	14899	16389	7781	7928	5784	6701	8662
NC	WANCHESE	46	14	3	1	485	1	816	2769	3378	10287	12132	11884	5076	7053	6560	7290	7613
								1031										
MA	FAIRHAVEN	2070	2270	3362	3061	3356	5882	4	6012	5842	12723	15735	16654	7406	6344	4583	5267	7104
VA	SEAFORD	235	239	0	0	0	0	0	383	2399	6774	8211	8679	2693	5540	4603	5395	6957
CT	STONINGTON	0	0	0	0	0	0	1	698	1004	1661	3892	94	59	464	4337	4256	6678
VA	HAMPTON	4107	4336	3836	3014	2602	3704	4998	4103	4318	8993	14449	8091	5424	5213	4030	4898	6254
NC	BEAUFORT	0	0	0	0	0	0	0	20	6	326	2358	3040	847	1483	2240	5565	5690
PA	PHILADELPHIA	2411	2262	2570	1438	979	1929	2857	3446	3319	9667	13625	10968	4862	5004	4219	4980	5105
NC	LOWLAND	6	120	445	0	117	963	1466	1786	2176	6281	9946	10136	4443	4773	4692	3589	4415
NJ	ATLANTIC CITY	18	0	0	0	0	0	0	58	0	14	1734	6011	3539	3932	3126	2678	3685
RI	POINT JUDITH	2	2	0	8	3	182	1633	283	12	187	1394	5473	3258	2265	842	1122	2716
NY	MONTAUK	0	0	0	0	0	2	42	19	6	220	625	1687	254	2332	2230	2815	2609
CT	ESSEX	0	0	0	0	0	0	0	0	0	0	0	0	0	1	1028	1066	2328
FL	CAPE CANAVERAL	558	503	418	452	353	723	846	954	1223	3707	5705	5445	2445	2260	2441	2268	2308
VA	CARROLLTON	91	363	489	403	396	1049	1314	1106	1386	3654	4480	4228	1853	2217	1868	2003	2268
MA	CHATHAM	0	0	0	0	0	0	0	296	38	558	1307	2135	1243	1483	854	1098	1782

MA	BEDFORD	556	571	886	798	630	662	857	1113	970	2151	2494	2790	1309	1436	1212	1220	1622
NJ	MANAHAWKIN	0	0	0	0	0	0	0	0	0	0	0	2448	1012	1008	1069	1014	1521
NC	BAYBORO	1	87	50	44	168	335	328	671	998	3547	4216	1273	1235	1643	1260	1327	1441
VA	SUFFOLK	0	0	0	0	0	0	0	0	0	0	0	0	0	1120	981	901	1383
NC	SWAN QUARTER	0	0	0	0	0	427	599	405	580	2105	3683	4765	871	658	404	660	1382
ME	BASS HARBOR	15	115	190	271	188	339	520	299	550	1839	2287	2302	1066	927	991	1148	1295
NJ	WILDWOOD	4	5	149	196	149	188	303	253	229	1298	2073	1586	376	1094	1042	1263	1272
ME	SOUTHWEST HARBOR POINT PLEASANT BEACH	168	405	517	462	275	763	1086	590	529	1591	1612	3082	1222	1182	1038	778	1266
NJ	BEACH	0	0	0	0	0	0	0	0	7	1	136	231	720	1584	2725	1632	1205
MA	HYANNIS	1642	1400	947	632	374	333	849	788	845	1811	3111	4024	2259	1968	1973	1947	1184
FL	JACKSONVILLE	203	0	0	202	262	331	544	504	373	756	2079	2451	1046	993	853	961	1096
MA	PROVINCETOWN	11	19	61	82	26	52	79	620	278	455	1236	2254	936	638	247	753	1063
NC	AURORA	348	333	433	346	425	652	201	891	779	3378	4123	3674	2017	1196	984	0	824
NC	SWANQUARTER	0	0	67	150	165	167	228	0	0	2	139	180	43	0	0	666	812
NY	NEW YORK	1165	826	954	1228	839	1109	1255	1171	1471	2757	5187	5310	2201	2034	599	991	804
FL	KEY WEST	0	0	0	1	0	0	0	0	377	1127	1309	1040	311	940	867	824	801
NC	NEWPORT	1	178	121	155	13	261	248	211	161	1138	1475	1769	902	874	956	874	731
ME	OWLS HEAD	12	205	76	0	24	9	75	516	395	419	884	1298	487	239	745	598	657
MA	GLOUCESTER	171	11	246	345	227	934	636	590	685	2252	2865	3913	1660	1389	1455	333	585
NC	ORIENTAL	385	402	96	315	525	1108	1063	1001	1200	4439	8184	9519	3714	4373	3151	1074	489
NJ	OCEAN CITY	0	0	0	0	0	0	0	0	14	16	111	164	32	57	912	281	433
MA	MANOMET	0	0	0	0	0	0	0	0	0	0	0	0	36	387	220	433	415
NY	SHINNECOCK	0	2	16	0	0	0	0	45	23	127	477	621	127	228	464	578	377
MA	HULL	0	0	0	0	0	0	0	13	15	98	124	188	152	138	278	117	374
NC	BELHAVEN	1	0	0	0	0	0	1	229	320	1109	1565	2161	714	134	240	445	370
MA	BARNSTABLE	0	0	0	0	0	0	0	0	0	1	103	571	409	506	191	235	351
MD	NANTICOKE	0	0	0	0	0	0	0	0	0	0	334	559	271	290	327	245	329
ME	STONINGTON	22	12	176	202	144	28	11	104	146	352	962	1094	325	342	589	120	324
MA	WESTPORT POINT	0	0	0	0	0	0	0	0	0	3	186	374	191	254	250	254	292
NJ	TOMS RIVER	0	0	0	0	0	0	0	152	223	470	666	24	41	501	344	259	290

The largest numbers of permitted limited access scallop vessels currently are in the ports of New Bedford, MA and Cape May, NJ, which represent 37% and 19% of the total, respectively (**Table 43**). Of the 348 permitted limited access vessels in 2009, 203 originate from New Bedford, MA and Cape May, NJ. Although the number of permitted limited access vessels has only increased from 308 in 1994 to a peak of 380 in 2005 and New Bedford has always had the largest number of permitted limited access vessels, the port with the next greatest number of contributors shifted from Norfolk, VA (18% in 1994 to 3% in 2009) to Cape May, NJ (9% in 1994 to 19% in 2009).

In addition to having the greatest number of permitted limited access scallop vessels, New Bedford, MA also has the greatest number of general category scallop vessels. Cape May, NJ, Barnegat Light, NJ, and Gloucester, MA also have high numbers of general category scallop vessels. Generally, ports that had a higher number of general category scallop vessels from 1994-2004, such as New Bedford, Gloucester, and Chatham, have seen a significant decrease in these vessels in recent years.

Although the largest increases in general category vessels have been from ports in NC, they have increased from 1 or no permitted general category scallop vessels to only about 6 or 7, which results in a 600-700% increase. Regardless of this increase, these ports only had a landed value for scallops of \$311,000 or less. Other ports that saw an increase of 300% in general category vessels, such as Chincoteague, VA and Barnegat Light, NJ had a landed value of \$7.3 million and \$16.9 million, respectively. Although some ports such as New Bedford and Gloucester have experienced a decline in the number of general category scallop vessels, the simultaneous increase in permitted limited access boats has aided to increase the landed value of scallops in those ports to \$202.5 million and \$812,000 respectively. As

Table 45 shows, the general category fleet is not homogeneous, but varies over space and time, with some ports showing a general category fleet that mirrors limited access vessels in size (for example Atlantic City NJ), and others showing a fleet of smaller-scale vessels (such as Fairhaven, MA). Thus impacts to the general category fishery as a whole can be experienced differently in different ports.

Table 43. Permitted limited access scallop vessels, by homeport, 1994-2010.

State	Homeport	1994	1995	1996	1997	1998	1999	2000	2001	2002	2003	2004	2005	2006	2007	2008	2009	2010
MA	NEW BEDFORD	70	67	63	61	63	71	75	90	96	101	110	124	130	131	127	133	133
NJ	CAPE MAY	22	23	24	25	26	28	33	36	42	50	52	67	66	70	66	66	66
VA	NEWPORT NEWS	7	8	9	10	12	17	19	21	21	21	22	21	19	19	18	17	18
VA	NORFOLK	64	67	63	58	51	42	35	27	27	27	22	13	11	11	11	11	12
NC	NEW BERN	1	2	2	4	4	6	6	8	8	8	8	11	12	13	11	11	11
NJ	BARNEGAT LIGHT	5	5	6	6	6	6	9	9	8	8	9	10	10	10	9	9	10
NC	WANCHESE	4	3	2	2	2	1	4	8	7	7	6	6	8	8	7	7	8
NJ	POINT PLEASANT	3	3	2	2	2	2	3	3	3	3	3	3	3	3	5	7	8
NC	LOWLAND	6	6	7	6	6	8	7	7	7	8	8	7	7	8	7	7	7
VA	SEAFORD	1	1						2	3	4	4	5	6	5	5	6	7
MA	BOSTON	43	39	29	23	18	13	12	12	11	10	7	7	7	7	6	5	6
CT	NEW LONDON						1	1	1	1	1	1	3	5	5	5	5	5
VA	HAMPTON	13	13	10	11	8	7	6	6	6	6	7	4	7	6	7	6	5
CT	STONINGTON							1	4	6	7	7	4	4	5	4	4	4
MA	FAIRHAVEN	8	8	7	7	11	10	13	10	8	8	7	8	7	5	4	4	4
NC	BEAUFORT	3	3	1											1	2	5	4
PA	PHILADELPHIA	16	14	14	10	9	7	6	5	5	6	6	5	5	5	5	5	4
NJ	ATLANTIC CITY												1	1	2	3	3	3
NY	MONTAUK												1		2	3	3	3
RI	POINT JUDITH			1	1	1	2	2	1	1	2	1	2	3	3	3	2	3
FL	CAPE CANAVERAL	3	4	4	3	3	1	1	2	2	2	2	2	2	2	2	2	2
NC	BAYBORO	1	1	1	3	1	2	2	2	4	3	3	2	3	2	2	2	2
NC	SWAN QUARTER						1	1	2	3	3	3	3	1	1	1	2	2
VA	CARROLLTON	2	3	2	1	2	2	3	2	2	2	2	2	2	2	2	2	2
CT	ESSEX												1	1	1	1	1	1
FL	JACKSONVILLE	1			1	1	1	1	1	1		1	1	1	1	1	1	1
FL	KEY WEST			1	1					1	1	1	1	1	1	1	1	1
MA	BEDFORD	1	1	1	1	1	1	1	1	1	1	1	1	1	1	1	1	1
MA	HYANNIS	8	6	8	4	2	1	1	1	1	1	2	2	2	2	2	1	1
MA	MANOMET													2	1	1	1	1

MA	WESTPORT POINT								1	1	1	1	1	1	1	1	1	1
ME	BASS HARBOR	1	1	1	1	1	1	1	1	2	1	1	1	1	1	1	1	1
ME	OWLS HEAD	1	3	2	2	2	2	3	3	3	2	2	2	2	2	2	1	1
ME	SOUTHWEST HARBOR	4	3	4	3	2	2	2	2	2	2	1	1	1	1	1	1	1
NC	AURORA	2	2	2	2	2	1	1	2	2	3	2	2	2	1	1		1
NC	NEWPORT	1	1	1	1	1	1	1	1	1	1	1	1	1	1	1	1	1
NC	ORIENTAL	2	2	2	2	3	4	3	4	4	6	8	8	11	10	7	4	1
NC	SWANQUARTER	1	1	1	1	1	1	1								1	1	1
NJ	MANAHAWKIN												1	1	1	1	1	1
NJ	OCEAN CITY																1	1
NJ	POINT PLEASANT BEACH													1	1	1	1	1
NJ	WILDWOOD	3	3	2	1	1	1	1	1	1	1	1	1	2	1	1		1
VA	POQUOSON							2	2	1	1	2	2	2	2	2	1	1
VA	SUFFOLK															1	1	1

Table 44. Permitted general category scallop vessels, by homeport, 2005-2009. All ports that had at least 1 GC permit in 2009 are included.

State	Homeport	1994	1995	1996	1997	1998	1999	2000	2001	2002	2003	2004	2005	2006	2007	2008	2009	2010
MA	NEW BEDFORD	90	84	76	91	78	82	93	100	103	106	115	121	117	115	115	73	66
MA	GLOUCESTER	125	127	122	133	128	142	148	160	184	179	185	181	177	197	177	35	36
MA	BOSTON	529	540	455	401	319	273	244	219	206	186	155	133	113	107	94	37	31
RI	POINT JUDITH	42	47	43	52	52	57	56	61	61	68	72	77	81	90	82	31	30
NJ	CAPE MAY	15	15	15	22	20	28	33	33	34	40	55	71	76	83	66	29	27
NJ	BARNEGAT LIGHT	2	6	5	8	10	25	29	41	45	53	58	61	59	61	56	25	25
NJ	ATLANTIC CITY	2	2	2	1	3	6	6	10	12	12	19	29	29	24	22	14	16
NJ	POINT PLEASANT	13	11	11	11	15	16	18	24	26	26	31	36	38	37	33	20	15
MA	CHATHAM	44	40	40	44	44	49	57	63	77	81	74	70	69	72	64	13	12
MA	PROVINCETOWN	13	18	19	16	16	21	19	23	23	25	31	27	18	18	14	13	11
NY	NEW YORK	130	130	118	111	92	86	79	66	64	57	65	61	61	51	48	13	11
MD	OCEAN CITY	3	3	5	6	7	5	6	8	8	12	17	23	26	24	20	9	8
ME	PORTLAND	37	34	35	38	39	51	53	50	50	62	61	61	56	57	46	7	8
NC	NEW BERN	1		1								1	5	6	5	4	9	8

NC	WANCHESE	10	11	9	12	10	14	14	15	18	22	26	32	30	27	25	7	8
NH	SEABROOK	18	16	16	22	19	17	21	24	26	20	20	17	27	25	18	7	8
NY	MONTAUK	22	22	22	23	27	34	39	39	42	48	55	60	58	65	59	9	8
MA	SCITUATE	16	19	19	21	24	31	36	30	32	33	34	29	27	30	27	9	7
NC	SWAN QUARTER								1	3	3	5	8	10	6	3	4	7
NY	SHINNECOCK	10	9	8	8	5	10	14	15	14	15	19	17	14	14	17	8	7
ME	SOUTH BRISTOL	5	5	4	5	8	6	8	8	6	6	10	11	14	12	10	6	6
NC	BELHAVEN	3	3	3	4	4	3	4	4	6	7	10	16	13	11	8	6	6
NH	PORTSMOUTH	13	13	20	25	26	28	35	35	37	35	49	47	47	46	29	6	6
NJ	BELFORD	14	15	15	17	17	21	22	22	22	24	27	26	26	24	24	6	6
PA	PHILADELPHIA	43	42	34	32	31	33	28	32	32	28	25	19	18	16	15	6	6
NC	BEAUFORT	3	1	4	4	5	6	11	11	11	14	16	17	15	13	13	7	5
NH	HAMPTON	16	17	14	14	13	14	13	18	20	18	23	22	17	18	16	5	5
NJ	WEST CREEK		1	1	1	1								1	1			5
MD	TILGHMAN											5	11	10	8	6	4	4
NC	ENGELHARD				1	2	3	4	5	4	5	9	13	10	9	7	5	4
NH	RYE	6	7	9	9	9	9	8	9	12	15	19	20	20	23	21	5	4
MA	EASTHAM	2	2	2	1	2	1	2	2	4	3	3	3	2	1			3
MA	MARSHFIELD	7	7	4	13	13	16	19	17	15	17	19	19	18	17	16	2	3
MA	NEWBURYPORT	12	10	14	12	13	13	17	17	22	23	22	21	18	15	14	3	3
MA	ROCKPORT	10	11	13	15	16	17	18	21	29	27	24	21	17	18	15	3	3
MA	SANDWICH	12	13	7	6	11	16	16	15	19	19	22	19	19	16	12	3	3
MA	WOODS HOLE	2	3	3	3	3	3	7	8	8	9	9	5	7	6	7	3	3
NJ	POINT PLEASANT BEACH			1	1	1	1	1	2	3	3	4	4	5	4	5	3	3
NJ	WILDWOOD	8	8	7	8	8	6	9	11	10	9	9	7	8	8	7	4	3
NY	FREEPORT	2	2	1	4	4	4	6	5	7	8	10	12	11	9	7	3	3
NY	GREENPORT	2	4	4	6	7	6	7	6	6	7	7	7	5	5	6	3	3
NY	HAMPTON BAYS	6	7	7	8	9	8	9	9	8	9	6	9	11	10	9	2	3
RI	WAKEFIELD	6	8	7	8	9	9	8	10	9	9	8	7	7	7	7	4	3
CT	NEW LONDON	2	2	3	5	8	7	6	9	9	7	10	9	9	9	8	2	2
CT	STONINGTON	3	3	3	3	4	6	6	7	8	7	11	11	11	10	7	3	2
DE	WILMINGTON	5	5	5	4	4	4	3	3	5	5	5	6	6	4	3	2	2

MA	BRANT ROCK	3	3	4	6	6	9	13	10	10	12	13	12	10	9	8	2	2	
MA	FAIRHAVEN	7	8	5	12	16	16	19	19	22	25	25	27	26	22	16	2	2	
MA	HARWICH	5	5	5	4	5	9	10	11	15	12	15	16	19	15	11	1	2	
MA	MANCHESTER	5	8	5	5	5	5	5	4	5	4	8	6	5	6	6	2	2	
MA	SALISBURY	6	8	8	5	5	6	7	9	12	13	11	10	9	11	8	2	2	
MA	WESTPORT	10	15	9	7	14	12	19	18	18	17	18	17	16	14	11	2	2	
ME	CUNDYS HARBOR	6	7	6	8	6	9	9	9	10	10	9	12	15	15	12	1	2	
ME	FRIENDSHIP		1	2	1	3	2	2	5	7	6	8	13	14	11	10	2	2	
ME	LONG ISLAND		1	1	1	1	3	3	3	3	3	6	4	2	3	6	2	2	
ME	NORTHEAST HARBOR			3	1	1	1		1	3	2	4	3	3	3	4	3	2	
ME	PORT CLYDE	7	8	10	9	11	11	12	13	11	13	15	14	10	5	5	2	2	
ME	SACO	4	5	4	3	4	5	8	6	8	7	7	8	9	5	3	2	2	
ME	STEUBEN	6	7	10	8	8	8	9	10	9	10	8	7	7	8	4	1	2	
ME	YARMOUTH	2	2	1	1	2	2	3	2	2	2	2	3	2	2	1	2	2	
NC	SCRANTON										1	1	2	1	1	1	1	2	
NJ	LITTLE EGG HARBOR																	2	
NJ	PORT NORRIS								2	3	8	15	15	11	11	11	1	2	
RI	NARRAGANSETT	2	4	3	1	4	7	10	10	10	10	9	9	5	6	4	2	2	
VA	GLOUCESTER									1	1	2	2			1	1	2	
VA	NORFOLK	36	34	26	29	20	19	13	18	19	18	17	17	14	11	7	2	2	
CT	OAKDALE																1	1	1
DE	LEWES	1	1	1	1					1	2	5	7	7	7	5	1	1	
FL	CHOKOLOSKEE									1	1	1	1	1	1	1	1	1	
GA	TOWNSEND												1	1	2	2	1	1	
MA	BARNSTABLE	3	3	3	5	6	7	7	8	7	6	6	7	6	7	6	1	1	
MA	EDGARTOWN	2	4	3	5	5	5	4	4	6	6	5	5	4	3	3	1	1	
MA	ESSEX	1							1	1	1	1	1				1	1	
MA	GREEN HARBOR	8	7	7	6	11	11	13	13	11	13	14	15	16	17	16	2	1	
MA	HULL	2	2	5	6	8	12	12	12	13	9	9	8	9	7	7	1	1	
MA	MARBLEHEAD	7	6	5	6	4	6	10	10	11	12	11	12	12	12	11	1	1	
MA	MENEMSHA	2	2	2	3	4	4	4	5	6	6	8	7	10	8	7	1	1	
MA	NANTUCKET	1	2	2	4	4	4	6	7	9	10	10	10	10	6	4	1	1	

MA	NEW BEFORD																		1
MA	PLYMOUTH	10	13	14	20	25	22	21	25	25	28	36	29	25	23	19	1	1	
MA	SALEM	3	3	2	3	1	1	1	3	3	6	4	4	5	6	5	1	1	
MA	SWAMPSCOTT	2	2	2	2	2	2	3	3	4	5	2	4	5	4	3	1	1	
MA	WELLFLEET	5	5	4	7	7	7	4	8	9	7	11	10	7	5	4	2	1	
MD	NANTICOKE											1	1	2	2	2	1	1	
ME	BASS HARBOR	1	3	2		1	1				3	2	1		1	2	2	1	
ME	BUCKS HARBOR	13	16	13	11	11	11	11	12	14	15	16	15	10	14	12	1	1	
ME	CAPE PORPOISE	4	3	3	4	4	7	6	6	7	6	9	8	9	10	9	1	1	
ME	CHEBEAGUE ISLAND		2	2	3			1	1	1	1	1	1	2		1	1	1	
ME	CUSHING	1	2	3			1	1		3	2	3	5	7	4	6	1	1	
ME	CUTLER	8	7	4	3	2	3	3	8	7	5	6	6	5	7	4	2	1	
ME	ELIOT				2	1	1	1					1	3	4	4	1	1	
ME	HARRINGTON	2	4	3	2	1	3	3	4	4	3	2	4	2	1	1	1	1	
ME	JONESPORT	9	15	17	15	13	17	24	27	27	28	28	29	31	27	18	1	1	
ME	KENNEBUNKPORT	4	4	1	2	1	3	3	4	3	2	2	4	2	2	3	1	1	
ME	KITTERY	4	5	2	6	9	11	11	10	10	11	11	11	10	11	7	1	1	
ME	MOUNT DESERT			1	2	2	1	1	1										1
ME	OWLS HEAD	2	2	2	1	2	2	4	8	7	12	11	8	10	9	9	1	1	
ME	SEBASCO ESTATES	8	9	8	7	4	6	5	3	3	3	3	4	4	4	4	1	1	
ME	SOUTH THOMASTON						1	2	2	1	3	4	4	2	2	2	1	1	
ME	SPRUCE HEAD	9	9	7	5	7	7	7	8	8	8	9	9	8	7	6	1	1	
ME	STONINGTON	9	8	21	10	13	16	19	16	18	18	25	32	24	16	13	2	1	
ME	TRESCOTT					1	1	1	1	1	1	1	1	1	1	1	1	1	
ME	WEST ROCKPORT																		1
ME	WINTER HARBOR	4	7	6	4	5	6	9	9	12	12	17	17	14	14	13	1	1	
ME	YORK	2	4	3	4	2	3	4	3	4	2	2	3	4	4	1	1	1	
ME	YORK HARBOR	2	1		1	3	4	3	3	2	2	3	3	2	2	1	1	1	
NC	BATH						1	1	1	1	1	4	3	1	1	2	1	1	
NC	CHOCOWINITY																		1
NC	ENGLEHARD										1	1	1	1					1
NC	HOBUCKEN								1		3	1	1	1	1	1	1		1

NC	KITTY HAWK					1		1	1	1							1	1
NC	MANNS HARBOR	1	1	1	1	1	1	1	1	1	1	1	1	1	1	1	1	1
NC	MARSHALLBERG	1	1									1	1	1	3	3	1	1
NC	MOREHEAD	1	1		1	1			1	1	1	1	1	1	1	1	1	1
NC	ORIENTAL					2	3	3	2	4	4	10	9	11	9	7	1	1
NC	SHALLOTTE										1	1	1	2	2	2	2	1
NC	SWAN QUARTER							1	1	1	1	1	1	1	1	1	1	1
NC	SWANQUARTER	1	1	1	1	1	1	1	1	1	1	1	1	1	1	1	1	1
NE	ROCKLAND										1	1	1	1	1	1	1	1
NH	HAMPTON FALLS		1	2	3	4	4	3	4	3	3	2	2	2	2	2	1	1
NJ	BARNEGATE LIGHT		1	1	1	1	1	1	1	1	1	1	1	1	1	1	1	1
NJ	BELMAR	1	1	3	1	3	4	3	4	3	4	5	6	5	5	6	1	1
NJ	CAPE MAY COURT HOUSE									1	1	1	1	1	1	1	1	1
NJ	MANAHAWKIN								2	1	1	1						1
NJ	MILLVILLE				1						2	1	3	3	4	3	2	1
NJ	NEPTUNE	2	2	2	2	1	1	1	1	1	2	2	2	3	3	3	1	1
NJ	TOMS RIVER	1	2					1	1	1	1	1		1	1	1	1	1
NY	AQUEBOGUE							1	1		1	1	1	1			1	1
NY	ISLIP	1	1	1	1	1	1	1	2	2	2	5	4	3	3	3	1	1
NY	POINT LOOKOUT	4	4	2	3	4	3	2	3	2	3	4	4	4	3	2	1	1
NY	SOUTHAMPTON					1	1	1	1	1	1	1	2	1	1	1	1	1
PA	PHILIDELPHIA	1								1	1	1	1	1	1	1	1	1
RI	GALILEE	3	3	2	2	4	4	5	6	5	2	3	4	4	4	3	1	1
RI	NARRAGASETT							1	1	1	1	1	1	1	1	1	1	1
RI	NEWPORT	5	5	5	7	6	9	17	24	25	25	29	31	29	27	23	5	1
VA	BEAUFORT							1	1	1	1	1	1	1	1	1	1	1
VA	NEWPORT NEWS			1	1	3	1	1		1	1	2	8	5	6	5	1	1
VA	TANGIER ISLAND						1	1	1	1	1	1	1	1	1	1	1	1

Table 45. Average GRT (gross registered tons), average length, and number of permitted scallop vessels by top 20 homeports, 1994-2008.

State	Homeport	plan		1994	1995	1996	1997	1998	1999	2000	2001	2002	2003	2004	2005	2006	2007	2008	2009	2010
NJ	ATLANTIC CITY	LA	Average of LEN												75	75	73	75	75	75
NJ	ATLANTIC CITY	LA	Average of GTONS												125	117	123	123	123	123
NJ	ATLANTIC CITY	LA	Count of permit												1	1	2	3	3	3
NJ	ATLANTIC CITY	GC	Average of LEN	55	55	55	35	48	47	47	70	78	76	71	79	82	81	84	94	85
NJ	ATLANTIC CITY	GC	Average of GTONS	71	71	71	5	40	48	48	91	134	127	108	113	123	121	128	146	129
NJ	ATLANTIC CITY	GC	Count of permit	2	2	2	1	3	6	6	10	12	12	19	29	29	24	22	14	16
NJ	BARNEGAT LIGHT	LA	Average of LEN	70	70	69	69	69	69	64	64	68	68	69	68	68	68	69	69	68
NJ	BARNEGAT LIGHT	LA	Average of GTONS	110	110	110	110	110	110	92	92	103	103	105	101	101	101	103	103	101
NJ	BARNEGAT LIGHT	LA	Count of permit	5	5	6	6	6	6	9	9	8	8	9	10	10	10	9	9	10
NJ	BARNEGAT LIGHT	GC	Average of LEN	67	55	51	65	62	53	52	52	51	53	52	48	49	48	48	54	54
NJ	BARNEGAT LIGHT	GC	Average of GTONS	66	58	44	79	78	54	51	57	54	54	47	36	38	36	37	51	48
NJ	BARNEGAT LIGHT	GC	Count of permit	2	6	5	8	10	25	29	41	45	53	58	61	59	61	56	25	25
NC	BEAUFORT	LA	Average of LEN	73	73	67											96	94	84	89
NC	BEAUFORT	LA	Average of GTONS	91	91	106											144	146	124	127
NC	BEAUFORT	LA	Count of permit	3	3	1											1	2	5	4
NC	BEAUFORT	GC	Average of LEN	72	68	73	73	72	73	72	72	72	72	71	69	68	74	75	70	71
NC	BEAUFORT	GC	Average of GTONS	99	83	96	96	96	107	108	108	108	109	104	97	99	114	122	108	109
NC	BEAUFORT	GC	Count of permit	3	1	4	4	5	6	11	11	11	14	16	17	15	13	13	7	5
MA	BOSTON	LA	Average of LEN	80	83	82	84	84	87	90	88	89	91	91	91	91	91	92	93	91
MA	BOSTON	LA	Average of GTONS	145	156	158	161	166	173	176	166	175	181	183	183	183	183	185	195	186
MA	BOSTON	LA	Count of permit	43	39	29	23	18	13	12	12	11	10	7	7	7	7	6	5	6
MA	BOSTON	GC	Average of LEN	48	48	48	49	48	48	49	49	50	51	48	49	50	49	51	64	65
MA	BOSTON	GC	Average of GTONS	47	47	47	49	47	46	49	50	52	55	49	53	56	56	62	97	100
MA	BOSTON	GC	Count of permit	529	540	455	401	319	273	244	219	206	186	155	133	113	107	94	37	31
NJ	CAPE MAY	LA	Average of LEN	83	83	83	82	82	80	79	79	78	73	73	74	75	75	77	77	77
NJ	CAPE MAY	LA	Average of GTONS	157	157	159	155	153	145	142	144	140	130	128	128	129	129	133	131	132
NJ	CAPE MAY	LA	Count of permit	22	23	24	25	26	28	33	36	42	50	52	67	66	70	66	66	66
NJ	CAPE MAY	GC	Average of LEN	68	71	72	60	69	64	61	57	58	51	54	50	54	56	54	59	53
NJ	CAPE MAY	GC	Average of GTONS	125	136	143	104	123	103	93	75	76	61	62	53	63	69	64	75	63

NJ	CAPE MAY	GC	Count of permit	15	15	15	22	20	28	33	33	34	40	55	71	76	83	66	29	27
MA	FAIRHAVEN	LA	Average of LEN	83	83	83	85	87	89	88	88	85	84	88	86	86	91	95	95	95
MA	FAIRHAVEN	LA	Average of GTONS	152	152	150	159	159	167	170	163	154	153	164	159	156	170	183	183	183
MA	FAIRHAVEN	LA	Count of permit	8	8	7	7	11	10	13	10	8	8	7	8	7	5	4	4	4
MA	FAIRHAVEN	GC	Average of LEN	39	39	40	39	36	39	44	44	44	44	45	43	44	43	44	52	52
MA	FAIRHAVEN	GC	Average of GTONS	19	18	23	23	18	20	32	37	35	35	37	30	30	25	25	72	72
MA	FAIRHAVEN	GC	Count of permit	7	8	5	12	16	16	19	19	22	25	25	27	26	22	16	2	2
VA	HAMPTON	LA	Average of LEN	78	78	78	77	77	76	77	77	77	76	76	76	75	66	62	73	79
VA	HAMPTON	LA	Average of GTONS	153	153	158	152	154	152	162	162	162	160	158	144	124	100	89	112	129
VA	HAMPTON	LA	Count of permit	13	13	10	11	8	7	6	6	6	6	7	4	7	6	7	6	5
VA	HAMPTON	GC	Average of LEN	67			42	62	62	39	46	39	62		73	73	60	60		
VA	HAMPTON	GC	Average of GTONS	97			17	61	61	25	44	25	61		114	116	83	83		
VA	HAMPTON	GC	Count of permit	1			1	1	1	3	4	3	1		3	4	2	2		
NC	LOWLAND	LA	Average of LEN	73	73	73	73	73	74	73	73	73	72	76	78	79	80	81	81	81
NC	LOWLAND	LA	Average of GTONS	92	92	97	92	92	107	106	106	106	102	107	113	117	116	118	118	118
NC	LOWLAND	LA	Count of permit	6	6	7	6	6	8	7	7	7	8	8	7	7	8	7	7	7
NC	LOWLAND	GC	Average of LEN	63	66	66	66	66	66	66	66	66	62	73	68	69	69	70		
NC	LOWLAND	GC	Average of GTONS	58	73	73	73	73	73	73	73	73	73	103	92	92	92	94		
NC	LOWLAND	GC	Count of permit	3	2	2	2	2	2	2	2	2	2	5	6	7	7	6		
NY	MONTAUK	LA	Average of LEN												61		71	68	68	72
NY	MONTAUK	LA	Average of GTONS												69		88	82	82	94
NY	MONTAUK	LA	Count of permit												1		2	3	3	3
NY	MONTAUK	GC	Average of LEN	54	52	49	48	53	51	50	51	50	49	50	48	49	48	48	57	57
NY	MONTAUK	GC	Average of GTONS	56	51	47	43	58	54	50	52	49	47	44	42	42	42	42	65	69
NY	MONTAUK	GC	Count of permit	22	22	22	23	27	34	39	39	42	48	55	60	58	65	59	9	8
MA	NEW BEDFORD	LA	Average of LEN	88	89	88	88	88	87	86	85	84	85	85	82	82	83	84	84	84
MA	NEW BEDFORD	LA	Average of GTONS	176	177	177	176	176	175	172	168	162	164	163	154	154	156	158	159	158
MA	NEW BEDFORD	LA	Count of permit	70	67	63	61	63	71	75	90	96	101	110	124	130	131	127	133	133
MA	NEW BEDFORD	GC	Average of LEN	65	67	69	68	66	66	66	65	64	63	62	59	58	58	59	65	63
MA	NEW BEDFORD	GC	Average of GTONS	98	103	108	108	101	101	100	97	98	96	95	89	89	88	93	108	106
MA	NEW BEDFORD	GC	Count of permit	90	84	76	91	78	82	93	100	103	106	115	121	117	115	115	73	66
NC	NEW BERN	LA	Average of LEN	84	73	71	73	73	75	77	75	77	79	79	83	75	72	81	82	82

NC	NEW BERN	LA	Average of GTONS	198	89	89	94	94	103	115	106	114	113	113	119	113	104	122	121	119
NC	NEW BERN	LA	Count of permit	1	2	2	4	4	6	6	8	8	8	8	11	12	13	11	11	11
NC	NEW BERN	GC	Average of LEN	75		75								43	69	60	65	77	62	55
NC	NEW BERN	GC	Average of GTONS	81		81								18	98	80	92	114	81	69
NC	NEW BERN	GC	Count of permit	1		1								1	5	6	5	4	9	8
CT	NEW LONDON	LA	Average of LEN						86	86	86	86	86	86	83	81	81	81	81	81
CT	NEW LONDON	LA	Average of GTONS						147	147	147	147	147	147	188	168	168	168	168	168
CT	NEW LONDON	LA	Count of permit						1	1	1	1	1	1	3	5	5	5	5	5
CT	NEW LONDON	GC	Average of LEN	60	60	54	46	43	39	39	47	46	49	48	49	49	54	56	50	50
CT	NEW LONDON	GC	Average of GTONS	93	93	71	48	38	20	20	38	37	38	35	37	37	54	58	30	30
CT	NEW LONDON	GC	Count of permit	2	2	3	5	8	7	6	9	9	7	10	9	9	9	8	2	2
VA	NEWPORT NEWS	LA	Average of LEN	76	78	79	79	79	79	79	78	78	78	79	79	77	78	78	78	78
VA	NEWPORT NEWS	LA	Average of GTONS	136	142	148	148	149	149	148	146	146	145	142	142	140	140	141	142	144
VA	NEWPORT NEWS	LA	Count of permit	7	8	9	10	12	17	19	21	21	21	22	21	19	19	18	17	18
VA	NEWPORT NEWS	GC	Average of LEN			52	50	58	64	64		63	63	52	56	67	64	69	48	48
VA	NEWPORT NEWS	GC	Average of GTONS			42	42	66	88	88		86	86	52	74	101	86	99	33	33
VA	NEWPORT NEWS	GC	Count of permit			1	1	3	1	1		1	1	2	8	5	6	5	1	1
VA	NORFOLK	LA	Average of LEN	77	79	79	78	79	79	78	79	80	80	81	79	80	80	80	80	80
VA	NORFOLK	LA	Average of GTONS	138	138	138	138	136	133	132	133	135	137	140	139	141	141	141	141	138
VA	NORFOLK	LA	Count of permit	64	67	63	58	51	42	35	27	27	27	22	13	11	11	11	11	12
VA	NORFOLK	GC	Average of LEN	63	63	66	69	70	62	58	60	59	57	55	53	51	48	53	86	86
VA	NORFOLK	GC	Average of GTONS	75	76	84	92	92	76	74	74	70	62	57	53	46	39	50	129	129
VA	NORFOLK	GC	Count of permit	36	34	26	29	20	19	13	18	19	18	17	17	14	11	7	2	2
PA	PHILADELPHIA	LA	Average of LEN	74	73	74	74	73	77	80	82	82	78	78	79	79	79	79	79	76
PA	PHILADELPHIA	LA	Average of GTONS	124	124	126	122	117	141	153	163	163	152	152	153	153	153	153	153	146
PA	PHILADELPHIA	LA	Count of permit	16	14	14	10	9	7	6	5	5	6	6	5	5	5	5	5	4
PA	PHILADELPHIA	GC	Average of LEN	71	71	69	73	71	70	62	70	72	73	74	76	76	72	74	93	93
PA	PHILADELPHIA	GC	Average of GTONS	100	100	98	113	105	98	73	92	98	99	96	97	98	93	99	130	130
PA	PHILADELPHIA	GC	Count of permit	43	42	34	32	31	33	28	32	32	28	25	19	18	16	15	6	6
RI	POINT JUDITH	LA	Average of LEN			79	79	79	85	85	79	79	72	79	79	78	78	78	77	78
RI	POINT JUDITH	LA	Average of GTONS			157	157	157	176	176	157	157	137	157	159	151	151	151	148	151
RI	POINT JUDITH	LA	Count of permit			1	1	1	2	2	1	1	2	1	2	3	3	3	2	3

RI	POINT JUDITH	GC	Average of LEN	60	58	60	59	59	58	58	57	58	57	56	55	55	54	56	65	63
RI	POINT JUDITH	GC	Average of GTONS	73	71	79	74	73	73	74	70	72	70	67	65	66	65	68	92	87
RI	POINT JUDITH	GC	Count of permit	42	47	43	52	52	57	56	61	61	68	72	77	81	90	82	31	30
NJ	POINT PLEASANT	LA	Average of LEN	71	71	79	79	79	80	83	82	82	82	82	82	82	82	76	71	68
NJ	POINT PLEASANT	LA	Average of GTONS	106	106	135	135	135	135	127	116	116	116	116	116	116	116	106	96	89
NJ	POINT PLEASANT	LA	Count of permit	3	3	2	2	2	2	3	3	3	3	3	3	3	3	5	7	8
NJ	POINT PLEASANT	GC	Average of LEN	43	43	46	50	49	49	43	47	48	52	55	57	58	62	60	69	77
NJ	POINT PLEASANT	GC	Average of GTONS	31	31	35	45	48	41	32	41	41	48	54	58	60	68	66	84	102
NJ	POINT PLEASANT	GC	Count of permit	13	11	11	11	15	16	18	24	26	26	31	36	38	37	33	20	15
VA	SEAFORD	LA	Average of LEN	86	86						83	87	84	84	86	87	87	87	87	84
VA	SEAFORD	LA	Average of GTONS	125	125						141	154	147	147	143	142	145	145	148	143
VA	SEAFORD	LA	Count of permit	1	1						2	3	4	4	5	6	5	5	6	7
VA	SEAFORD	GC	Average of LEN	42	42										50	50	50	50		
VA	SEAFORD	GC	Average of GTONS	6	6										48	48	48	48		
VA	SEAFORD	GC	Count of permit	1	1										1	1	1	1		
CT	STONINGTON	LA	Average of LEN							84	86	82	81	81	77	77	76	80	80	80
CT	STONINGTON	LA	Average of GTONS							193	194	169	168	168	154	154	140	158	158	158
CT	STONINGTON	LA	Count of permit							1	4	6	7	7	4	4	5	4	4	4
CT	STONINGTON	GC	Average of LEN	62	62	62	58	60	55	64	63	60	53	51	53	53	53	51	52	45
CT	STONINGTON	GC	Average of GTONS	80	80	80	67	75	59	88	81	76	51	43	46	46	45	47	62	45
CT	STONINGTON	GC	Count of permit	3	3	3	3	4	6	6	7	8	7	11	11	11	10	7	3	2
NC	WANCHESE	LA	Average of LEN	102	108	123	123	85	80	78	79	78	80	81	81	81	81	82	82	81
NC	WANCHESE	LA	Average of GTONS	150	148	143	143	164	129	136	143	145	151	152	152	151	151	153	156	151
NC	WANCHESE	LA	Count of permit	4	3	2	2	2	1	4	8	7	7	6	6	8	8	7	7	8
NC	WANCHESE	GC	Average of LEN	76	76	75	70	74	68	65	63	59	57	54	54	54	53	58	71	57
NC	WANCHESE	GC	Average of GTONS	122	122	129	107	122	99	91	87	75	67	63	63	63	59	73	103	77
NC	WANCHESE	GC	Count of permit	10	11	9	12	10	14	14	15	18	22	26	32	30	27	25	7	8