

BYCATCH CHARACTERIZATION IN THE SOUTHERN NEW ENGLAND SEA SCALLOP FISHERY

Laura Skrobe

FISHERIES SPECIALISTS



Eastern New England Scallop Association

"Working to preserve the New England small boat scallop fishery and fishermen"

Goals & Objectives

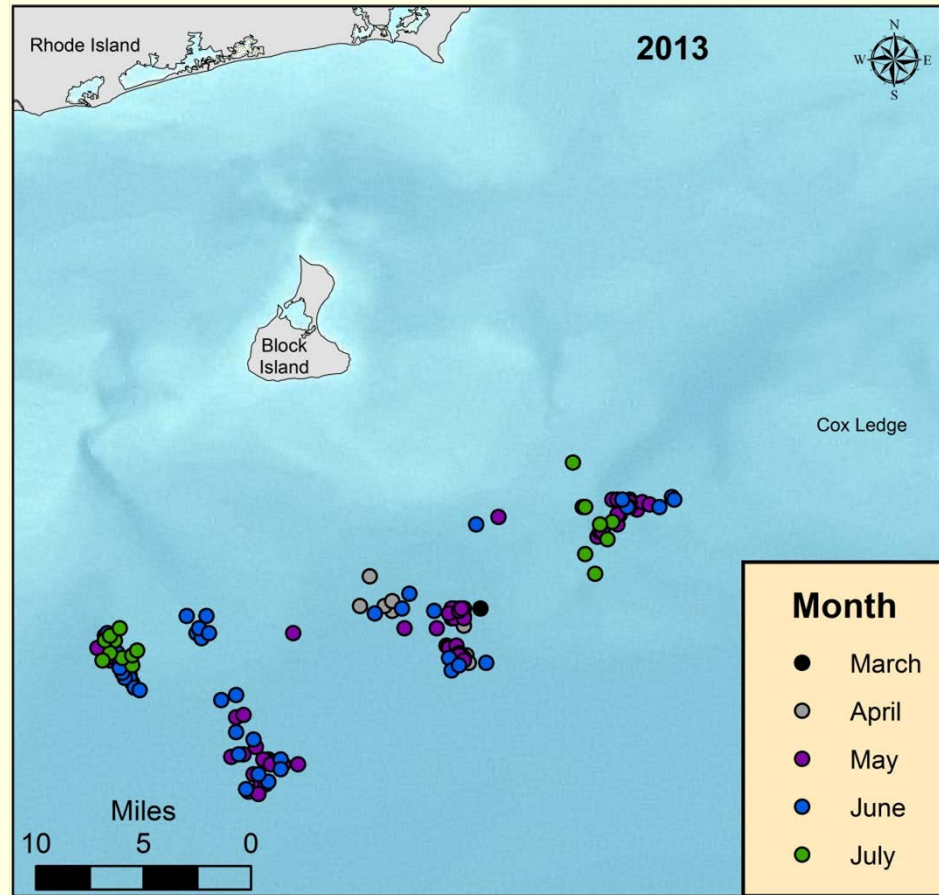
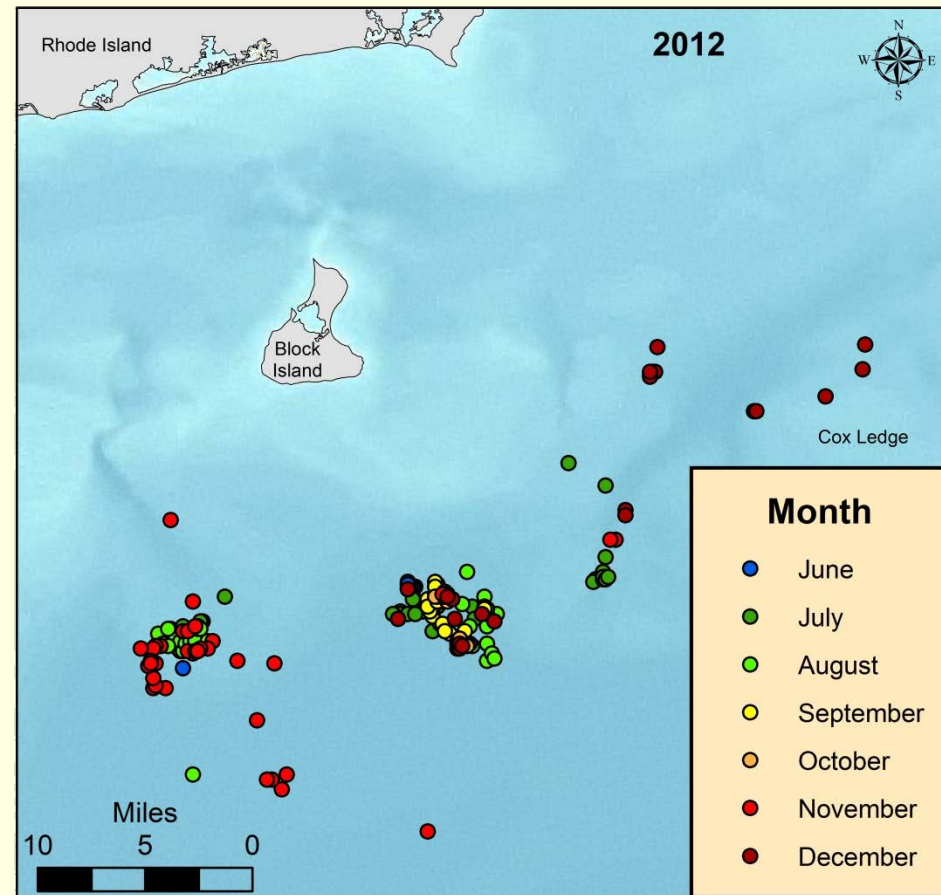
- ▶ Collect information on the bycatch in the Southern New England scallop fishery in order to accurately characterize the fishery
 - Characterize the quantity and composition of yellowtail flounder bycatch, as well as other bycatch species captured, in the SNE LAGC sea scallop fishery
 - Compare catch rates of scallops and bycatch species temporally and spatially to estimate the average bycatch percentages in the SNE fishing area
 - Characterize the SNE sea scallop dredge fishing fleet

Methods

- ▶ Limited Access General Category (LAGC) scallop fishery
- ▶ 5 vessels:
 - 3 out of Point Judith, RI (F/V *Mister G*, F/V *Harvest Moon*, F/V *Brooke C*)
 - 1 out of Montauk, NY (F/V *New Species*)
 - 1 out of Stonington, CT (F/V *Florence*)
- ▶ Sampling from June 2012 to July 2013
- ▶ Total of 361 dredge hauls in 52 trips

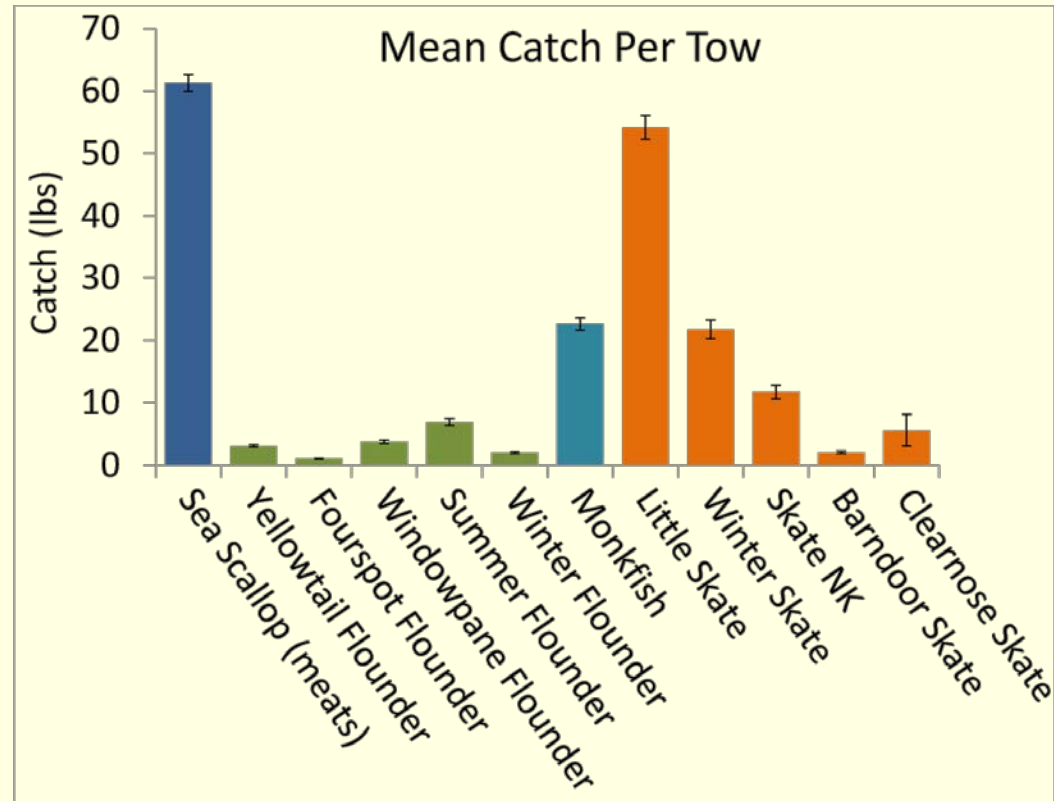


Sampling Locations



Results

Species	N	Mean	Std Error	Min	Max
Sea Scallop (meats)	361	61.3	1.32	0.0	150.9
Yellowtail Flounder	264	3.1	0.18	0.1	20.0
Fourspot Flounder	257	1.0	0.06	0.1	11.9
Windowpane Flounder	216	3.8	0.31	0.1	27.0
Summer Flounder	169	6.9	0.55	0.3	39.0
Winter Flounder	150	2.0	0.18	0.1	22.0
Monkfish	326	22.7	1.01	0.0	93.9
Little Skate	354	54.2	1.89	3.8	236.0
Winter Skate	336	21.8	1.48	0.0	437.0
Skate NK	285	11.7	1.08	0.0	144.0
Barndoor Skate	89	2.0	0.18	0.2	9.0
Clearnose Skate	3	5.6	2.53	1.3	10.0



Results

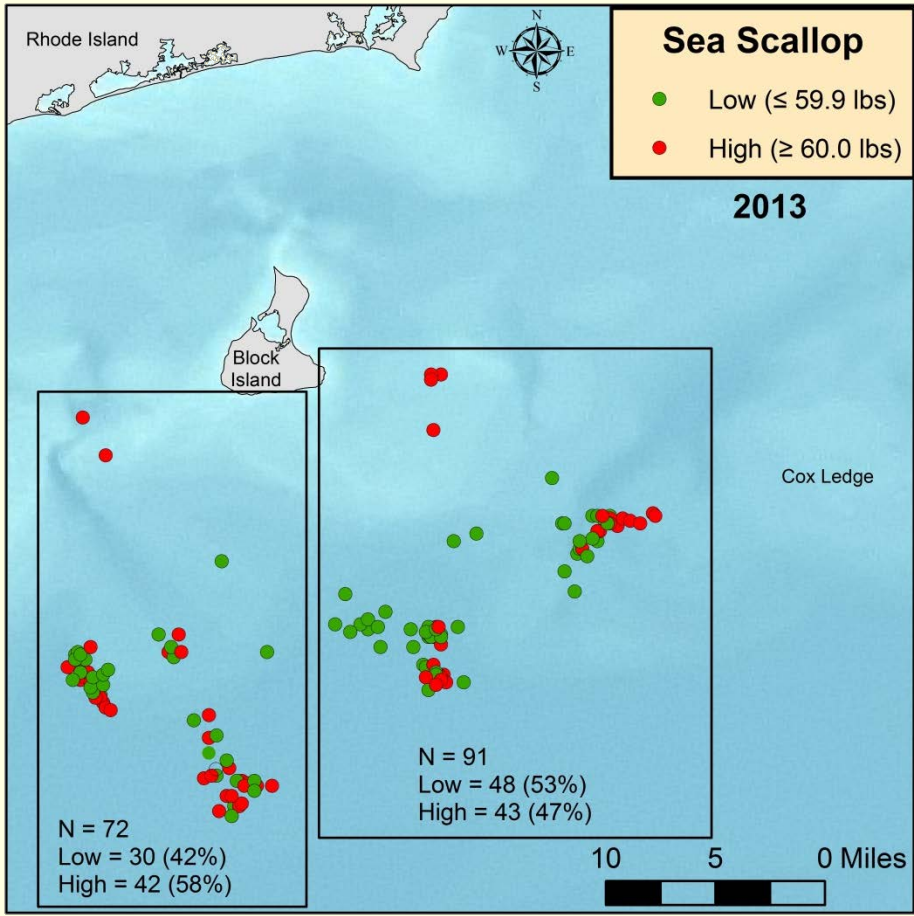
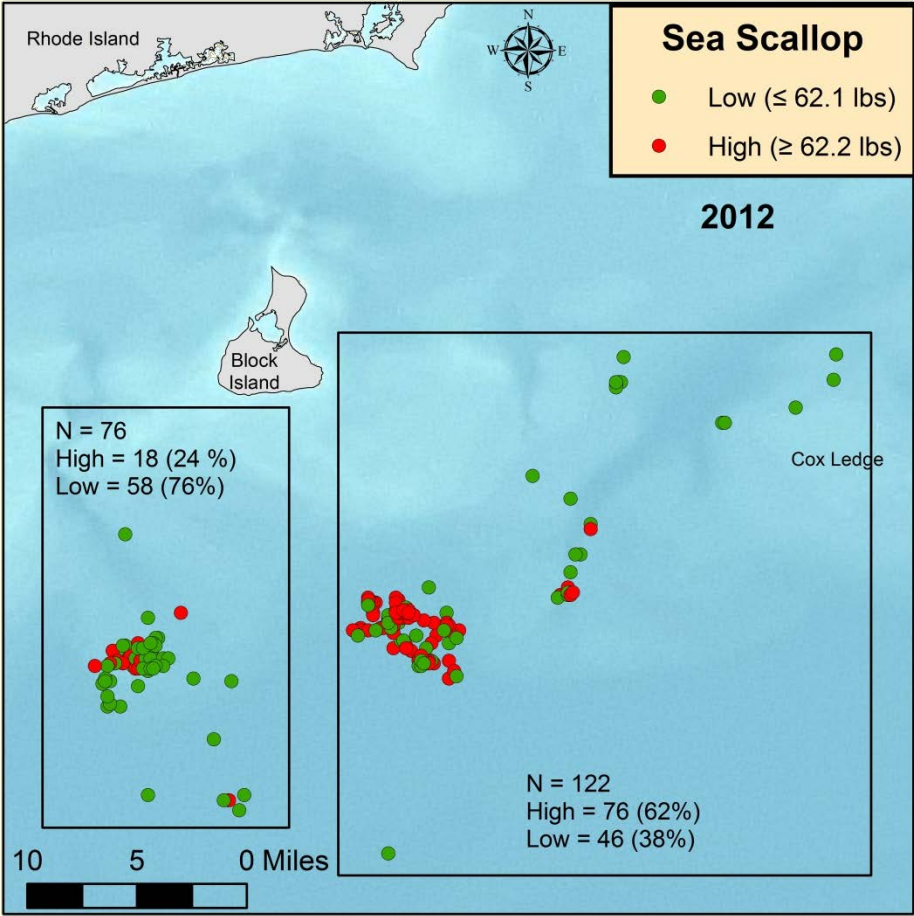
Species Composition

Species	%
Sea Scallop	27.4
Skate	37.4
Flatfish *	4.2
Monkfish	9.1

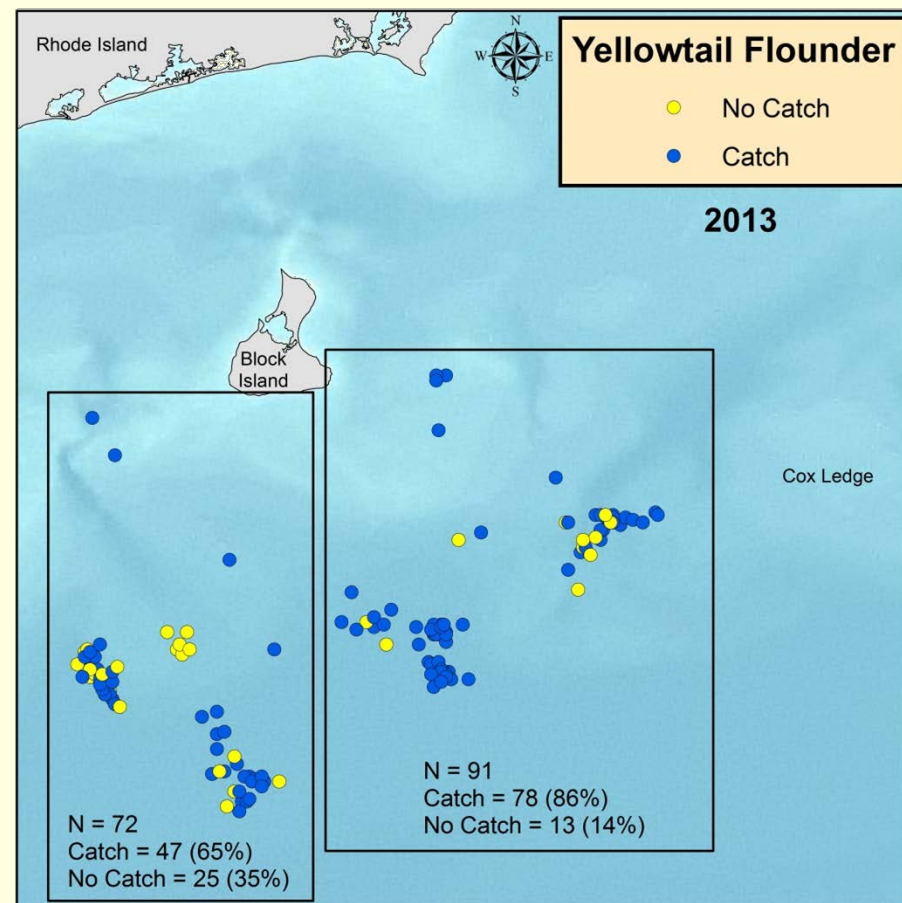
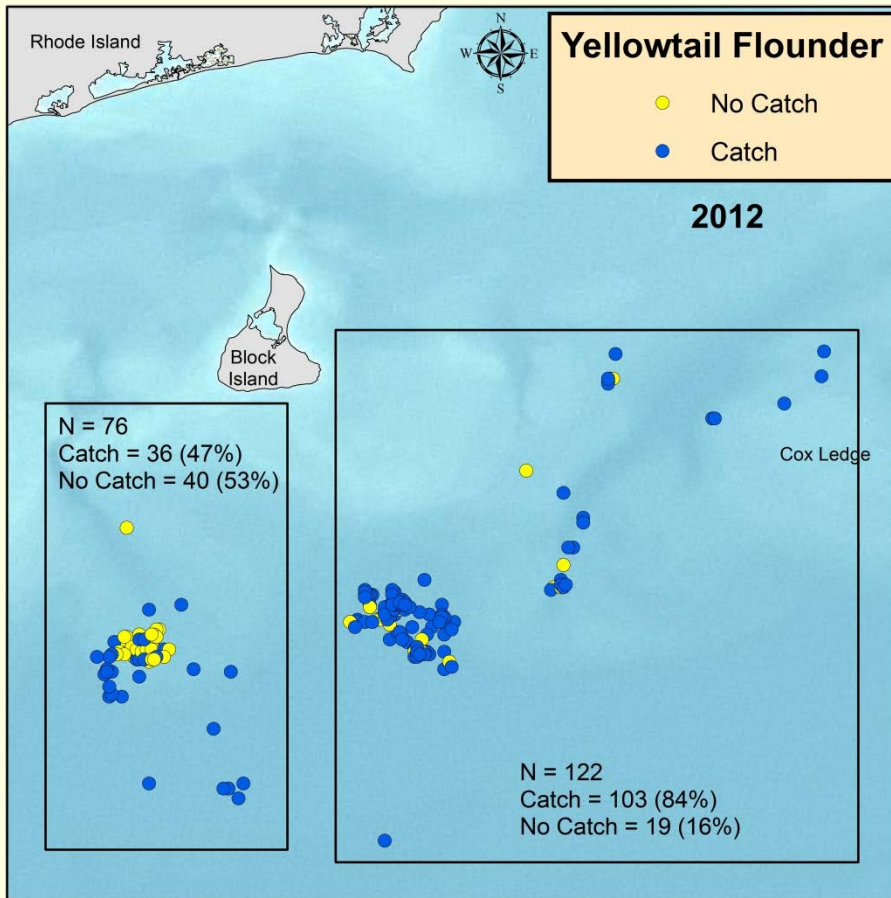


* Includes yellowtail, windowpane, summer, winter

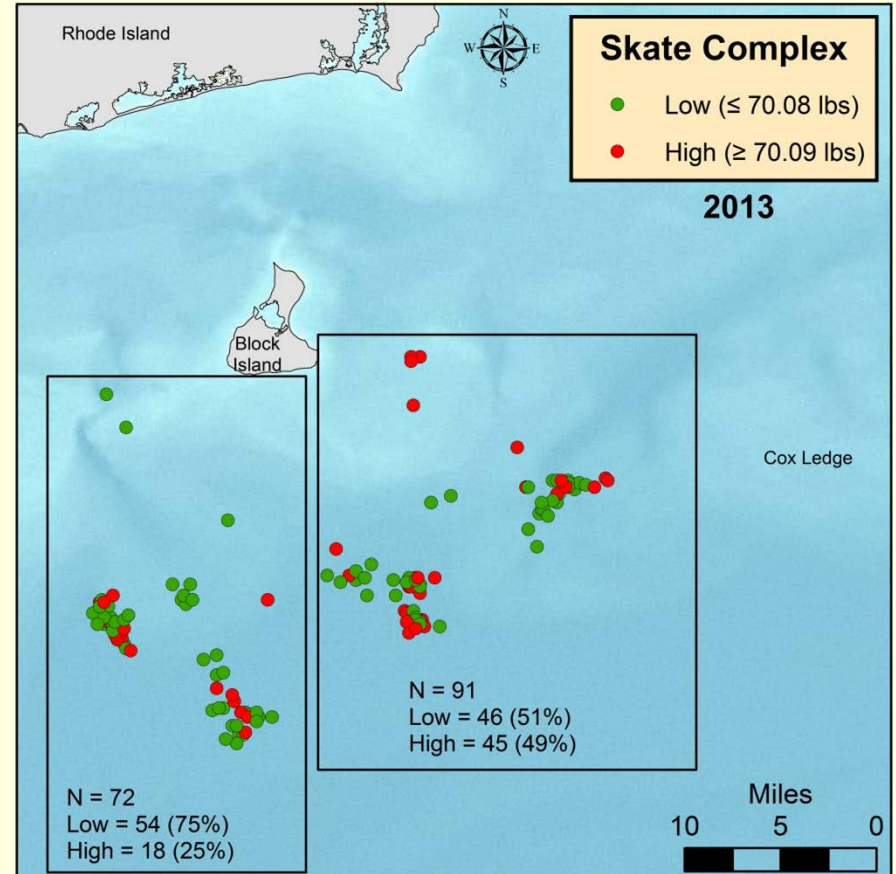
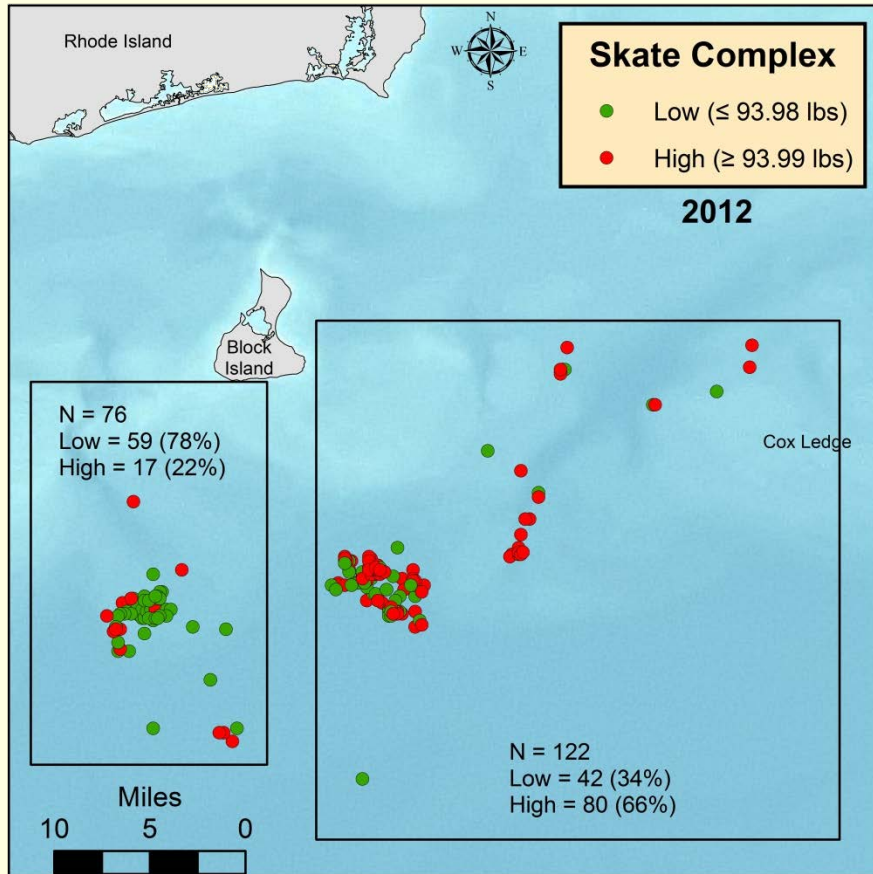
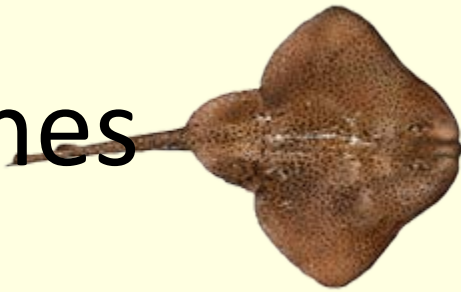
Scallop Catches



Yellowtail Flounder Catches



Skate Catches



Yellowtail Flounder Bycatch Rates

	Month	Bycatch Rate
2012	June	0.037
	July	0.013
	August	0.024
	September	0.011
	October	0.016
	November	0.133
	December	0.241
2013	January	
	February	
	March	0.034
	April	0.077
	May	0.041
	June	0.026
	July	0.007
	Average	0.055



Questions / Comments / Input