



SSC Groundfish Report to NEFMC

Chris Legault
Scientific and Statistical Committee
27 September 2011
Danvers, MA

Request to SSC

- Recommend ABCs
 - 12 analytical assessments not updated since GARM III
 - 3 index assessment stocks
 - 5 stocks updated since GARM III
 - Pollock ABC already set, included for completeness
- SSC Meetings
 - June 2011 guidance to PDT
 - August 2011 guidance to augmented PDT
 - September 2011 set ABCs

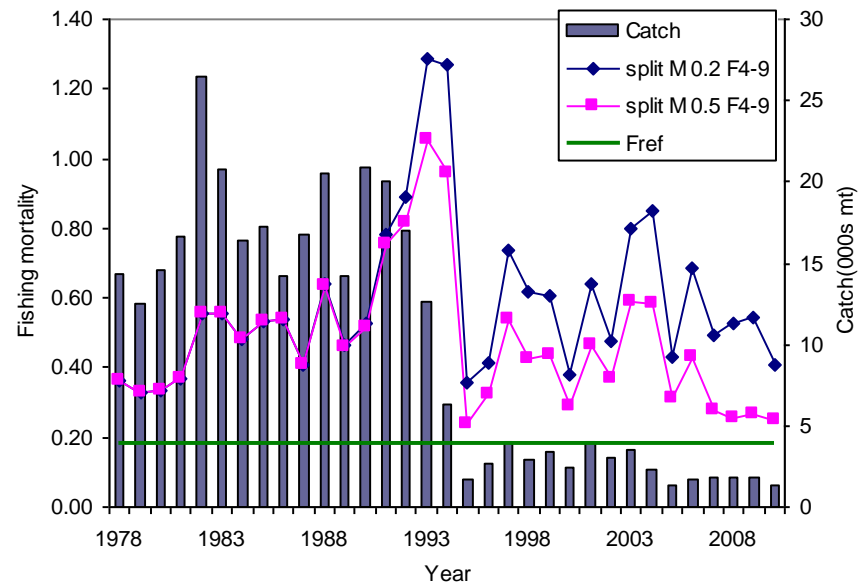
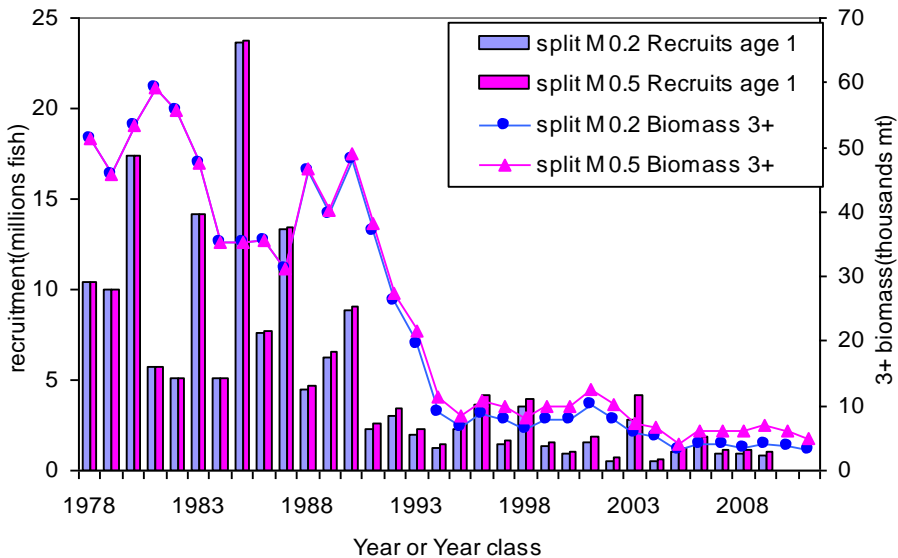
Stocks last assessed at GARM III with analytical assessment

- GOM cod, GB cod, GOM haddock, GB haddock, CC/GOM yellowtail flounder, SNE/MA yellowtail flounder, witch flounder, American plaice, white hake, Acadian redfish, Atlantic halibut, and Atlantic wolffish
- FY12 ABC previously set for Framework 44
 - ABC from 75%Fmsy projections
 - No basis for altering advice, except for GB cod
- Update assessments will provide FY13-14 ABC

Georges Bank Cod



- TRAC assessed Eastern GB cod
 - Poor status, low biomass, poor recruitment
- SSC set FY12 OFL and ABC = FY11 OFL and ABC
 - ABC 5,616 mt instead of 6,214 mt

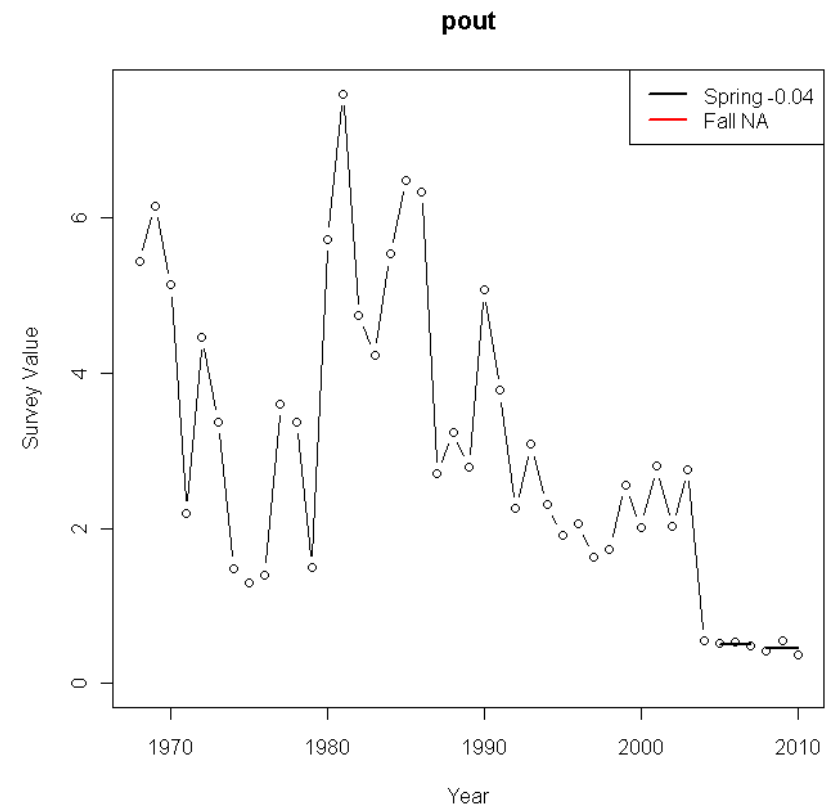


Index-based assessments

- Northern windowpane flounder, southern windowpane flounder, and ocean pout
- Apply F_{msy} and $75\%F_{msy}$ to estimate OFL and ABC, respectively
- Bigelow adds uncertainty
 - Aggregate biomass conversion applied

Ocean Pout

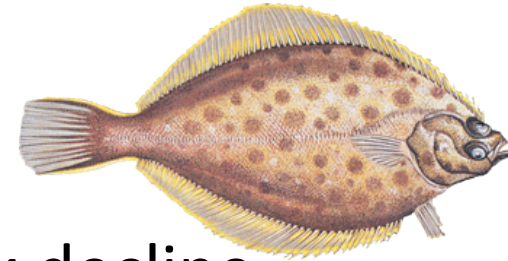
- Possible change in productivity
 - Catches below ABC do not appear to result in rebuilding
- SSC FY12-14 ABC 256 mt



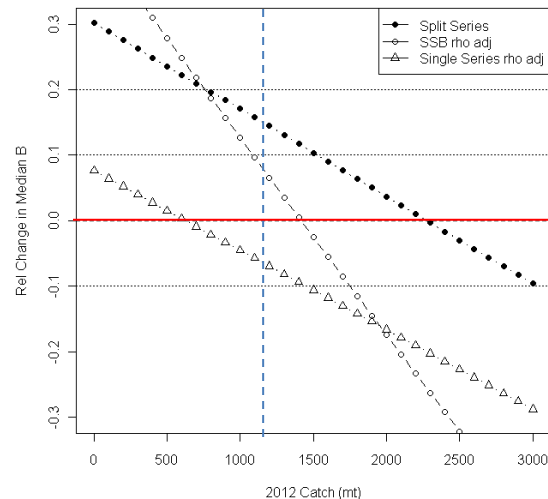
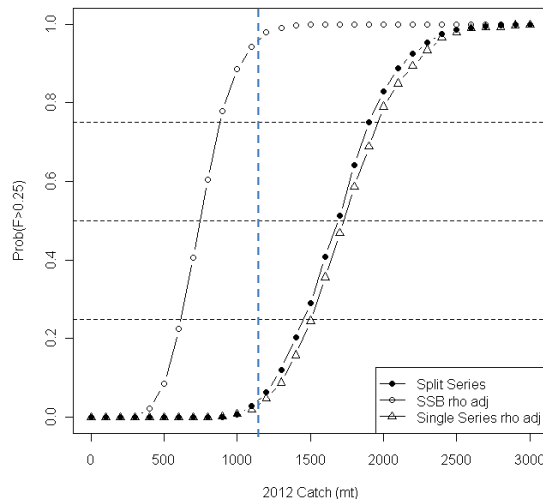
Stocks with recent assessments

- GB yellowtail flounder, GB winter flounder, SNE/MA winter flounder, GOM winter flounder, and pollock
 - GB yellowtail flounder TRAC (June 2011)
 - 3 winter flounder stocks SARC 52 (June 2011)
 - Pollock SARC 50 (June 2010)
- Standard projection approaches for OFL and ABC, except GOM winter flounder

Georges Bank yellowtail flounder



- SSC 2012 ABC 1,150 mt
 - Balances risk of overfishing with stock decline
 - TRAC catch advice 900-1,400 mt
 - TMGC negotiated quota 900 mt
 - PDT 2 rebuilding scenarios 1,303 mt and 1,445 mt



Gulf of Maine winter flounder

- No analytical assessment accepted in SARC
- Stock B estimated from survey using q from GB winter flounder assessment
- Fmsy proxy from length-based YPR
- SSC FY12-14 ABC 1,078 mt

Given the uncertainties in this assessment method and sensitivity of the estimates with small changes in the assumed gear efficiency, it may be advisable to select a more moderate catch.



SSC OFL and ABC Recommendations

Stock	2010	2012		2013		2014		
	Catch	OFL	ABC	OFL	ABC	OFL	ABC	
GB cod	3,903	7,311	5,616	N/A	N/A	N/A	N/A	Group 1
GOM cod	9,325	11,742	9,018	N/A	N/A	N/A	N/A	
GB haddock	25,900	51,150	39,846	N/A	N/A	N/A	N/A	
GOM haddock	1,370	1,296	1,013	N/A	N/A	N/A	N/A	
GB yellowtail flounder	1,160	1,691	1,150	2,136	1,150	N/A	N/A	Group 3
SNE/MA yellowtail flounder	242	3,166	1,003	N/A	N/A	N/A	N/A	
CC/GOM yellowtail flounder	633	1,508	1,159	N/A	N/A	N/A	N/A	
Plaice	1,777	4,727	3,632	N/A	N/A	N/A	N/A	
Witch flounder	849	2,141	1,639	N/A	N/A	N/A	N/A	Group 2
GB winter flounder	1,544	4,839	3,753	4,819	3,750	4,626	3,598	
GOM winter flounder	195	1,458	1,078	1,458	1,078	1,458	1,078	
SNE/MA winter flounder	363	2,336	626	2,637	697	3,471	912	
Redfish	1,852	12,036	9,224	N/A	N/A	N/A	N/A	Group 1
White hake	2,219	5,306	3,638	N/A	N/A	N/A	N/A	
Pollock	6,161	19,887	15,400	20,060	15,600	20,554	16,000	
N windowpane	236	230	173	230	173	230	173	
S windowpane	564	515	386	515	386	515	386	Group 2
Ocean pout	127	342	256	342	256	342	256	
Atlantic halibut	62	143	85	N/A	N/A	N/A	N/A	
Atlantic wolffish	17	92	83	N/A	N/A	N/A	N/A	

Compare 2010 Catch and 2012 ABC

